

RMCD - LIGHT - Components



Item number:
STR-RMCD-Light

Created on 25.02.2025

Description

RMCD Light

For control of:

- Speed
- Color printing
- Recording of marking work

Features:

- Color display



Inductive sensor INI marking IFM204

Item number: BPL-4000440

suitable for RMCD-Light



Screen M835-01

Item number: BPL-4001905

The DSEM835 is a 3.5-inch programmable display designed for use in vehicles and off-highway machinery. The DSEM835 offers the user excellent flexibility. The DSEM835 is configured with CODESYS 3.5. suitable for RMCD-Light



RMCD pressure sensor HP - Airless

Item number: BPL-4001945

Electronic pressure sensor; 0...250 bar; 0...3625 psi;
1/4" external thread
rAnalog signal; 4...20 mA



RMCD encoder

Item number: BPL-4001946

Dimension:
Diameter 36,5mm / L = 76mm
without pickup wheel

Spare parts



Wiring harness for RMCD Light

Item number: BPL-4002189

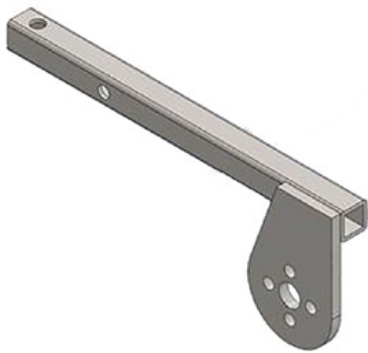
- Connection to display M835-01
- Connection to INI marker
- Connection to pressure sensor
- Connection to rotary encoder
- Connection to power supply



RMCD pressure sensor LP - Airspray

Item number: BPL-4002205

Electronic pressure sensor; 0...10 bar
1/4" external thread



Bracket for encoder for RMCD

Item number: CMC-AR30P-MAX-A3-007

for RMCD



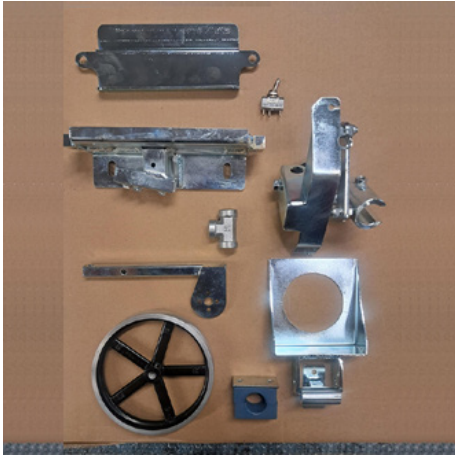
Pickup wheel for encoder

Item number: CMC-SU00031

For recording the speed of your machine.

Inner diameter of mount: 10 mm

Accessories/Extensions



Conversion KIT RMCD Light to marking machine

Item number: CMC-KIT00087

Suitable for RMCD Light
