

# Overview



Road marking machines



Airless painter pumps



Solutions for demarking



Foil laying technology



Marking technology



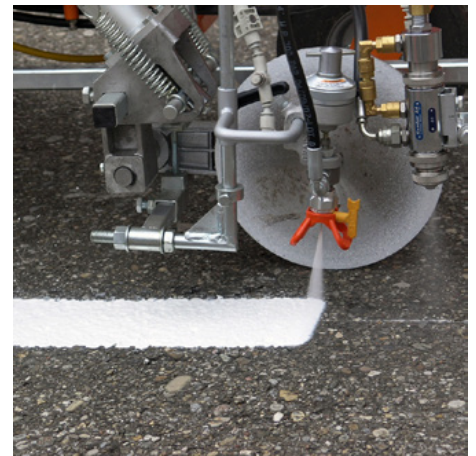
Marking accessories



Road drying units



LongLife floor marking films



Marking colors

# Overview



AsphaltArt marking films



Marker buttons



Construction site protection



Photovoltaic LED



Lane markings Visibility signs



Leitschwellen



Flexiposten



Flexible Verkehrspoller



Workshop and warehouse

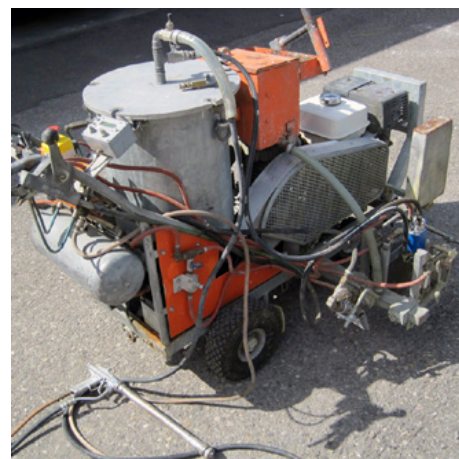
## Overview



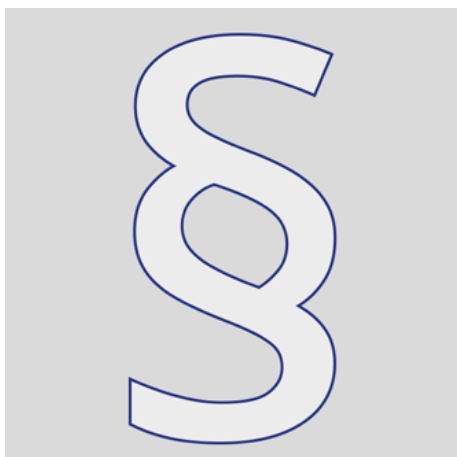
Safety clothing



Safety shoes



Used marking technology



Additional information

## Road marking machines



Airless machines



Airspray machines



Cold plastic machines



Drive trolley



## Airless machines



Hand-guided airless machines



Airless machines with hydraulic drive



Airless ride-on machines



Airless machines for the platform body



# Hand-guided airless machines



## CMC AR 30 Pro-CMPR-MAXX - Airless road marking machine with piston pump 6,17 L/min and compressor

Professional road marking machine for small and medium size jobs in the professional or municipal field! Equipped with a piston pump, compressor and RMCD automatic dash / gap.  
Ideal in combination with a HMC drive trolley.

CMC-AR30PROP-CMPR  
210 kg  
1 Stk.  
155 x 77 x 128 cm



## CMC AR 30 Pro-2C - Airless road marking machine with 2 diaphragm pumps 5,9 L/min and Hondamotor

Hand-held road marking machine with 2 colors. To mark wide lines with one color or to mark two lines with different colors at once. Also ideal for 1:1 spray plastic (note the special 1:1 gun).

CMC-MTLAR30PRO2C-H  
150 kg  
1 Stk.  
160 x 68 x 105 cm



## CMC AR 30 Pro-H - Airless road marking machine with diaphragm pump 5,9 L/min with Honda engine

Simple, light and uncomplicated hand-held road marking machine for small markings in the professional or municipal sector! Equipped with a diaphragm pump.

CMC-MTLAR30PRO-H  
110 kg  
1 Stk.  
162 x 65 x 100 cm



## CMC AR 30 ProP-2C - Airless road marking machine with 2 piston pumps 6.17 l/min

Hand-held road marking machine with 2 colors. To mark wide lines with one color or to mark two lines with different colors at once.  
With C8000 control unit or RMCD-Road Marking Control Device.

CMC-MTLAR30PRO-P-2C  
362 kg  
1 Stk.  
150 x 79 x 125 cm



## AR 30 Pro P - AVH - Battery operated airless floor marking machine

Simple, lightweight and uncomplicated hand-held (electric) road marking machine for emission-free indoor markings!

CMC-MTLAR30PROP-AVH  
162 kg  
1 Stk.  
162 x 65 x 100 cm



## CMC AR 30 Pro-P-G H - Inverted airless road marking machine with piston pump 6,17 L/min and Honda engine

Specially designed road marking machine for marking tight radii. The short wheelbase and special design with two wheels at the front and one steerable wheel at the rear make it the ideal machine for marking tight radii.

CMC-MTLAR30PROPG-H  
110 kg  
1 Stk.  
130 x 65 x 100 cm



## CMC AR 30 PROP-H - Airless road marking machine with piston pump 6,17 L/min and Honda engine

Simple, light and uncomplicated hand-guided road marking machine for small markings in the professional or municipal field! Equipped with a piston pump with hydraulic drive.

CMC-MTLAR30PRO-P-H  
142 kg  
1 Stk.  
155 x 75 x 101 cm



## Hand-guided airless machines



### CMC AR 30 PROP-H - Airless road marking machine with piston pump 6,17 L/min and Honda engine

Simple, light and uncomplicated hand-guided road marking machine for small markings in the professional or municipal field! Equipped with a piston pump with hydraulic drive.

CMC-MTLAR30PROP-H-R  
142 kg  
1 Stk.  
155 x 75 x 101 cm



### CMC AR 30 Pro-P 25 H - Airless line striper with piston pump 8.9 L/Min and Honda engine

Simple, light and uncomplicated hand-guided road marking machine for small markings in the professional or municipal field! Equipped with a powerful piston pump with a liter capacity of 8.9 liters/min.

CMC-MTLRAR30PRO-  
P25H  
160 kg  
1 Stk.  
146 x 64 x 102 cm



# Airless machines with hydraulic drive



## CMC AR100 Volante - Airless road marking machine with hydraulic drive and various configuration options.

Self-propelled airless road marking machine with hydraulic drive. Unique steering system with innovative joy-stick operation.  
2 independent paint systems (2 pumps) and 2 guns.

CMC-MTLAR100-2C  
660 kg  
1 Stk.  
218 x 730 x 153.5 cm



## CMC AR 100 G - Airless road marking machine with hydraulic drive - 2 Wheels in front

Self-propelled airless road marking machine with hydraulic drive. Ideal for marking municipalities and cities or even larger parking lots. The machine can also be equipped with spray plastic systems. Two wheels in front, one steerable rear wheel.

CMC-MTLAR100-G  
540 kg  
1 Stk.  
185 x 75 x 160 cm



## CMC AR30ITPP - Airless road marking machine with hydraulic drive and piston pump

Self-propelled airless road marking machine with hydraulic drive. Ideal for marking municipalities and towns or even larger parking lots. The machine can also be equipped with spray plastic systems.

CMC-MTLAR30ITPP  
265 kg  
1 Stk.  
165 x 60 x 105 cm



## CMC AR40ITP-2C - Airless road marking machine with hydraulic drive and 2 diaphragm pumps

Self-propelled airless road marking machine with hydraulic drive. Ideal for marking work in municipalities and cities or larger parking lots. Equipped with two diaphragm pumps. The machine can also be equipped with spray plastic systems.

CMC-MTLAR40ITP-2C  
305 kg  
1 Stk.  
200 x 75 x 120 cm





# Airless ride-on machines



## CMC AR 300 - Road marking machine with different configuration possibilities

Self-propelled airless ride-on machine for work requiring a large paint capacity. The self-propelled ride-on road marking machine can be individually configured. 300 liter paint tank.

CMC-AR 300  
1.300 kg  
1 Stk.  
345 x 110 x 210 cm



## CMC AR 500 - road marking machine with different configuration possibilities

Self-propelled airless ride-on machine. For marking 2 lines or 90 cm lines in just one pass. The road marking machine can be individually configured. 500 liter paint tank.

CMC-AR 500  
1.800 kg  
1 Stk.  
365 x 110 x 210 cm



## CMC AR 180 - Road marking machine with different configuration possibilities

Self-propelled ride-on airless machine for jobs where large paint capacity, high marking performance and stability must be ensured with a compact 4-wheel ride-on machine. 180 liter paint tank.

CMC-AR180  
825 kg  
1 Stk.  
220 x 90 x 185 cm



## AR 300 SN Central-steering Ride-on Airless Road marking machine

Self-propelled ride-on Airspray road marking machine with hydraulic drive. For road marking in urban areas or on rural roads with tight curves. Articulated steering. 300 liter paint tank.

CMC-L 300 SN  
1.300 kg  
1 Stk.  
345 x 110 x 210 cm



## U 10 - Road marking machine configurable for airspray, airless, spray plastic 1:1, spray plastic 98:2; cold plastic

Self-propelled airless ride-on road marking machine for jobs where a very large paint capacity, high marking performance and stability must be guaranteed with a compact 4-wheel ride-on machine. The U10 can be individually configured.

CMC-U10  
1 Stk.  
313 x 125 x 219 cm



## U12 airless road marking machine with airless equipment

Self-propelled airless ride-on road marking machine for jobs where a very large paint capacity, high marking performance and stability must be guaranteed with a compact 4-wheel ride-on machine. The U12 can be individually configured.

CMC-U12-AR-500-EU  
1 Stk.  
369 x 140 x 216 cm



## CMC U13 road marking machine with airless equipment

Self-propelled airless ride-on road marking machine for jobs where a very large paint capacity, high marking performance and stability must be guaranteed with a compact 4-wheel ride-on machine. The U 13 can be individually configured.

CMC-U13-Airless  
1 Stk.  
460 x 128 x 220 cm

## Airless machines for the platform body



### Truck or platform body Airless

The ARK 17 road marking device is equipped with a very powerful piston pump. It can be used for line markings as well as for marking surfaces. Thanks to its compact dimensions, the road marking device fits on any truck, small truck or flatbed trailer.

CMC-ARK 17 Airless  
520 kg  
1 Stk.  
125 x 95 x 165 cm



# Airspray machines



Hand-guided airspray machines



Air spray machines with hydraulic drive



Airspray ride-on machines



## Hand-guided airspray machines



### L 40 Pro Airspray marking machine - hand-held

Hand-held, simple, light and uncomplicated Airspray road marking device for small markings in professional or municipal areas!

CMC-MTL40PRO-H  
150 kg  
1 Stk.  
155 x 65 x 100 cm



# Air spray machines with hydraulic drive

RMCD



## L 120 Airspray Road marking machine with hydraulic drive for wide road markings

Self-propelled Airspray road marking machine with hydraulic drive. For very wide marking activities.

CMC-L120  
490 kg  
1 Stk.  
190 x 80 x 138 cm

RMCD



## L 60 ITP Airspray Road marking machine with hydraulic drive

Self-propelled Airspray road marking machine with hydraulic drive. Ideal for marking municipalities and cities or even larger parking lots.

CMC-L60ITP  
240 kg  
1 Stk.  
200 x 85 x 120 cm

RMCD



## L 90 NST Airspray marking machine with hydraulic drive

Self-propelled Airspray road marking machine with hydraulic drive. Ideal for marking municipalities and towns or even larger parking lots.

CMC-L90-NST  
412 kg  
1 Stk.  
192 x 91 x 120 cm

RMCD



## L 50 ITP EVO H - Airspray marking machine with hydraulic drive

Self-propelled Airspray road marking machine with hydraulic drive. Ideal for marking municipalities and towns or even larger parking lots.

CMC-MTL50ITP-EVO-H  
250 kg  
1 Stk.  
170 x 70 x 105 cm

RMCD



## L 50 ITPPV Airspray Road marking machine with hydraulic drive

Self-propelled Airspray road marking machine with hydraulic drive. Ideal for marking municipalities and cities or even larger parking lots.

CMC-MTL50-NST  
360 kg  
1 Stk.  
170 x 65 x 95 cm



# Airspray ride-on machines

RMCD



## L 150 ride-on airspray marking machine

Self-propelled ride-on airspray road marking machine with hydraulic drive.  
For road markings in urban areas or on rural roads.

CMC-L 150  
825 kg  
1 Stk.  
220 x 90 x 185 cm

RMCD



## L 250 - L 400 Ride-on Airless Road marking machines

Self-propelled ride-on Airspray road marking machine with hydraulic drive.  
For road marking in urban areas or on rural roads.

CMC-L 250 - L 400  
1.300 kg  
1 Stk.  
330 x 110 x 210 cm

RMCD



## L 250 SN Central-steering Ride-on Airless Road marking machine

Self-propelled ride-on Airspray road marking machine with hydraulic drive.  
For road marking in urban areas or on rural roads with tight curves.

CMC-L 250 SN  
1.300 kg  
1 Stk.  
345 x 110 x 210 cm

RMCD



## U13 Airspray

Self-propelled Airspray ride-on road marking machine for jobs where a very large paint capacity, high marking performance and stability must be ensured with a compact 4-wheel ride-on machine. The U 13 can be configured individually.

CMC-U13 Airspray  
1 Stk.



## Cold plastic machines



Cold plastic machines with belt drive



Cold plastic machines with hydraulic drive



Cold plastic ride-on machines



## Cold plastic machines with belt drive



### CMC PM 50 C-ST - Cold-Plastic road marking machine with belt drive - agglomerate markings

Cold plastic road marking machine with belt drive for marking agglomerate markings.  
The ideal machine to mark guardrails and stop bars easily and quickly with a texture marking.

CMC-MTLPM50C-ST-13  
175 kg  
1 Stk.  
120 x 118 x 166 cm





# Cold plastic machines with hydraulic drive

RMCD



## CMC 60 C-ST Cold-Plastic Road marking machine for flat markings, agglomerates and ribs

Self-propelled cold plastic road marking machine. Very productive cold plastic road marking machine. Depending on the equipment, it can perform flat marking, agglomerate (texture marking) or rib marking. Also with RMCD - Road Marking Control Device.

CMC-60 C-ST  
563 kg  
1 Stk.  
200 x 120 x 140 cm



## CMC Universal Cold-Plastic marking machine for flat markings, agglomerates and rib-marking

Self-propelled cold plastic road marking machine. Highly productive marking machine for the application of cold plastic markings. Depending on the equipment, flat lines, agglomerates (textured markings) or ribbed markings can be applied.

CMC-Universal  
270 kg  
1 Stk.  
150 x 98 x 110 cm



# Cold plastic ride-on machines

RMCD



## CMC 250 C-ST Ride-on Cold-Plastic Road marking machine

Self-propelled ride-on cold plastic road marking machine. Very productive ride-on cold plastic road marking machine. Depending on the equipment, it can do flat marking, agglomerates or ribbed marking. Also with RMCD - Road Marking Control Device.

CMC-250 C-ST  
1.300 kg

345 x 110 x 210 cm

RMCD



## CMC 400 C-ST Ride-on Cold-Plastic Road marking machine

Self-propelled ride-on cold plastic road marking machine. Very productive ride-on cold plastic road marking machine. Depending on the equipment, it is possible to carry out flat markings, agglomerates or ribbed markings. Also with RMCD - Road Marking Control Device.

CMC-400 C-ST  
1.300 kg

345 x 110 x 210 cm

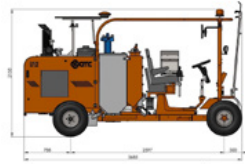


## U10 ride on cold plastic marking machine 250 liter

Self-propelled ride-on cold plastic road marking machine. Very productive ride-on cold plastic road marking machine. Depending on the equipment, it can do flat marking, agglomerates or ribbed marking. Also with RMCD - Road Marking Control Device.

CMC-U10-250-CST

312.5 x 124.5 x 218.5 cm

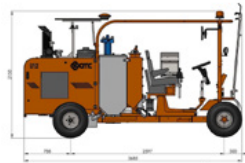


## U12 ride on cold plastic road marking machine 250 liter

Self-propelled ride-on cold plastic road marking machine. Very productive ride-on cold plastic road marking machine. Depending on the equipment, it can do flat marking, agglomerates or ribbed marking. Also with RMCD - Road Marking Control Device.

CMC-U12-250-CST

368 x 140 x 215 cm



## U12 ride on cold plastic road marking machine 250 liter

Self-propelled ride-on cold plastic road marking machine. Very productive ride-on cold plastic road marking machine. Depending on the equipment, it can do flat marking, agglomerates or ribbed marking. Also with RMCD - Road Marking Control Device.

CMC-U12-400-CST

368 x 140 x 215 cm



# Drive trolley



## CMC - HMC drive car with electric drive

Expand your productivity with the HMC electric drive carriage from CMC. This can be coupled behind your hand-held, electric road marking machine.

CMC-HMC-AV

1 Stk.



## CMC - HMC drive carriage with hydraulic drive for road marking machines

Expand your productivity with the HMC hydraulically driven drive carriage from CMC. This can be mounted behind your hand-held road marking machine with a hitch. With Briggs and Stratton engine.

CMC-HMC-B

148 kg

1 Stk.

145 x 70 x 115 cm



## CMC - HMC drive trolley with hydraulic drive for road marking machines with Honda engine.

Expand your productivity with the HMC hydraulically driven drive carriage from CMC. This can be mounted behind your hand-held road marking machine with a clutch. With Honda engine.

CMC-HMC-H

148 kg

1 Stk.

145 x 70 x 115 cm



# Airless painter pumps



## CMC Modell 20000 - Double-Head Airless pump for painters

Pump capacity: 2 x 7 l/min  
Maximum pressure: 250 bar  
Motor: 3 HP electric  
Voltage: 380 V  
Weight: 65 kg

CMC-20000  
65 kg  
1 Stk.



## CMC Model 12000 V

Airless painter pump with vertical diaphragm pump  
Pump capacity: 7,0 l/min  
Maximum pressure: 250 bar  
Motor: 3,0 HP electric  
Voltage: 230 V

CMC-Modell 12000V  
45 kg  
1 Stk.



## CMC Model P20-CB - Airless Sprayer / Painter Pump with Honda Engine

CMC airless sprayer with piston pump P20-CB for all painting jobs.  
Pump capacity: 6.17 l/min  
Maximum pressure: 250 bar  
Engine: 6 HP combustion engine  
Weight: 87 kg

CMC-P20-CB-CH  
87 kg  
1 Stk.



## CMC Model P20-CE - Airless sprayer / painter pump with electric drive

CMC airless sprayer with piston pump P20-CE for all painting jobs.  
Pump capacity: 6.17 l/min  
Maximum pressure: 250 bar  
Motor: 3 HP electric motor 230 volt single-phase  
Weight: 87 kg

CMC-P20-CE  
87 kg  
1 Stk.



## Solutions for demarking



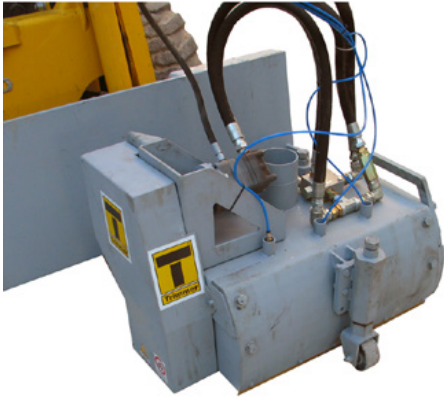
Marker cutters with 20 cm working width



Marker cutters with 25 cm working width



Marker cutters with 30 cm working width



Marker cutters with 60 cm working width



Sanding equipment



# Marker cutters with 20 cm working width



## Von Arx - FR 200 with petrol engine Honda

The FR 200 offers a very wide performance spectrum. It ranges from simple cleaning activities to difficult demarking work in the road marking sector. Thanks to its compact size and handiness, this enables very precise work on small and medium-sized areas indoors and outdoors.

ARX - 701436  
55 kg  
1 Stk.  
110 x 36.5 x 97 cm



## Von Arx - FR 200 with electric motor - 2.2 kW, 230 V / 50 Hz

The FR 200 offers a very wide performance spectrum. It ranges from simple cleaning activities to difficult demarking work in the road marking sector. Thanks to its compact size and handiness, this enables very precise work on small and medium-sized areas indoors and outdoors.

ARX - 701449  
55 kg  
1 Stk.  
110 x 36.5 x 97 cm



## CMC - CM 300 demarcation milling machine 20 cm

Machine / tiller with a width of 20 cm for removing road and floor markings. With simple handles you can make a drum change.

CMC-RSCM300V  
65 kg  
1 Stk.  
100 x 45 x 90 cm



## Scarifier TR 200 SMART with petrol engine

The TRIMMER TR 200 with gasoline engine is ideal for cleaning or roughening medium surfaces. In addition, this is also the perfect device to demark existing road markings.

TRIM-00302052  
56 kg  
1 Stk.  
370 x 1.060 x 960 mm



## Marker cutters with 25 cm working width



### Von Arx - VA 25 S with Honda petrol engine

The VA 25 S surface preparation machine is ideally suited for medium to large surfaces. There are suitable blades for every challenge. The VA 25 S is available as a gasoline or electric unit.

ARX - 707335  
100 kg  
1 Stk.  
95 x 45.5 x 116.5 cm



# Marker cutters with 30 cm working width



## VA 30 S with petrol engine Honda

Wherever surfaces need to be roughened, grooved, cleaned or decoated, the VA 30 S is the right machine. The infinitely variable depth adjustment device ensures optimum adaptation to the ground conditions. The VA 30 S is a surface preparation machine for the toughest applications.

ARX - 706275  
180 kg  
1 Stk.  
1.355 x 555 x 1.090 mm



## VA 30 SH with petrol engine Honda with hydraulic drive

For heavy cleaning and roughening work, there is the VA 30 SH. A machine that is maneuverable and easy to operate thanks to hydraulic feed. It is used wherever large-scale concrete rehabilitation, the removal of concrete slurries, dirt crusts or plastic coatings are part of everyday business.

ARX - 707533  
300 kg  
1 Stk.  
1.355 x 555 x 1.090 mm



## BORUM LineEraser (24 pins) circular milling machine

CMC Airless sprayer with diaphragm pump 12000 N for all painting jobs.

Pump capacity: 7 l/min  
Maximum pressure: 250 bar  
Motor: 3 HP electric  
Voltage: 230 V  
Weight: 53 kg

BOR-900228  
204 kg  
1 Stk.  
114 x 60 x 90 cm



## Scarifier TR 300 I/4 with petrol engine and hydraulic drive

TRIMMER TR 300 with gasoline engine and hydraulic drive is ideal for demarking existing road markings on medium to large areas. The drum can be equipped with different types of lamellas. Changing the drum is done in a few minutes.

TRIM-00302060  
315 kg  
1 Stk.  
600 x 1.400 x 1.100 mm



## TR 306 Duplex Demarking Mill Hydraulic

Duplex mounted tiller with hydraulic drive of the tilling units. For mounting on tractors, trucks or similar. Suitable for large milling jobs on country roads, highways or even airports. With hydraulically driven milling units.

TRIM-00304006  
580 kg  
1 Stk.  
1.700 x 1.350 x 900 mm



## TR 306 Duplex Demarking Mill mechanic

Duplex mounted tiller with mechanical drive of the tilling units. For mounting on tractors, trucks or similar. Suitable for large milling jobs on country roads, highways or even airports. With hydraulically driven milling units.

TRIM-00304007  
580 kg  
1 Stk.  
1.700 x 1.350 x 900 mm





# Marker cutters with 60 cm working width



## TR 600 M Demarking Mill mechanical

Attachment tiller with mechanical drive of the tilling unit. For mounting on tractors, trucks or similar. Suitable for large milling jobs on country roads, highways or even airports. With mechanically driven milling unit.

TRIM-00303040  
540 kg  
1 Stk.  
700 x 1.250 x 450 mm



## TR 600 I Demarking Mill Hydraulic

Attachment tiller with hydraulic drive of the tilling unit. For mounting on tractors, trucks or similar. Suitable for large milling jobs on country roads, highways or even airports. With hydraulically driven milling unit.

TRIM-00304011  
540 kg  
1 Stk.  
700 x 1.250 x 450 mm



# Sanding equipment



## ROLL Milling machine RO-300

The high area output, compact dimensions and low weight make the machine an ideal companion on all construction sites. Innovative components set new standards in this class.  
Working width: 300 mm

ROL-1716800  
63 kg  
1 Stk.



## ROLL Hand Grinding Machine RO-125

Universal diamond grinding machine, ideal for edge areas and on stairs.  
For all grinding and milling work.  
With extensive accessories.

ROL-1914781  
4.5 kg  
1 Stk.



## ROLL Hand Grinding Machine RO-180

Universal diamond hand grinder, ideal for the edge area.  
For all grinding and milling work.  
With extensive accessories.

ROL-1914851  
9.5 kg  
1 Stk.



# Foil laying technology



## Demarking machine for road marking film

Temporary marking foils must be permanently removed again, because now the original traffic routing applies again. With the new Puller, demarking is now very simple!

IBO-Puller  
145 kg  
1 Stk.  
1.3 x 0.75 x 0.95 m

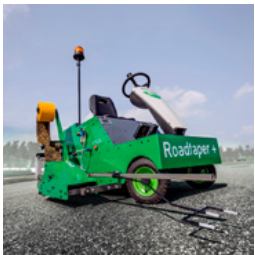
Our puller service helps to demark permanently and completely, without residues!



## Road marking film machine - Road Taper

The Road Taper impresses with enormous performance. Due to the low weight of this machine, a quick and easy procedure is possible. The RoadTaper is a very efficient machine for applying road marking films in a simple, safe and cost-optimized way.

IBO-Road Taper  
40 kg  
1 Stk.  
1 x 0.49 x 0.95 m



## Road Taper Plus - automatic Tape marking machine

The deviations and inaccuracies often caused by hand-held marking devices during film laying are a thing of the past thanks to our Road Taper Plus. As the most precise taper marking device on the market today, our Road Taper Plus eliminates the need for acceptance testing and subsequent rework, saving time and money.

IBO-Road Taper Plus  
450 kg  
1 Stk.  
1.7 x 0.75 x 1.3 m



## Pressure roller for road marking films

If marking foils do not adhere consistently to the road surface, this can lead to serious complications in road traffic! Avoid this now with the new roller with pressure roller made of high quality material! For the permanent pressing on of road marking foils.

IBO-Roller  
90 kg  
1 Stk.  
1.17 x 0.48 x 0.92 m



## Primer sprayer for road marking films

The primer sprayer for marking film is not only very easy to use in terms of handling, but also when it is needed quickly or urgently. The device ensures a precise application of the primer. The use is suitable for the application of temporary road marking films as well as for permanent solutions.

IBO-Sprayer  
23 kg  
1 Stk.  
0.655 x 0.33 x 0.9 m



## Highwayliner - Film laying device

Machine for applying temporary road marking film  
Integrated VERLEGEINHEIT road marking film  
Integrated PRIMATIK primer spraying machine

KAV-HWL  
1 Stk.



## Highwayliner - Pre-marking unit

rPre-marking paint pot made of stainless materials:- Flow cup capacity 800 ml  
- Paint quantity can be dosed  
- Can be connected to the Highwayliner using the square tubes supplied (2 meters, 3 meters or 4 meters).  
- Support of the boom with rods to prevent kinking

KAV-VMAR  
3 Stk.



# Foil laying technology



## Highwayliner - Pre-cleaning blower

Pre-cleaning blower  
rMotor-driven blower for cleaning the road surface of coarse dirt and for drying the road surface in slightly wet conditions.

KAV-VREIN

1 Stk.



## Motorized foil laying device

The motorized laying device for laying marking films for road and construction site markings.  
It is compact and easy to use.

KOE-MFVG

1 Stk.



## Pressure roller device

The RTC 300 is a film pressure unit equipped with three flexible pressure rollers and designed for mechanical film laying. It can be attached to almost all tractors. (Attachment machine optional!)

KOE-RTC300

1 Stk.



## Foil laying device

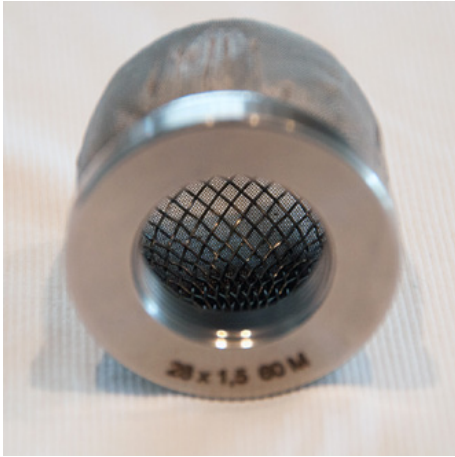
The TA150 film laying device is an inexpensive, lightweight film laying device without a cutting device.  
Cutting must be done by hand with a cutter knife.

KOE-TA-150

1 Stk.



# Marking technology



Filter



Airless nozzles



Paint guns



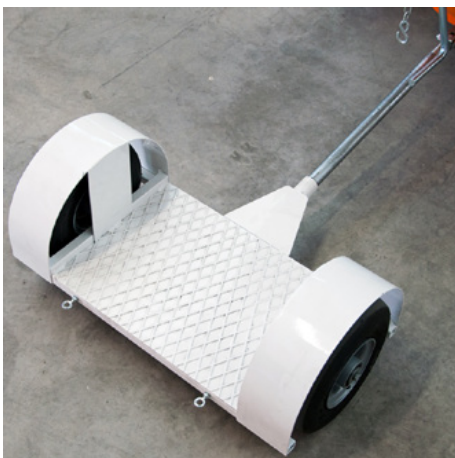
Glass bead guns



Color tubes



Color tanks



Trailer



Handziehkästen



RMCD - Road Marking Control Device



# Filter



## Paint guns Plug-in filter 100 mesh (yellow)

Paint gun plug-in filter 100 mesh (yellow).  
For filtering the marking paint in the paint spray gun.  
Ideal for polyurethane paints.

BER-2004

10 Stk.



## Paint guns Plug-in filter 50 mesh (white)

Paint spray gun insert filter 50 mesh (white).  
For filtering your marking paint in the paint spray gun.

BER-FM2002

10 Stk.



## Material filter black, 60 mesh

Material filter, mesh size 60, Easy-Out-Long, black  
Like GRACO 244067 - not an original filter  
**Diameter:** 31 mm  
**Height:** 180 mm  
**Packaging unit:** 2 pieces

BER-FM2021

2 Stk.



## Material filter blue, 100 mesh

Material filter, mesh size 100, Easy-Out-Long, blue  
Like GRACO 244068 - not an original filter  
**Diameter:** 31 mm  
**Height:** 180 mm  
**Packaging unit:** 2 pieces

BER-FM2022

2 Stk.



## High pressure color filter 60 Mesh

suitable for CMC marking machine

CMC-VE00062

**Length:** 145 mm  
**diameter**25 mm

1 Stk.

145 x 25 mm



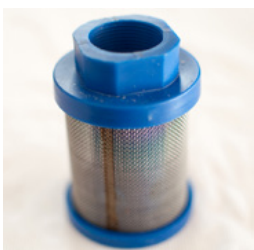
## High pressure paint filter 100 mesh

suitable for CMC marking machine

CMC-VE00063

**Length:** 145 mm  
**diameter**25 mm

1 Stk.



## Suction filter blue

Suitable for CMC machines.

CMC-VE00064

1 Stk.



# Filter



## HP Filter 1/4" FG X 1/4" M - Stainless steel

suitable for CMC marking machine

CMC-VE00080

1 Stk.



## High pressure paint filter 30 mesh

suitable for CMC marking machine

CMC-VE00110

Length: 145 mm  
Diameter: 25 mm

1 Stk.

145 x 25 mm



## RMCD - Intake filter 28 x 1.5 mm - 60 mesh

Suction filter 28 x 1.5 IG 60 mesh.  
Suction filter short. Reinforced version.

RMCD-22906

1 Stk.



## RMCD - Paint gun plug-in filter 50 mesh (white)

10 pieces gun filter 50 mesh for marking PU paints or other low-viscosity marking paints.

RMCD-FM2002

10 Stk.



## RMCD - Paint gun plug-in filter 100 mesh (yellow)

10 pieces gun filter 100 mesh for marking PU paints or other low-viscosity marking paints.

RMCD-FM2004

10 Stk.



# Airless nozzles

## Adjustable nozzle 028



Adjustable nozzle  
Size: 028  
For individual adjustment of the spray width for area markings.

BER-201328  
1 Stk.



## Airless nozzle for surface markings 219

TITAN airless nozzle for marking surfaces, symbols, etc.  
Spray angle: 20 degrees  
Bore: 0.019 inch

CMC-662-219  
1 Stk.



## Airless nozzle for surface marking 421

TITAN airless nozzle for marking surfaces, symbols, etc.  
Spray angle: 40 degrees  
Bore: 0.021 inch

CMC-662-421  
1 Stk.



## Airless nozzle for surface marking 423

TITAN airless nozzle for marking surfaces, symbols, etc.  
Spray angle: 40 degrees  
Bore: 0.023 inch

CMC-662-423  
1 Stk.



## Airless nozzle for surface markings 519

TITAN airless nozzle for marking surfaces, symbols, etc.  
Spray angle: 50 degrees  
Bore: 0.019 inch

CMC-662-519  
1 Stk.



## Airless nozzle for surface marking 521

TITAN airless nozzle for marking surfaces, symbols, etc.  
Spray angle: 50 degrees  
Bore: 0.021 inch

CMC-662-521  
1 Stk.



## Airless nozzle for line marking 213

TITAN airless nozzle for marking sharp lines.  
Spray angle: 20 degrees  
Bore: 0.013 inch

CMC-697-213  
1 Stk.





# Airless nozzles



## Airless nozzle for line markings 215

TITAN airless nozzle for marking sharp lines.  
**Spray angle:** 20 degrees  
**Bore:** 0.015 inch

CMC-697-215

1 Stk.



## Airless nozzle for line marking 217

TITAN airless nozzle for marking sharp lines.  
**Spray angle:** 20 degrees  
**Bore:** 0.017 inch

CMC-697-217

1 Stk.



## Airless nozzle for line markings 419

TITAN airless nozzle for marking sharp lines.  
**Spray angle:** 40 degrees  
**Bore:** 0.019 inch

CMC-697-419

1 Stk.



## Airless nozzle for line markings 421

Titanium airless nozzle for marking sharp lines.  
**Spray angle:** 40 degrees  
**Bore:** 0.021 inch

CMC-697-421

1 Stk.



## Airless nozzle for line markings 621

TITAN airless nozzle for marking sharp lines.  
**Spray angle:** 60 degrees  
**Bore:** 0.021 inch

CMC-697-621

1 Stk.



## Airless nozzle for line markings 623

TITAN airless nozzle for marking sharp lines.  
**Spray angle:** 60 degrees  
**Bore:** 0.023 inch

CMC-697-623

1 Stk.



## Airless nozzle for line markings 627

TITAN airless nozzle for marking sharp lines.  
**Spray angle:** 60 degrees  
**Bore:** 0.027 inch

CMC-697-627

1 Stk.



# Airless nozzles



## Airless nozzle for line marking 631

TITAN airless nozzle for marking sharp lines.  
**Spray angle:** 60 degrees  
**Bore:** 0.031 inch

CMC-697-631  
1 Stk.



## Airless nozzle for line markings 823

TITAN airless nozzle for marking sharp lines.  
**Spray angle:** 80 degrees  
**Bore:** 0.023 inch

CMC-697-823  
1 Stk.



## Airless nozzle for line markings 823

TITAN airless nozzle for marking sharp lines.  
**Spray angle:** 80 degrees  
**Bore:** 0.023 inch

CMC-697-827  
1 Stk.



## Airless nozzle for line markings 823

TITAN airless nozzle for marking sharp lines.  
**Spray angle:** 80 degrees  
**Bore:** 0.023 inch

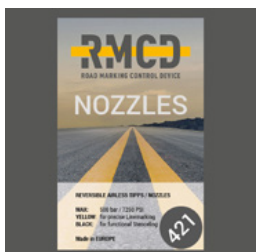
CMC-697-831  
1 Stk.



## RMCD - Airless nozzle for surface markings - 219

2 airless nozzles for surface markings including seals.  
Color: black  
Size: 219  
Made in EUROPE!

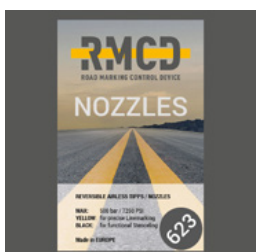
RMCD-FM6219  
2 Stk.



## RMCD - Airless nozzle for surface markings - 421

2 airless nozzles for surface markings including seals.  
Color: black  
Size: 421  
Made in EUROPE!

RMCD-FM6421  
2 Stk.



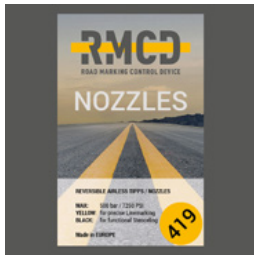
## RMCD - Airless nozzle for surface markings - 623

2 airless nozzles for surface markings including seals.  
Color: black  
Size: 623  
Made in EUROPE!

RMCD-FM6623  
2 Stk.



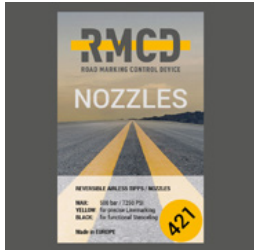
# Airless nozzles



## RMCD - Paint gun plug-in filter 50 mesh (white)

2 airless nozzles for line markings including seals.  
Color: yellow  
Size: 419  
Made in EUROPE!

RMCD-FMLM419  
2 Stk.



## RMCD - Paint gun plug-in filter 50 mesh (white)

2 airless nozzles for line markings including seals.  
Color: yellow  
Size: 421  
Made in EUROPE!

RMCD-FMLM421  
2 Stk.



## RMCD - Airless nozzle for line markings - 423

2 airless nozzles for line markings including seals.  
Color: yellow  
Size: 423  
Made in EUROPE!

RMCD-FMLM423  
2 Stk.



# Paint guns



## CMC Model C 23 - Manual airspray gun with nozzle extension and 5 meter paint hose

Manual airspray gun model no. 23  
Professional airspray gun with 400 mm nozzle extension  
5 meter paint hose

C23+P+5H  
1.6 kg  
1 Stk.  
620 x 183 x 42 mm



## CMC Model 23 - Manual airspray gun and 5 meter paint hose

Manual airspray gun model no. 23  
Professional airspray gun  
5 meter paint hose

CMC-C23+5H  
720 g  
1 Stk.  
220 x 183 x 42 mm



## CMC Model 23 - Manual airspray gun and 5 meter paint hose

Manual airspray gun model no. 23  
Professional airspray gun  
5 meter paint hose

CMC-C23+7H  
720 g  
1 Stk.  
220 x 183 x 42 mm



## Manual airspray gun CMC model 23 long (with extension) and 5 meter paint hose

Manual airspray gun model no. 23, long (with 40 cm extension)  
Professional airspray gun  
5 meter paint hose

CMC-C23+P+5H  
720 g  
1 Stk.  
220 x 183 x 42 mm



## CMC Model 23 - Manual airspray gun with nozzle extension and 7 meter paint hose

Manual airspray pistols for airspray application  
- with nozzle extension 400 mm  
- with 7 meter hose

CMC-C23+P+7H  
1.6 kg  
1 Stk.  
620 x 183 x 42 mm



## CMC Model 23 - Manual airspray gun with nozzle extension

Manual airspray gun model no. 23  
Professional airspray gun with nozzle extension 400 mm

CMC-C23+P-39  
1.6 kg  
1 Stk.  
620 x 183 x 42 mm



## CMC Model 23 - Manual airspray gun

Manual airspray gun model no. 23  
Professional airspray gun

CMC-C23-39  
720 g  
1 Stk.  
220 x 183 x 42 mm



# Paint guns

## CMC Model C 53 - Automatic air spray gun



Automatic airspray gun for the application of marking paints with airspray technology.

**Control pressure:** 4 - 6 bar

**Max. Paint pressure:** 4 - 6 bar

A nozzle of your choice is included.

CMC-C53  
1.75 kg  
1 Stk.  
275 x 140 x 73 mm

## CMC Model C 53G - Automatic airspray gun



Automatic airspray gun for the application of marking paints with airspray technology, also for larger nozzles.

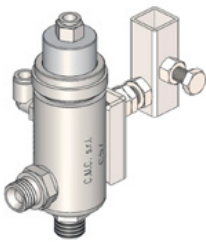
**Control pressure:** 4 - 6 bar

**Max. Paint pressure:** 4 - 6 bar

A nozzle of your choice is included.

CMC-C53G  
2.7 kg  
1 Stk.  
305 x 140 x 96 mm

## CMC Model C 57 - Automatic airless gun



C57 automatic airless gun

The gun opens and closes by means of pneumatic control.

CMC-C57  
1.1 kg  
1 Stk.  
140 x 120 x 70 mm

## CMC Model C 82 - Automatic airless gun



CMC-C82I

1 Stk.

## CMC C 94 Manual gun with 10 meter hose



In order to also be able to carry out area markings over greater distances.

CMC-C94+10H

1 Stk.

## CMC C 94 Manual gun with nozzle extension and 10 meter hose



In order to also be able to carry out area markings over greater distances.  
Including 45 cm nozzle extension

CMC-C94+P+10H

1 Stk.

## CMC Model C 94 N - Manual airless gun short



Airless gun C94 short.

CMC-C94N

**Connection:** 1/4 inch

Without hand guard, Without nozzle holder, Without airless nozzle

1 Stk.



# Paint guns

## Kamber MOD 38 - Low pressure paint gun with atomizing air



Kamber model 38 ST low-pressure paint spray gun for road marking.  
Swiss quality & manufacture.  
Complies with the applicable European standards.

KAM-38 ST  
2.5 kg  
1 Stk.  
200 x 70 mm

## Kamber MOD 40 HP GST - High pressure paint gun



HP 40 high-pressure paint spray gun for optimum road markings  
For road marking. Swiss quality and manufacture.  
Complies with the applicable European standards.

KAM-40 HP  
1 Stk.

## Kamber MOD HP 50 GST - High-pressure paint spray gun without air atomization



High-pressure paint spray gun without air atomization for road marking.  
Swiss quality & manufacture.  
Complies with the applicable European standards.

KAM-50 HP  
1 Stk.

## Kamber 8 HR low-pressure paint gun



Hand paint gun MOD 8 HR for road marking  
Swiss quality and manufacture.  
In accordance with the applicable European standards.

KAM-8 HR  
1.2 kg  
1 Stk.  
195 x 45 mm

## Kamber MOD 80 Low-pressure paint spray gun with air atomization



Kamber model 80 ST paint spray gun for road markings  
Swiss quality & manufacture.  
Complies with the applicable European standards.

KAM-80 ST  
2.6 kg  
1 Stk.  
200 x 80 mm

## Kamber MOD 84 S low pressure paint gun



Kamber model 84 S low pressure paint gun  
Swiss quality & manufacture.  
Complies with the applicable European standards.

KAM-84 S  
1 Stk.

## Kamber MOD 90 Low-pressure paint spray gun with air atomization



Pneumatic paint spray gun Kamber model 90 for road markings  
Swiss quality & manufacture.  
Complies with the applicable European standards.

KAM-90  
3.1 kg  
1 Stk.  
220 x 70 mm



# Glass bead guns



## CMC Model C 18 - Glass bead gun

Glass bead gun for easy application of reflective glass beads using compressed air.  
Also ideal for shooting in reactive glass beads.  
The air output of the compressed air can be infinitely adjusted.

CMC-C18  
1 Stk.



## CMC Model C 21 - Glass bead gun

Automatic glass bead gun  
Control pressure 4 - 6 bar  
Atomizer pressure: 0.5 - 6 bar

CMC-C21  
2.7 kg  
1 Stk.  
350 x 165 x 96 mm

With 6 mm nozzle and diffuser. Other nozzle sizes available.



## CMC Model C 29 - Glass bead gun

Automatic glass bead gun  
Control pressure 4 - 6 bar  
Atomizer pressure: 1 - 6 bar

CMC-C29  
1.9 kg  
1 Stk.  
210 x 190 x 96 mm

With 6 mm nozzle and diffuser. Other nozzle sizes available.



## Kamber P 80 ST - Pneumatic bead gun

Pneumatic glass bead gun Kamber Model 80.  
Swiss quality & manufacturing. Complies with the valid European standards.

KAM-P 80 ST  
1 Stk.



## Kamber P 84 ST - Pneumatic bead gun

Pneumatic glass bead gun Kamber model 84 for road marking.  
Complies with European standards.  
Swiss quality and manufacturing.

KAM-P 84  
1.7 kg  
1 Stk.



## Kamber P 86 ST - Pneumatic bead gun

Pneumatic bead gun Kamber Model 86 for road marking.  
Conforms to European standards.  
Swiss quality and manufacturing.

KAM-P 86 ST  
1 Stk.



## Kamber P 90 ST - Pneumatic bead gun

Pneumatic high performance glass bead gun Kamber model 90 for road markings.  
Complies with European standards.  
Swiss quality and manufacturing.

KAM-P 90 ST  
1 Stk.



# Glass bead guns

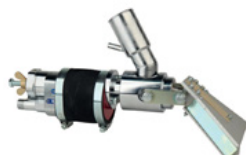


## Kamber hand glass bead gun P 100

This gun is compatible with all types of glass beads for road markings.  
Hand bead gun for road marking. Swiss quality and manufacture.  
Compliant with European standards.

KAM-P100

1 Stk.



## Kamber P 40/83 ST - Pneumatic bead gun

Pneumatic bead gun Kamber P 40 for road marking.  
Complies with European standards.  
Swiss quality and manufacturing.

KAM-P40/83ST

1 Stk.





## Color tubes



### Anti-pulsation hose

Length = 2,100 mm  
F 3/8 - F 3/8  
for AR 30 Pro with round chassis

CMC-EXIT2100

1 Stk.  
2.100 mm



### Anti-pulsation hose

Length = 2,400 mm  
F 3/8  
F90 3/8  
for AR 30 Pro

CMC-EXIT2400

1 Stk.  
2.400 mm



### Anti-pulsation hose

Length = 2,550 mm  
F-F  
For device that holds the pulsation hose together with black straps.

CMC-EXIT2550

1 Stk.  
2.550 mm



### Intake hose

Intake hose for the AR 30 series with diaphragm pumps.

CMC-TV1ASPAR30

1 Stk.



### Suction hose for AR 30PRO-2C, 2-color machine

Intake hose for the AR 30 Pro 2C  
Two-color marking machine

CMC-TV1ASPAR30-2C

1 Stk.



### Suction hose for vertical diaphragm pump

Intake hose for the AR 30 series with vertical diaphragm pump.

CMC-TV1ASPAR30-V

1 Stk.



### High pressure paint hose 1/4" 10 meter

High-pressure paint hose

CMC-TVAPR1/410MT

Length: 10 meters  
Connection: 1/4 inch

1 Stk.



## Color tubes



### Circulation hose

High-pressure circulation hose suitable for new changeover valve VS38-000

CMC-TVAPR1/41100I

1 Stk.



### High-pressure paint hose 1/4" 15 meters long

High-pressure paint hose

CMC-TVAPR1/415MT

Length: 15 meters

1 Stk.

Connection: 1/4 inch



### Set of suction hose and circulation hose

Fits AR 30 Pro series with diaphragm pumps.

CMC-VE00081

1 Stk.



## Color tanks



### Paint-Bucket with Lid made of Stainless-Steel

Stainless steel paint container with lid to match AR 30 series.

**Diameter:** 33 cm

**Height:** 40 cm

**Capacity:** Approx. 30 liters

CMC-CONTINOX30C

1 Stk.

33 x 33 x 40 cm



### 50 liters plastic paint tank

CMC-KITCONT50

1 Stk.



### 50 liter plastic paint tank

For the extended performance kit of your marking works.

50 liter paint tank for your CMC marking machine.

Made of plastic with lid.

CMC-PL00199

1 Stk.



# Trailer



## Trailer for Cones

For easy application and removal of traffic cones on the roadway.

CMC-CARCONI

1 Stk.



## Trailer with standing driver

Trailer for standing driver - hitchable to CMC machines with hydraulic drive. Foldable with a chain system.

CMC-CRPROP

1 Stk.



## Trailer with driving seat

Trailer with seat - can be coupled to CMC machines with hydraulic drive.

CMC-CRSED

1 Stk.



# Handziehkästen



## Hand pull box width: 10 cm

Hand-drawing box for the application of thermoplastic and cold plastic materials.

Width: 10 cm

BOR-108501

1 Stk.  
10 cm



## Hand pull box width: 12 cm

Hand-drawing box for the application of thermoplastic and cold plastic materials.

Width: 12 cm

BOR-110444

1 Stk.  
12 cm



## Hand-drawn box width: 15 cm

Hand-drawing box for the application of thermoplastic and cold plastic materials.

Width: 15 cm

BOR-110445

1 Stk.  
15 cm



## Hand-drawn box width: 15 cm

Hand-drawing box for the application of thermoplastic and cold plastic materials.

Width: 15 cm

BOR-110446

1 Stk.  
20 cm



## Hand-drawn box width: 15 cm

Hand-drawing box for the application of thermoplastic and cold plastic materials.

Width: 15 cm

BOR-110448

1 Stk.  
25 cm



## Hand-drawn box width: 15 cm

Hand-drawing box for the application of thermoplastic and cold plastic materials.

Width: 15 cm

BOR-110451

1 Stk.  
50 cm



# RMCD - Road Marking Control Device



## RMCD-Drive Cab Control Joystick

The RMCD-Drive Cab Joystick is the control unit for your RMCD solution

BPL-4000109

1 Stk.



## Inductive sensor INI marking IFM204

suitable for RMCD-Light

BPL-4000440

1 Stk.



## German plug, 3-pin, overmolded, IP67, 0.75mm<sup>2</sup>

2m-PUR / DT06-3S-A/K1/0.75/2m

BPL-4001901

for pressure sensor of RMCD - Road Marking Control Device

1 Stk.  
5.000 mm



## RMCD display OPUS B3 Eco Basic QT

Suitable for:  
RMCD-Standard  
RMCD-Advanced  
RMCD-Professional

BPL-4001903

1 Stk.



## Screen M835-01

The DSEM835 is a 3.5-inch programmable display designed for use in vehicles and off-highway machinery. The DSEM835 offers the user excellent flexibility. The DSEM835 is configured with CODESYS 3.5.  
suitable for RMCD-Light

BPL-4001905

1 Stk.  
112.5 x 115 x 49 mm



## RMCD pressure sensor HP - Airless

Electronic pressure sensor; 0...250 bar; 0...3625 psi;  
1/4" external thread  
rAnalog signal; 4...20 mA

BPL-4001945

1 Stk.



## RMCD encoder

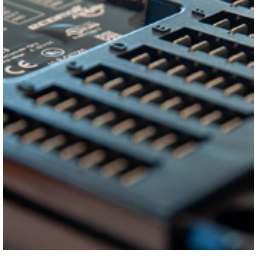
Dimension:  
Diameter 36,5mm / L = 76mm  
without pickup wheel

BPL-4001946

1 Stk.



# RMCD - Road Marking Control Device



## RMCD CAN bus

suitable for RMCD-Road-Marking-Control-Device

BPL-4001977

1 Stk.



## Y-cable KMM RMCD-Drive to RMCD-KeyPad

suitable for RMCD-Key-Pad - Professional

BPL-4002134

1 Stk.



## Wiring harness for RMCD Light

- Connection to display M835-01
- Connection to INI marker
- Connection to pressure sensor
- Connection to rotary encoder
- Connection to power supply

BPL-4002189

1 Stk.



## RMCD pressure sensor LP - Airspray

Electronic pressure sensor; 0...10 bar  
1/4" external thread

BPL-4002205

1 Stk.



## Housing with board and cable

Incl. assembly of the board and cable set.  
Cable for encoder included.

BPL-A1005812

1 Stk.

Cable for additional sensors, telematics module and actuators.



## M12 cable socket angled 5m

5 meter 4pin CAN cable with 120 Ohm resistor

BPL-B12090-CPS-002

for encoder of the RMCD - Road Marking Control Device

1 Stk.

5.000 mm



## RMCD keypad module 8 buttons - For entering markings

RMCD key pad - For RMCD Professional  
For quick and easy selection of marking presets.  
2 lines with 4 keys each  
Numbered from 1 to 8

BPL-B12500

1 Stk.



# RMCD - Road Marking Control Device



## Conversion KIT RMCD Light to marking machine

Suitable for RMCD Light

CMC-KIT00087

1 Stk.



## Pickup wheel for encoder

For recording the speed of your machine.

CMC-SU00031

Inner diameter of mount: 10 mm

1 Stk.



## Humidity temperature probe

Humidity-temperature probe, suitable for DZK & eStat20(D) probe, pluggable, with flange socket suitable for RMCD - Road Marking Control Device

GAT-19.001-YS

1 Stk.



## Filter: ZE05 PTFE filter $\varnothing$ 12, IP 65

Operating range: -40 ... 125C mounted

GAT-20.078

1 Stk.



## Humidity and temperature meter

DZK  
Transmitter for pluggable probes

GAT-DZK300F13700-YY

1 Stk.



## CT-SF22-C3 Miniature pyrometer

suitable for RMCD - Advanced

MEP-4800103.003

1 Stk.



## Antenna cable

assembled with black strands, 1mm<sup>2</sup>, L=2m

PRO-136000198

1 Stk.  
2 m





# RMCD - Road Marking Control Device



## Antenna for telematics system

Mobile radio/GNSS combination roof antenna, flat-rectangular, roof mounting for screwing

PRO-157000121

1 Stk.  
124 x 80 x 31 mm



## CANlink mobile 3657 for telematics module

Wireless CAN interface for data exchange  
rvia 2G/GSM/GPRS/EDGE, 3G/UMTS/HSPA and 4G/LTE Worldwide

PRO-253004097

1 Stk.  
123 x 86 x 35 mm



## RMCD-Advanced

With the RMCD-Road Marking Control Device ADVANCED, we have developed a completely new system for operating road marking machines with greater convenience, based on the RMCD-CAN bus system. The variably configurable system offers a wide range of applications.

RMCD-ADV

1 Stk.



## RMCD-LIGHT

RMCD Light for controlling:  
- Speed  
- color printing  
- Recording of marking work  
with color display

RMCD-Light

1 Stk.



## RMCD-Professional

With the RMCD-Road Marking Control Device PROFESSIONAL, we have developed a completely new system for operating road marking machines with greater convenience, based on the RMCD-CAN bus system. The variably configurable system offers a wide range of applications.

RMCD-PRO

1 Stk.



## RMCD standard

With the RMCD-Road Marking Control Device STANDARD, we have developed a completely new system for operating road marking machines with greater convenience, based on the RMCD-CAN bus system. The variably configurable system offers a wide range of applications.

RMCD-STD

1 Stk.



# Marking accessories



## High pressure paint filter 60 Mesh

CMC-AR30P-03-008

1 Stk.



## Winder for pre-marking rope 26 cm

Order on the construction site is particularly important in the field of road marking.

With this rope drum with transmission, your rope for pre-markings can be easily and, above all, quickly rolled up and stored again.

Roll width: 26 cm

CMC-ARAVC\_26

1 Stk.



## Winder for pre-marking rope 42 cm

Order on the construction site is particularly important in the field of road marking.

With this rope drum with transmission, your pre-marking rope can be easily and, above all, quickly rolled up again and stowed away.

Roll width: 42 cm

CMC-ARAVC\_42

1 Stk.



## Side attachment for pre-marking with 26 liter pressure tank

Simple system for pre-marking road markings using a pressure tank.

CMC-BRALAT+SRSP26

1 Stk.



## CPm2 Airspray stand-alone sprayer for beads and fillers

Petrol engine: 6 hp

Compressor: 394 l/min

1 hand gun for glass beads/antiskids

Swivel front wheel

Conical pressure tank for glass beads/antiskids 38,5 l (max 3 bar)

CMC-CPm2 - Beads

123 kg

1 Stk.

160 x 65 x 140 cm



## Metal stencils for metal letters 20 cm height

Floor marking template made of galvanized sheet metal for letters.

Bent up on the long side for easy application.

The exact weight of each template depends on the size.

CMC-DL20

0.38 kg

200 mm



## Metal stencils SET for metal letters 20 cm high - A to Z

Floor marking template made of galvanized sheet metal for letters.

Bent up on the long side for easy application.

The exact weight of each template depends on the size.

CMC-DL20-SET

3.8 kg

200 mm



# Marking accessories



## Metal stencils for metal letters 40 cm high

Floor marking template made of galvanized sheet metal for letters.  
Bent up on the long side for easy application.  
The exact weight of each template depends on the size.

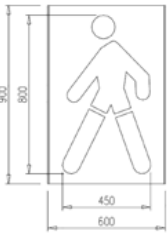
CMC-DL40  
0.38 kg  
400 mm



## Metal stencils SET for metal letters 40 cm high - A to Z

Floor marking template made of galvanized sheet metal for letters.  
Bent up on the long side for easy application.  
The exact weight of each template depends on the size.

CMC-DL40-SET  
3.8 kg  
400 mm



## Pedestrian - metal 80 cm height

Marking template - pedestrian  
**Width:** 450 mm  
**Height:** 800 mm

CMC-DMPSP  
450 x 800 mm



## Metal stencils for numbers metal 20 cm height

Floor marking template made of galvanized sheet metal for numbers.  
Bent up on the long side for easy application.  
The exact weight of each template depends on the size.

CMC-DN20  
0.32 kg  
200 mm



## Metal stencils SET for metal numbers 20 cm high - 0 to 9

SET floor marking templates made of galvanized sheet metal for numbers 0 to 9.  
Bent up on the long side for easy application.  
The exact weight of each template depends on the size.

CMC-DN20-SET  
3.2 kg  
300 mm



## Metal stencils for numbers metal 30 cm height

Floor marking template made of galvanized sheet metal for numbers.  
Bent up on the long side for easy application.  
The exact weight of each template depends on the size.

CMC-DN30  
0.54 kg  
300 mm



## Metal stencils SET for metal numbers 30 cm high - 0 to 9

SET floor marking templates made of galvanized sheet metal for numbers 0 to 9.  
Bent up on the long side for easy application.  
The exact weight of each template depends on the size.

CMC-DN30-SET  
5.4 kg  
300 mm



# Marking accessories



## Glass beads spreader

Glass bead spreader cart for flat application of reflective glass beads to guardrails, retaining beams, etc.

Working width: 53 cm  
Bead quantity wheel small  $\varnothing$  160 mm: approx. 320 g/m<sup>2</sup>  
Bead quantity wheel large  $\varnothing$  200 mm: approx. 250 g/m<sup>2</sup>

CMC-GBS 550  
36 kg  
1 Stk.  
56 x 68 x 93 cm



## Plastic funnel

Plastic funnel with a diameter of 470 mm for filling with marking paint.

CMC-INBT400  
1 Stk.  
470 mm



## Glass beads dispenser - Handhold

Very sturdy but still lightweight reflex glass bead spreader made of stainless steel. For easy and quick spreading of lines or areas in the field of road marking.

CMC-SPRGPRLM  
2.5 kg  
1 Stk.  
12 x 18 x 47 cm



## Wetfilm measuring WG 2

Wet film measuring comb for determining the wet film thickness. corresponds to ISO 2808-7B  
stainless steel  
25 - 2,000  $\mu$ m  
(hexagonal /36 teeth)

MTV-WG 2  
1 Stk.



## Cover tapes 50 mm wide

MÜR-4246  
24 Stk.  
50 mm



## Cover tapes 30 mm wide

MÜR-4248  
32 Stk.  
30 mm



## Cover tapes 75 mm wide

MÜR-4291  
16 Stk.  
75 mm



## Marking accessories



Nail poles 25 mm

ROL-1513460

1 Stk.



Nail poles 50 mm

ROL-1513462

1 Stk.



# Road drying units



## Zirocco - Hammer Jet - Road dryer for road marking and road rehabilitation

- Hammer Jet** - The unique portable road dryer!
- Drying speed up to 2.5 km/h.
  - Ergonomic and effective
  - Weighs only 23 kg

ATT-950000  
23 kg  
1 Stk.  
37 x 152 cm



## Zirocco - Hammer Jet MAX - Road dryer for road marking and road rehabilitation

- Hammer Jet MAX** - The unique portable road dryer!
- Drying speed up to 3.5 km/h.
  - Ergonomic and effective
  - Weighs only 26 kg

ATT-9500032  
26 kg  
1 Stk.  
37 x 152 cm



## Zirocco - F 200 - Road dryer for road marking and road rehabilitation

- The most powerful road dryer in the world!  
Drying speed up to 5 km/h.

ATT-F200  
140 kg  
1 Stk.  
165 x 55 x 130 cm



# LongLife floor marking films



## LongLife floor marking tape 100 mm, 50 meters

myLean® floor markings can be used for almost all indoor surfaces. Our floor markings are self-adhesive and therefore quick and easy to apply. rLongLife floor markings are forklift-proof, even against turning on the marking.

MYL-LL-100  
1 Stk.  
50 x 100 m



## LongLife floor marking tape anti-slip 100 mm, 18 meters

myLean® floor markings can be used on almost all indoor surfaces. Our floor markings are self-adhesive and therefore quick and easy to apply. rLongLife anti-slip floor markings are sanded and therefore slip-resistant.

MYL-LL-100-AR  
1 Stk.  
18 x 100 m



## LongLife floor marking tape 50 mm, 50 meters

myLean® floor markings can be used on almost all indoor surfaces. Our floor markings are self-adhesive and therefore quick and easy to apply. rLongLife floor markings are forklift-proof, even against turning on the marking.

MYL-LL-50  
1 Stk.  
50 x 50 m



## LongLife floor marking tape anti-slip 50 mm, 18 meters

myLean® floor markings can be used on almost all indoor surfaces. Our floor markings are self-adhesive and therefore quick and easy to apply. rLongLife anti-slip floor markings are sanded and therefore slip-resistant.

MYL-LL-50-AR  
1 Stk.  
18 x 50 m



## LongLife floor marking tape hatched black/ yellow 50 mm, 25 meters

myLean® floor markings can be used on almost all indoor surfaces. Our floor markings are self-adhesive and therefore quick and easy to apply. rLongLife floor markings are forklift-proof, even against turning on the marking.

MYL-LL50-SG  
1 Stk.  
25 x 50 m



## LongLife floor marking tape 75 mm, 50 meters

myLean® floor markings can be used for almost all indoor surfaces. Our floor markings are self-adhesive and therefore quick and easy to apply. LongLife floor markings are forklift-proof, even against turning on the marking.

MYL-LL-75  
1 Stk.  
50 x 75 m



## LongLife floor marking tape anti-slip 75 mm, 18 meters

myLean® floor markings can be used on almost all indoor surfaces. Our floor markings are self-adhesive and therefore quick and easy to apply. rLongLife anti-slip floor markings are sanded and therefore slip-resistant.

MYL-LL-75-AR  
1 Stk.  
18 x 75 m



# LongLife floor marking films



## LongLife floor marking tape hatched black/ yellow 75 mm, 25 meters

myLean® floor markings can be used on almost all indoor surfaces. Our floor markings are self-adhesive and therefore quick and easy to apply. rLongLife floor markings are forklift-proof, even against turning on the marking.

MYL-LL75-SG

1 Stk.  
25 x 75 m



## LongLife transparent bottom window for DIN A5 labeling

Our floor windows are used to attach printed documents to the floor or walls, allowing areas to be marked easily and securely.  
Packaging unit: 10 pieces

MYL-LL-KL-A

10 Stk.  
310 x 250 mm



## LongLife transparent bottom window for DIN A4 labeling

Our floor windows are used to attach printed documents to the floor or walls, allowing areas to be marked easily and securely.  
Packaging unit: 10 pieces

MYL-LL-KL-A4-0

10 Stk.  
400 x 310 mm





## Marking colors



High Solid Colors

Splatter sculptures

Cold sculptures



Epoxy-modified high-solids inks

Polyurethane colors

Markierfarben für Rennstrecken



Prefabricated thermoplastics



# High Solid Colors



## STRAMAT TM/56 road marking paint white in 25 kg container

STRAMAT road marking paints are mainly used on asphalt or concrete pavements, for edge and center lines, parking lots, clearance markings or other markings in public or private areas.

OKA-100.1000.001  
25 kg  
25 kg



## STRAMAT TM/56 road marking paint traffic yellow in 25 kg container

STRAMAT road marking paints are mainly used on asphalt or concrete pavements, for edge and center lines, parking lots, clearance markings or other markings in public or private areas.

OKA-100.1100.001  
25 kg  
25 kg



## STRAMAT TM/56 road marking paint traffic yellow in 25 kg container

STRAMAT road marking paints are mainly used on asphalt or concrete pavements, for edge and center lines, parking lots, clearance markings or other markings in public or private areas.

OKA-100.2100.001\_35  
35 kg  
35 kg



## STRAMAT TM/56 road marking paint traffic red in 25 kg container

STRAMAT road marking paints are mainly used on asphalt or concrete pavements, for edge and center lines, parking lots, clearance markings or other markings in public or private areas.

OKA-100.3100.001  
25 kg  
25 kg



## STRAMAT TM/56 road marking paint traffic blue in 25 kg container

STRAMAT road marking paints are mainly used on asphalt or concrete pavements, for edge and center lines, parking lots, clearance markings or other markings in public or private areas.

OKA-100.5100.001  
25 kg  
25 kg



## STRAMAT TM/56 road marking paint traffic green in 25 kg container

STRAMAT road marking paints are mainly used on asphalt or concrete pavements, for edge and center lines, parking lots, clearance markings or other markings in public or private areas.

OKA-100.6100.001  
25 kg  
25 kg



## STRAMAT TM/56 road marking paint gray in 25 kg container

STRAMAT road marking paints are mainly used on asphalt or concrete pavements, for edge and center lines, parking lots, clearance markings or other markings in public or private areas.

OKA-100.7100.001  
25 kg  
25 kg



# High Solid Colors



## STRAMAT TM/56 road marking paint black in 25 kg container

STRAMAT road marking paints are mainly used on asphalt or concrete pavements, for edge and center lines, parking lots, clearance markings or other markings in public or private areas.

OKA-100.9100.001  
25 kg  
25 kg



## Stramat thinner

All-purpose thinner 23 kg (26.65 liters) in 30 liter tin cans  
For thinning 1-component paints and for use as a cleaning thinner

OKA-610  
23 kg  
30 kg



# Splatter sculptures



## STRAMAT cold spray plastic white in 25 kg container

STRAMAT cold spray plastic is solvent-free and based on reactive methacrylate resins. This is universally applicable in the field of permanent marking and is suitable for application by means of machine spray application (low pressure or airless).

OKA-120.0000.A11  
25 kg  
25 kg



## STRAMAT cold spray plastic white comp. B for 1:1 in 25 kg containers

STRAMAT cold spray plastic is solvent-free and based on reactive methacrylate resins. It can be used universally in the field of permanent marking and is suitable for machine spray application (low pressure or airless).  
Component B for 1:1 cold spray plastic

OKA-120.0000-B11  
25 kg  
25 kg



## STRAMAT Spray Plastic Reactive Thinner in 5 kg container

For thinning spray and cold plastics.

OKA-670-05  
5 kg



## STRAMAT Spray Plastic Reactive Thinner in 30 kg container

For thinning spray and cold plastics.

OKA-670-30  
30 kg



# Cold sculptures



## Cold plastic powder hardener in 150 g container

Hardener powder (peroxide hardener) for all cold plastic materials

OKA-110.K200.150  
150 g  
0.15 kg



## STRAMAT 2K Rollplastik 2K/4H white in 12 kg container

STRAMAT 2K traffic surface coating is a reactive multi-component cold plastic system with excellent abrasion resistance and high grip.

OKA-113.0000.001  
12 kg  
12 kg



## STRAMAT 2K Rollplastik 2K/4H yellow in 12 kg container

STRAMAT 2K traffic surface coating is a reactive multi-component cold plastic system with excellent abrasion resistance and high skid resistance.

OKA-113.1023.001  
12 kg  
12 kg



## STRAMAT 2K Rollplastik 2K/4H traffic green in 12 kg container

STRAMAT 2K traffic surface coating is a reactive multi-component cold plastic system with excellent abrasion resistance and high skid resistance.

OKA-113.2003.001  
12 kg  
12 kg



## STRAMAT 2K Rollplastik 2K/4H traffic red in 12 kg container

STRAMAT 2K traffic surface coating is a reactive multi-component cold plastic system with excellent abrasion resistance and high skid resistance.

OKA-113.3020.001  
12 kg  
12 kg



## STRAMAT 2K Rollplastik 2K/4H blue in 12 kg container

STRAMAT 2K traffic surface coating is a reactive multi-component cold plastic system with excellent abrasion resistance and high skid resistance.

OKA-113.5012.001  
12 kg  
12 kg



## STRAMAT 2K Rollplastik 2K/4H traffic grey in 12 kg container

STRAMAT 2K traffic surface coating is a reactive multi-component cold plastic system with excellent abrasion resistance and high skid resistance.

OKA-113.7042.001  
12 kg  
12 kg



# Cold sculptures



## STRAMAT 2K Rollplastic 2K/4H black in 12 kg container

STRAMAT 2K traffic surface coating is a reactive multi-component cold plastic system with excellent abrasion resistance and high skid resistance.

OKA-113.9005.001  
12 kg  
12 kg



## STRAMAT 2K Rollplastik 2K/4H traffic green in 12 kg container

STRAMAT 2K traffic surface coating is a reactive multi-component cold plastic system with excellent abrasion resistance and high skid resistance.

OKA-113-6024-001  
12 kg  
12 kg



## STRAMAT 2K rubbing plastic 2K/4H white in 10 kg container

STRAMAT 2K traffic surface coating is a reactive multi-component cold plastic system with excellent abrasion resistance and high grip. The marking surfaces produced are permanently elastic, weather-resistant and have a long service life.

OKA-114.0000.001  
10 kg  
10 kg



## STRAMAT 2K rubbing plastic 2K/4H traffic red in 10 kg container

STRAMAT 2K traffic surface coating is a reactive multi-component cold plastic system with excellent abrasion resistance and high grip. The marking surfaces produced are permanently elastic, weather-resistant and have a long service life.

OKA-114.3020.001  
10 kg  
10 kg



## STRAMAT 2K rubbing plastic 2K/4H traffic green in 10 kg container

STRAMAT 2K traffic surface coating is a reactive multi-component cold plastic system with excellent abrasion resistance and high grip. The marking surfaces produced are permanently elastic, weather-resistant and have a long service life.

OKA-114.6024.001  
10 kg  
10 kg



## STRAMAT 2K rubbing plastic 2K/4H traffic yellowbin in 10 kg container

STRAMAT 2K traffic surface coating is a reactive multi-component cold plastic system with excellent abrasion resistance and high grip. The marking surfaces produced are permanently elastic, weather-resistant and have a long service life.

OKA-114-1023.001  
10 kg  
10 kg



## STRAMAT 2K rubbing plastic 2K/4H traffic blue in 10 kg container

STRAMAT 2K traffic surface coating is a reactive multi-component cold plastic system with excellent abrasion resistance and high grip. The marking surfaces produced are permanently elastic, weather-resistant and have a long service life.

OKA-114-5017.001  
10 kg  
10 kg



# Cold sculptures



## STRAMAT 2K rubbing plastic 2K/4H traffic grey in 10 kg container

STRAMAT 2K traffic surface coating is a reactive multi-component cold plastic system with excellent abrasion resistance and high grip. The marking surfaces produced are permanently elastic, weather-resistant and have a long service life.

OKA-114-7042.001

10 kg

10 kg



# Epoxy-modified high-solids inks



## STRAMAT TM/56-EP epoxy modified HS paint white in 25 kg container

The 2-component road marking paint STRAMAT 2-K-TM/56 EP is additionally epoxy-modified, which enables higher resistance, better adhesion as well as longer durability. It is particularly popular for use on difficult soils. Often also in combination with a colorless polyurethane sealer.

OKA-105.0000.001  
25 kg  
25 kg



## STRAMAT TM/56-EP epoxy modified HS paint yellow in 25 kg container

The 2-component road marking paint STRAMAT 2-K-TM/56 EP is additionally epoxy-modified, which enables higher resistance, better adhesion as well as longer durability. It is particularly popular for use on difficult soils. Often also in combination with a colorless polyurethane sealer.

OKA-105.0100.001  
25 kg  
25 kg



## STRAMAT TM/56-EP epoxy modified HS paint red in 25 kg container

The 2-component road marking paint STRAMAT 2-K-TM/56 EP is additionally epoxy-modified, which enables higher resistance, better adhesion as well as longer durability. It is particularly popular for use on difficult soils. Often also in combination with a colorless polyurethane sealer.

OKA-105.3020.001  
25 kg  
25 kg



## STRAMAT TM/56-EP epoxy modified HS paint blue in 25 kg container

The 2-component road marking paint STRAMAT 2-K-TM/56 EP is additionally epoxy-modified, which enables higher resistance, better adhesion as well as longer durability. It is particularly popular for use on difficult soils. Often also in combination with a colorless polyurethane sealer.

OKA-105.5100.001  
25 kg  
25 kg



## STRAMAT TM/56-EP epoxy modified HS paint green in 25 kg container

The 2-component road marking paint STRAMAT 2-K-TM/56 EP is additionally epoxy-modified, which enables higher resistance, better adhesion as well as longer durability. It is particularly popular for use on difficult soils. Often also in combination with a colorless polyurethane sealer.

OKA-105.6100.001  
25 kg  
25 kg



## STRAMAT TM/56-EP epoxy modified HS paint black in 25 kg container

The 2-component road marking paint STRAMAT 2-K-TM/56 EP is additionally epoxy-modified, which enables higher resistance, better adhesion as well as longer durability. It is particularly popular for use on difficult soils. Often also in combination with a colorless polyurethane sealer.

OKA-105.9005.001  
25 kg  
25 kg



## Hardener for STRAMAT TM/56-EP in 2.5 kg container

Hardener to epoxy-modified HS-Farbe.

OKA-105.K200.001  
2.5 kg  
2.5 kg





# Epoxy-modified high-solids inks



## Stramat thinner

All-purpose thinner 23 kg (26.65 liters) in 30 liter tin cans  
For thinning 1-component paints and for use as a cleaning thinner

OKA-610  
23 kg  
30 kg



# Polyurethane colors



## STRAMAT 2K PU hall marking paint RAL white 9010 in 5 kg container

Solvent-containing 2-component hall marking paint based on polyurethane. For highest demands on mechanical and chemical resistance, high adhesion and low susceptibility to soiling.

OKA-140.0000.001  
5 kg  
5 kg



## STRAMAT 2K PU hall marking paint yellow RAL 1023 in 5 kg container

Solvent-containing 2-component hall marking paint based on polyurethane. For highest demands on mechanical and chemical resistance, high adhesion and low susceptibility to soiling.

OKA-140.1023.001  
5 kg  
5 kg



## STRAMAT 2K PU hall marking paint red RAL 3020 in 5 kg container

Solvent-containing 2-component hall marking paint based on polyurethane. For highest demands on mechanical and chemical resistance, high adhesion and low susceptibility to soiling.

OKA-140.3020.001  
5 kg  
5 kg



## Hardener for STRAMAT 2K PU hall marking paint in 0.5 kg container

Hardener to - Solvent-based 2-component hall marking paint based on polyurethane. For highest demands on mechanical and chemical resistance, high adhesion and low susceptibility to soiling.

OKA-140.K200.001  
0.5 kg  
0.5 kg



## Stramat thinner

All-purpose thinner 23 kg (26.65 liters) in 30 liter tin cans  
For thinning 1-component paints and for use as a cleaning thinner

OKA-610  
23 kg  
30 kg



# Markierfarben für Rennstrecken



Bild: MAPEI Austria

## TNS Race Track - traffic yellow - 1023 Marking paint for race tracks

TNS Race Track is a fast film-forming marking product based on acrylic resin with selected fillers in aqueous dispersion. It has been specially formulated and is used for marking asphalt tracks on road racing circuits.

MAP-6ML496122  
22 kg



Bild: MAPEI Austria

## TNS Race Track - traffic orange - 2009 Marking paint for race tracks

TNS Race Track is a fast film-forming marking product based on acrylic resin with selected fillers in aqueous dispersion. It has been specially formulated and is used for marking asphalt tracks on road racing circuits.

MAP-6ML496322  
22 kg



Bild: MAPEI Austria

## TNS Race Track - traffic red - 3020 Marking paint for race tracks

TNS Race Track is a fast film-forming marking product based on acrylic resin with selected fillers in aqueous dispersion. It has been specially formulated and is used for marking asphalt tracks on road racing circuits.

MAP-6ML496422  
22 kg



Bild: MAPEI Austria

## TNS Race Track - traffic green - 6024 Marking paint for race tracks

TNS Race Track is a fast film-forming marking product based on acrylic resin with selected fillers in aqueous dispersion. It has been specially formulated and is used for marking asphalt tracks on road racing circuits.

MAP-6ML496922  
22 kg



Bild: MAPEI Austria

## TNS Race Track - traffic white 9016 Marking paint for race tracks

TNS Race Track is a fast film-forming marking product based on acrylic resin with selected fillers in aqueous dispersion. It has been specially formulated and is used for marking asphalt tracks on road racing circuits.

MAP-6ML497222  
22 kg



Bild: MAPEI Austria

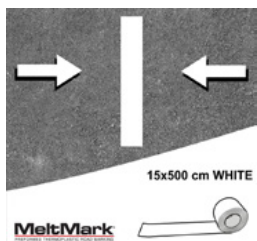
## TNS Race Track - traffic black - 9017 Marking paint for race tracks

TNS Race Track is a fast film-forming marking product based on acrylic resin with selected fillers in aqueous dispersion. It has been specially formulated and is used for marking asphalt tracks on road racing circuits.

MAP-6ML497322  
22 kg



# Prefabricated thermoplastics

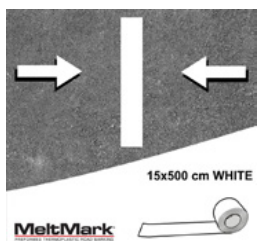


## MeltMark roll white 500 x 15 cm

Roll for line marking made of thermoplastic in the color orange  
Length: 500 cm  
width: 15 cm

MM\_RO500\_15\_ora

6 Stk.  
500 x 15 cm



## MeltMark roll white 500 x 15 cm

Roll for line marking made of thermoplastic in the color white  
Length: 500 cm  
Width: 15 cm

MM\_RO500\_15\_whi

6 Stk.  
500 x 15 cm



# AsphaltArt marking films



## Primer / adhesive primer for asphalt type films in 1 liter container

Special adhesion primer/primer in 1 liter container.  
For the application of asphalt type films.

ASA-3051.25.100

1 Stk.



## Hand roller K for the application of self-adhesive marking foils

Hand roller K for the safe and easy application of self-adhesive marking films

ASA-hawa\_k

**Width:** 50 mm  
with angled plastic handle

1 Stk.  
50 mm



## Hand roller L for the application of self-adhesive marking foils

Hand roller L for the safe and easy application of self-adhesive marking films

ASA-hawa\_l

**Width:** 200 mm  
with angled plastic handle

1 Stk.  
200 mm



## Hand roller M for the application of self-adhesive marking foils

Hand roller M for the safe and easy application of self-adhesive marking films

ASA-hawa\_m

**Width:** 150 mm  
with angled plastic handle

1 Stk.  
150 mm



## Large hand roller for the application of self-adhesive marking foils

Hand roller S for the safe and easy application of self-adhesive marking films

ASA-hawa\_s

**Width:** 100 mm  
with angled plastic handle

1 Stk.  
100 mm



## Handicapped parking space from self-adhesive marking foil, blue/white, 100 x 100 cm

Made from self-adhesive Asphalt-Art® floor marking film.  
For long-lasting durability, it is recommended to apply with primer.

ASA-ORI\_BeHi\_100\_100

**Size:** 100 x 100 cm

**Version:** self-adhesive, blue/white

1 Stk.  
100 x 100 cm



## Disabled parking space made of marking foil, blue/white, 100 x 140 cm

Made from self-adhesive Asphalt-Art® floor marking film.  
For long-lasting durability, it is recommended to apply with primer.

ASA-ORI\_BeHi\_100\_140

**Size:** 100 x 140 cm

**Version:** self-adhesive, blue/white

1 Stk.  
100 x 140 cm



# AsphaltArt marking films



## No stopping and parking sign made of marking foil, gray/blue/red, 100 x 100 cm

Made from self-adhesive Asphalt-Art® floor marking film. Apply with primer for long-lasting durability. ASA-ORI\_HP VQ\_100\_100

Size: 100 x 100 cm

Finish: self-adhesive, gray/red/blue

Cut to size: square 100 x 100 cm

1 Stk.  
100 x 100 cm



## No stopping and parking sign made of marking foil, blue/red, 100 x 100 cm round

Made from self-adhesive Asphalt-Art® floor marking film. Apply with primer for long-lasting durability. ASA-ORI\_HP VR\_100\_100

Size: 100 x 100 cm

Finish: self-adhesive, red/blue

Cut to size: round approx. 100 x 100 cm

1 Stk.  
100 x 100 cm



## Parking symbol made of marking film, blue/white, 100 x 100 cm

Made from self-adhesive Asphalt-Art® floor marking film. Apply with primer for long-lasting durability. ASA-ORI\_Par\_100\_100

Size: 100 x 100 cm

Finish: self-adhesive, blue/white

Cut to size: square 100 x 100 cm

1 Stk.  
100 x 100 cm



## No parking sign made of marking foil, gray/blue/red, 100 x 100 cm

Made from self-adhesive Asphalt-Art® floor marking film. Apply with primer for long-lasting durability. ASA-ORI\_PVQ\_100\_100

Size: 100 x 100 cm

Finish: self-adhesive, gray/red/blue

Cut to size: square 100 x 100 cm

1 Stk.  
100 x 100 cm



## No parking sign made of marking foil, blue/red, 100 x 100 cm round

Made from self-adhesive Asphalt-Art® floor marking film. Apply with primer for long-lasting durability. ASA-ORI\_PVR\_100\_100

Size : 100 x 100 cm

Finish: self-adhesive, red/blue

Cut to size: round approx. 100 x 100 cm

1 Stk.  
100 x 100 cm



## Stop made of marking foil, black/red/white, 100 x 100 cm

Made from self-adhesive Asphalt-Art® floor marking film. Apply with primer for long-lasting durability. ASA-ORI\_Stgr\_100\_100

Size: 100 x 100 cm

Design: self-adhesive, black/red/white

Cut to size: square 100 x 100 cm

1 Stk.  
100 x 100 cm



## Stop made of marking foil, black/red/white, 100 x 100 cm

Made from self-adhesive Asphalt-Art® floor marking film. Apply with primer for long-lasting durability. ASA-ORI\_Stop\_100\_100

Size: 100 x 100 cm

Finish: self-adhesive, black/red/white

Cut to size: 8-cornered cut

1 Stk.  
100 x 100 cm



# AsphaltArt marking films



## Squeegee for the application of self-adhesive marking films

Telon squeegee gold for easy and safe application of self-adhesive marking foils

ASA-Rakel

1 Stk.



# Marker buttons



## Road stud aluminium

Aluminum marking button  
**Material:** Aluminum  
**Weight:** 0.375 kg  
with shaft for insertion  $\varnothing$  20 mm L 50 mm

TEM-12011-MA  
0.375 kg  
1 Stk.  
100 x 100 x 21 mm



## Screw and dowel

For 14006MG and 14007MA  
Plastic dowel  $\varnothing$  8/14 mm  
Screw 100 mm long

TEM-13160-SC  
1 Stk.



## Screwnail

For all marking nails except 14006 and 14007

TEM-13161-SN  
0.02 kg  
1 Stk.  
105 mm



## Road stud yellow

Marker button yellow  
**Material:** PP  
**Weight:** 0.20 kg  
4 screw holes  
Without fastening material

TEM-14000-MG  
0.2 kg  
1 Stk.  
125 x 150 x 32 mm



## Road stud yellow

Marker button yellow  
**Material:** PP  
**Weight:** 0.17 kg  
4 screw holes  
without mounting material

TEM-14002-MG  
0.17 kg  
1 Stk.  
120 x 120 x 28 mm



## Road stud yellow

Marker button yellow  
**Material:** PP  
**Weight:** 0.24 kg  
4 screw holes  
without fixing material

TEM-14003-MG  
0.24 kg  
1 Stk.  
100 x 220 x 32 mm



## Road stud yellow

Marker button yellow  
**Material:** PP  
**Weight:** 0.12 kg  
4 screw holes  
without mounting material

TEM-14004-MG  
0.12 kg  
1 Stk.  
140 x 120 x 25 mm





# Marker buttons



## Road stud white

Marker button white  
**Material:** PP  
**Weight:** 0.12 kg  
4 screw holes  
Without fastening material

TEM-14004-MW  
0.12 kg  
1 Stk.  
140 x 120 x 25 mm



## Road stud yellow

Marker button yellow  
**Material:** ABS  
**Weight:** 0.11 kg  
2 screw holes  
without mounting material

TEM-14005-MG  
0.11 kg  
1 Stk.  
105 x 105 x 20 mm



## Road stud white

Marker button white  
**Material:** ABS  
**Weight:** 0.11 kg  
2 screw holes  
without mounting material

TEM-14005-MW  
0.11 kg  
1 Stk.  
105 x 105 x 20 mm



## Road stud yellow

Marker button yellow  
**Material:** PP  
**Weight:** 0.21 kg  
2 screw holes  
without mounting material

TEM-14006-MG  
0.21 kg  
1 Stk.  
120 x 220 x 28 mm



## Road stud aluminium

Aluminum marking button  
**Material:** Aluminum  
**Weight:** 0.30 kg  
2 screw holes  
without mounting material

TEM-14007-MA  
0.3 kg  
1 Stk.  
120 x 120 x 28 mm



# Construction site protection



Folding signals



Guiding cone



Warning lights



# Folding signals



**Triopan Standard (same on all three sides)**  
**Height: 70 cm - R1 Reflective**

Finish: R1 - Reflective  
Height: 70 cm

TRI-200-SO145392

All sides of the folding signal with the same imprint.

1 Stk.  
70 cm



**Triopan Standard (same on all three sides)**  
**Height: 60 cm - R1 Reflective**

Finish: R1 - Reflective  
Height: 60 cm

TRI-300.016

All sides of the folding signal with the same imprint.

1 Stk.  
60 cm



**Triopan Standard (same on all three sides)**  
**Height: 70 cm - R1 Reflective**

Finish: R1 - Reflective  
Height: 70 cm

TRI-300.017

All sides of the folding signal with the same imprint.

1 Stk.  
70 cm



**Triopan Standard (same on all three sides)**  
**Height: 90 cm - R1 Reflective**

Finish: R1 - Reflective  
Height: 90 cm

TRI-300.018

All sides of the folding signal with the same imprint.

1 Stk.  
90 cm



**Triopan Standard (same on all three sides)**  
**Height: 110 cm - R1 Reflective**

Finish: R1 - Reflective  
Height: 110 cm

TRI-300.019

All sides of the folding signal with the same imprint.

1 Stk.  
110 cm



**Triopan combination (sides printed differently)**  
**Height: 60 cm - R1 Reflective**

Finish: R1 - Reflective  
Height: 60 cm

TRI-300.036-60R1

All three sides can be printed with different symbols.

1 Stk.  
60 cm



**Triopan combination (sides printed differently)**  
**Height: 70 cm - R1 Reflective**

Finish: R1 - Reflective  
Height: 70 cm

TRI-300.037-60R1

All three sides can be printed with different symbols.

1 Stk.  
70 cm



# Folding signals



Triopan combination (sides printed differently)  
Height: 90 cm - R1 Reflective

Finish: R1 - Reflective  
Height: 90 cm

TRI-300.038-90R1

All three sides can be printed with different symbols.

1 Stk.  
90 cm



Triopan combination (sides printed differently)  
Height: 110 cm - R1 Reflective

Finish: R1 - Reflective  
Height: 110 cm

TRI-300.039-110R1

All three sides can be printed with different symbols.

1 Stk.  
110 cm



Triopan Standard (same on all three sides)  
Height: 90 cm - R2 Highly reflective

Finish: R2 - Highly reflective  
Height: 90 cm

TRI-310.357

All sides of the folding signal with the same imprint.

1 Stk.  
90 cm



Triopan combination (sides printed differently)  
Height: 90 cm - R2 Highly reflective

Finish: R2 - Highly reflective  
Height: 90 cm

TRI-310.359-90R2

All three sides can be printed with different symbols.

1 Stk.  
90 cm



Triopan Standard (same on all three sides)  
Height: 70 cm - R2 Highly reflective

Finish: R2 - Highly reflective  
Height: 70 cm

TRI-323.760

All sides of the folding signal with the same imprint.

1 Stk.  
70 cm



Triopan combination (sides printed differently)  
Height: 70 cm - R2 Highly reflective

Finish: R2 - Highly reflective  
Height: 70 cm

TRI-324.508-70R2

All three sides can be printed with different symbols.

1 Stk.  
70 cm



Triopan combination (sides printed differently)  
Height: 60 cm - R2 Highly reflective

Finish: R2 - Highly reflective  
Height: 60 cm

TRI-324.600-60R2

All three sides can be printed with different symbols.

1 Stk.  
60 cm



# Folding signals



**Triopan Standard (same on all three sides)**  
**Height: 60 cm - R2 Highly reflective**

Finish: R2 - Highly reflective  
 Height: 60 cm

TRI-325.511

All sides of the folding signal with the same imprint.

1 Stk.  
 60 cm



**Triopan Standard (same on all three sides)**  
**Height: 110 cm - R2 Highly reflective**

Finish: R2 - Highly reflective  
 Height: 110 cm

TRI-328.562

All sides of the folding signal with the same imprint.

1 Stk.  
 110 cm



**Triopan combination (sides printed differently)**  
**Height: 110 cm - R2 Highly reflective**

Finish: R2 - Highly reflective  
 Height: 110 cm

TRI-328.563-110R2

All three sides can be printed with different symbols.

1 Stk.  
 110 cm



**Triopan marking (same on all three sides)**  
**Height: 70 cm - R1 Reflective**

TRIOPAN folding signal Marking  
 Version: R1 - Reflective  
 Height: 70 cm

TRI-800.017

All sides of the folding signal with the imprint Marking.

1 Stk.  
 70 cm



**Triopan marking (same on all three sides)**  
**Height: 90 cm - R1 Reflective**

TRIOPAN folding signal Marking  
 Version: R1 - Reflective  
 Height: 90 cm

TRI-800.370

All sides of the folding signal with the imprint Marking.

1 Stk.  
 90 cm



**Triopan marking (same on all three sides)**  
**Height: 70 cm - Normal**

TRIOPAN folding signal Marking  
 Version: Normal - (non-reflective)  
 Height: 70 cm

TRI-800.650

All sides of the folding signal with the imprint Construction worker and text Marking below.

1 Stk.  
 70 cm



**Triopan Standard 60 cm normal version**

Finish: N - Non reflective  
 Height: 60 cm

TRI-STA-300.011-60N

All sides of the folding signal with the same imprint.  
 Version for daytime use with red fluorescent warning triangle. Range of use up to -35 degrees Celsius.

1 Stk.  
 60 cm

# Folding signals



## Triopan Standard 70 cm normal version

**Finish:** N - Non reflective  
**Height:** 70 cm

TRI-STA-300.012-70N

All sides of the folding signal with the same imprint.  
Version for daytime use with red fluorescent warning triangle. Range of use up to -35 degrees Celsius.

1 Stk.  
70 cm



## Triopan Standard 90 cm normal version

**Finish:** N - Non reflective  
**Height:** 90 cm

TRI-STA-300.013-90N

All sides of the folding signal with the same imprint.  
Version for daytime use with red fluorescent warning triangle. Range of use up to -35 degrees Celsius.

1 Stk.  
90 cm



## Triopan Standard 110 cm normal version

**Finish:** N - Non reflective  
**Height:** 110 cm

TRI-STA-300.014-110N

All sides of the folding signal with the same imprint.  
Version for daytime use with red fluorescent warning triangle. Range of use up to -35 degrees Celsius.

1 Stk.  
110 cm



## Triopan combi 60 cm normal version

**Finish:** N - Non reflective  
**Height:** 60 cm

TRI-STA-300.031-60N

All three sides can be printed with different symbols.  
Version for daytime use with red fluorescent warning triangle. Range of use up to -35 degrees Celsius.

1 Stk.  
60 cm



## Triopan combi 70 cm normal version

**Finish:** N - Non reflective  
**Height:** 70 cm

TRI-STA-300.032-70N

All three sides can be printed with different symbols.  
Version for daytime use with red fluorescent warning triangle. Range of use up to -35 degrees Celsius.

1 Stk.  
70 cm



## Triopan combi 90 cm normal version

**Finish:** N - Non reflective  
**Height:** 90 cm

TRI-STA-300.033-90N

All three sides can be printed with different symbols.  
Version for daytime use with red fluorescent warning triangle. Range of use up to -35 degrees Celsius.

1 Stk.  
90 cm



## Triopan combi 110 cm normal version

**Finish:** N - Non reflective  
**Height:** 110 cm

TRI-STA-300.034-110N

All three sides can be printed with different symbols.  
Version for daytime use with red fluorescent warning triangle. Range of use up to -35 degrees Celsius.

1 Stk.  
110 cm



# Guiding cone



## traffic cone daylight - height: 200 mm

Traffic cone daylight, red / white, height: 200 mm

SHA-3L200  
0.2 kg  
1 Stk.  
200 x 160 x 160 mm



## Guiding cone daylight - height: 320 mm

Traffic cone daylight, red / white, height: 320 mm

SHA-3L320  
0.5 kg  
1 Stk.  
320 x 227 x 227 mm



## traffic cone daylight - height: 500 mm

Traffic cone daylight, red / white, height: 500 mm

SHA-3L500  
1.2 kg  
1 Stk.  
500 x 300 x 300 mm



## traffic cone daylight - height: 500 mm

Traffic cone daylight, red / white reflective, height: 500 mm

SHA-3L500RS2  
1.3 kg  
1 Stk.  
500 x 300 x 300 mm



## Guide cone one-piece according to TL - height: 500 mm

Guide cone one-piece according to TL, foil type 1, height: 500 mm

SHA-3L500TL  
2.5 kg  
1 Stk.  
500 x 300 x 300 mm



## One-piece traffic cone according to TL - height: 500 mm - with 2 fully reflective strips of foil type RA2/B

Guiding cone BAST tested according to TL - one-piece  
made of strong PVC material  
good stability, stackable  
with 2 fully reflective strips of foil type RA2/B  
Color: red / white

SHA-3L500TL2  
2.5 kg  
1 Stk.  
500 x 300 x 300 mm



## Guide cone two-piece good stability, stackable, base plate made of recycled material, height: 500 mm, color foil rings: white

Height: 500 mm, color foil rings: white

SHA-3L530RS2  
5.24 kg  
1 Stk.  
500 x 300 x 300 mm

# Guiding cone



## Guiding cone in two parts according to TL with reflective foil jacket - height 500 mm - foil type 1

Guiding cone in two parts according to TL with reflective foil jacket, height: 500 mm, foil type 1

SHA-3L530TL  
2.7 kg  
1 Stk.  
500 x 300 x 300 mm



## Guiding cone in two parts according to TL with reflective foil jacket - height 500 mm

Guiding cone in two parts according to TL with reflective foil jacket, height: 500 mm, foil type 2

SHA-3L530TL2  
2.7 kg  
1 Stk.  
500 x 300 x 300 mm



## Guide cone two-piece good stability, stackable, base plate made of recycled material, height: 750 mm, color foil rings: white

Height: 750 mm, color foil rings: white

SHA-3L730RS2  
5.11 kg  
1 Stk.  
750 x 400 x 400 mm



## Guiding cone two-part according to TL with reflective foil jacket - height 750 mm - foil type 1

Guiding cone two-part according to TL with reflective foil jacket, height: 750 mm, foil type 1

SHA-3L730TL  
5.31 kg  
1 Stk.  
750 x 400 x 400 mm



## Guiding cone in two parts according to TL with reflective foil jacket - height 750 mm

Guiding cone in two parts according to TL with reflective foil jacket, height: 750 mm, foil type 2

SHA-3L730TL2  
5.31 kg  
1 Stk.  
750 x 400 x 400 mm



## traffic cone daylight - height: 750 mm

Traffic cone daylight, red / white, height: 750 mm

SHA-3L750  
3.2 kg  
1 Stk.  
750 x 400 x 400 mm



## traffic cone daylight - height: 750 mm

Traffic cone daylight, red / white reflective, height: 750 mm

SHA-3L750RS2  
3.3 kg  
1 Stk.  
750 x 400 x 400 mm





# Guiding cone



## Guide cone one-piece according to TL - height: 750 mm

Guide cone one-piece according to TL, foil type 1, height: 750 mm

SHA-3L750TL  
5 kg  
1 Stk.  
750 x 400 x 400 mm



## Guide cone one-piece according to TL - height: 750 mm

Guide cone one-piece according to TL, foil type 2, height: 750 mm

SHA-3L750TL2  
5 kg  
1 Stk.  
750 x 400 x 400 mm



## Traffic cone 320 mm

PVC, 320 mm, 0,64 kg  
retroreflective foil  
class RA 2

TEM-12903 ER  
0.84 kg  
1 Stk.



## Traffic cone 500 mm

PVC, 500 mm, 1,30 kg  
retroreflective foil  
class RA 2

TEM-12906 ZR  
1.3 kg  
1 Stk.



## Traffic cone 750 mm

PVC, 750 mm, 3,20 kg  
retroreflective foil  
class RA 2

TEM-12909 ZR  
3.2 kg  
1 Stk.



# Warning lights



## Construction site warning light - orange optics

Construction site warning light  
Yellow optics

SHA-31211G  
6 kg  
1 Stk.  
5.000 x 47 x 47 mm



## Construction site warning light - red optics

Construction site warning light  
Red optics

SHA-31211R  
1.1 kg  
1 Stk.  
350 x 180 x 80 mm



## TL beacon light PowerNox, BAST tested, light emission one-sided, yellow

TL beacon light PowerNox  
BAST tested  
light emission one-sided  
yellow optics

SHA-33NOXG1  
0.9 kg  
1 Stk.  
290 x 260 x 80 mm



## TL beacon light PowerNox, BAST tested, light emission double-sided, yellow

TL beacon light PowerNox  
BAST tested  
light emission double-sided  
yellow optics

SHA-33NOXG2  
0.9 kg  
1 Stk.  
290 x 260 x 80 mm



## TL beacon light PowerNox, BAST tested, light emission one-sided, red

TL beacon light PowerNox  
BAST tested  
light emission one-sided  
red optics

SHA-33NOXR1  
0.9 kg  
1 Stk.  
290 x 260 x 80 mm



## TL beacon light PowerNox, BAST tested, light emission double-sided, red

TL beacon light PowerNox  
BAST tested  
light emission double-sided  
red optics

SHA-33NOXR2  
0.9 kg  
1 Stk.  
290 x 260 x 80 mm

Kein Bild verfügbar!

Bitte beachten Sie die  
Dokumente unter  
Downloads / Pdf Docs

No picture available!

Please have a look for the  
documents you will find under  
Downloads / Pdf Docs

## Triopan Fireball yellow

**Functions:** Single flash  
**Technical data:** Luminous intensity 280 cd,  
**Light color:** Yellow  
**Flash rate:** 60 blinks/min.  
**Operating time with battery equipment at 20 degrees and 6 AA batteries:**  
Single flash approx. 45 hours

TRI-329.921



# Warning lights



## Triopan Fireball yellow

**Functions:** Single flash  
**Technical data:** Luminous intensity 280 cd,  
**Light color:** Yellow  
**Flash rate:** 60 blinks/min.  
**Operating time with battery equipment at 20 degrees and 6 AA batteries:**  
Single flash approx. 45 hours

TRI-760.000



## Triopan Fireball green

**Functions:** Single flash  
**Technical data:** Luminous intensity 280 cd,  
**Light color:** Green  
**Flash rate:** 60 blinks/min.  
**Operating time with battery equipment at 20 degrees and 6 AA batteries:**  
Single flash approx. 45 hours

TRI-760.022



## Triopan Fireball blue

**Functions:** Single flash  
**Technical data:** Luminous intensity 280 cd,  
**Light color:** Blue  
**Flash rate:** 60 blinks/min.  
**Operating time with battery equipment at 20 degrees and 6 AA batteries:**  
Single flash approx. 45 hours

TRI-760.033



## Triopan Helios Master yellow 2-sided

**Functions:** Single, double and triple flash  
Double battery housing (without holder), large bracket, super LED with extremely high energy efficiency and service life, no bulb replacement  
Light intensity 270 cd, light color yellow, flash rate 60 flashes/min.

TRI-777.784



## Triopan Helios Master green 2-sided

**Functions:** Single, double and triple flash  
Double battery housing (without holder), large bracket, super LED with extremely high energy efficiency and service life, no bulb replacement  
Light intensity 270 cd, light color green, flash rate 60 flashes/min.

TRI-777.791



## Triopan Helios Master red 2-sided

**Functions:** Single, double and triple flash  
Double battery housing (without holder), large bracket, super LED with extremely high energy efficiency and service life, no bulb replacement  
Light intensity 270 cd, light color red, flash rate 60 flashes/min.

TRI-777.793



## Triopan Helios Master blue 2-sided

**Functions:** Single, double and triple flash  
Double battery housing (without holder), large bracket, super LED with extremely high energy efficiency and service life, no bulb replacement  
Light intensity 270 cd, light color yellow, flash rate 60 flashes/min.

TRI-777.795



# Warning lights



## Triopan Helios Master red/white 2-sided

**Functions:** Single, double and triple flash  
Double battery housing (without holder), large bracket, super LED with extremely high energy efficiency and service life, no bulb replacement  
Light intensity 270 cd, light color red, flash rate 60 flashes/min.

TRI-777.797



## Triopan Helios Master white 2-sided

**Functions:** Single, double and triple flash  
Double battery housing (without holder), large bracket, super LED with extremely high energy efficiency and service life, no bulb replacement  
Light intensity 270 cd, light color yellow, flash rate 60 flashes/min.

TRI-777.799



## Triopan Helios Master RF yellow 2-seitig, so outside switch

**Functions:-** Single, double and triple flash  
- Backlight  
- Build-up light, running light, flash storm/random generator

Light intensity 350 cd, light color yellow, flash rate 60 flash/min.

TRI-777.801



## Triopan Helios Master yellow/red 2-sided

**Functions:** Single, double and triple flash  
Double battery housing (without holder), large bracket, super LED with extremely high energy efficiency and service life, no bulb replacement  
Light intensity 270 cd, light color yellow/red, flash rate 60 flashes/min.

TRI-777.805



## Triopan Fireball red

**Functions:** Single flash  
**Technical data:** Luminous intensity 280 cd,  
**Light color:** Red  
**Flash rate:** 60 blinks/min.  
**Operating time with battery equipment at 20 degrees and 6 AA batteries:**  
Single flash approx. 45 hours

TRI-777.901



# Photovoltaic LED



## Solar Vision 01

Ideally suited for mounting on concrete barriers or masonry on the road. Increases safety many times over in fog, rain or darkness. Surface-mounted solar LED - polycarbonate housing - can only be driven over with restrictions

STE-04-1110-010  
10 Stk.



## Solar Vision 02

A solar marker that must be installed in the surface by drilling a hole in the surface. Suitable for driving over, depending on the different type of modular housing. Recessed solar LED - polycarbonate housing - can be driven over with average traffic load

STE-04-2110-010  
330 g  
6 Stk.  
128 x 128 x 32 mm



## Solar Vision 02 Regular (rvs ring)

A solar marker that must be installed in the surface by drilling a hole in the surface. Suitable for driving over, depending on the different type of modular housing. Recessed solar LED - polycarbonate housing - can be driven over with average traffic load

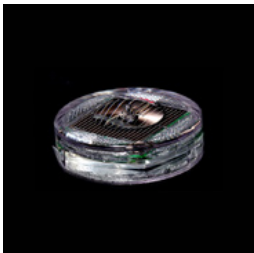
STE-04-2120-010  
415 g  
6 Stk.  
128 x 128 x 32 mm



## Solar Vision 02 Regular (rvs ring)

A solar marker that must be installed in the surface by drilling a hole in the surface. Suitable for driving over, depending on the different type of modular housing. Recessed solar LED - polycarbonate housing - can be driven over with average traffic load

STE-04-2130-010  
900 g  
6 Stk.  
156 x 156 x 35 mm



## Solar Vision 03

A solar marker for installation in elements and sidewalks or in places where it does not come into contact with heavy traffic. Recessed solar LED - polycarbonate housing - can be driven over with average traffic load

STE-04-3110-10  
155 g  
10 Stk.  
84 x 84 x 25 mm



## Solar Vision 03 with mounting tray

A solar marker for installation in elements and sidewalks or in places where it does not come into contact with heavy traffic. Recessed solar LED - polycarbonate housing - can be driven over with average traffic load

STE-04-3910-10  
205 g  
10 Stk.  
84 x 84 x 25 mm



## Solar Vision 04

A solar marker for installation in elements and sidewalks or in places where it does not come into contact with heavy traffic. Recessed solar LED - polycarbonate housing - can be driven over with average traffic load

STE-04-4110-10  
175 g  
10 Stk.  
84 x 84 x 25 mm



## Photovoltaic LED



### Solar Vision 04 with mounting tray

A solar marker for installation in elements and sidewalks or in places where it does not come into contact with heavy traffic.  
Recessed solar LED - polycarbonate housing - can be driven over with average traffic load

STE-4-4910-010  
225 g  
10 Stk.  
84 x 84 x 25 mm



# Lane markings Visibility signs



## Sight sign large, orange

Visual sign for the demarcation of roadways.

260 x 160 x 600 mm  
PP-PE, 0,84 kg

TEM-14206-GG  
0.84 kg  
1 Stk.  
260 x 160 x 600 mm



## Visible sign small, orange

Visual sign for the demarcation of roadways.

260 x 160 x 280 mm  
PP-PE, 0,70 kg

TEM-14207-KR  
0.7 kg  
1 Stk.  
260 x 160 x 280 mm



# Leitschwellen



## Guide threshold yellow

Roadway speed bump made of PP. For separating road surfaces that are not to be driven on.

Without fastening material

TEM-14202-SO  
2.4 kg  
1 Stk.  
1.170 x 50 x 50 mm



## Threshold white

Roadway speed bump made of PP. For separating road surfaces that are not to be driven on.

Without fastening material

TEM-14202-SW  
2.4 kg  
1 Stk.  
1.170 x 50 x 50 mm



## Guiding threshold rubber

Rubber speed bump. For separating road surfaces not to be driven on.

Without fastening material

TEM-14260-UN  
5.5 kg  
1 Stk.  
1.000 x 150 x 60 mm





# Flexipfosten

## Screw eyelet made of PP



Polypropylene screw eyelet  
with M 36 thread

TEM-13174-HS

1 Stk.

## Adapter for Flexipfosten® black



Adapter made of PP for diameter 80 mm  
with M 36 thread

TEM-13194-AD

1 Stk.

## Fixing set for Flexipfosten®



TEM-13359-S3

1 Stk.

## Set key screw with dowel 10/18 mm



Set of 3 key screws for fastening.  
Three screws with three dowels 10/18 mm

TEM-13359-SZ

0.08 kg

3 Stk.

## Flexible shut-off post orange 1000 mm with reflective stripes



The Flexipost® is a self-erecting barrier post made of extremely robust polyurethane. These posts are elastic like rubber when hit or rolled over.

TEM-14211-FP

1.84 kg

1 Stk.

1.000 mm

## Flexible shut-off post orange 750 mm with reflective stripes



The Flexipost® is a self-erecting barrier post made of extremely robust polyurethane. These posts are elastic like rubber when hit or rolled over.

TEM-14212-FP

1.32 kg

1 Stk.

750 mm

## Flexible shut-off post orange 450 mm with reflective stripes



The Flexipost® is a self-erecting barrier post made of extremely robust polyurethane. These posts are elastic like rubber when hit or rolled over.

TEM-14214-FP

0.93 kg

1 Stk.

450 mm



# Flexipfosten

## Flexible shut-off post orange 300 mm with reflective stripes



The Flexipost® is a self-erecting barrier post made of extremely robust polyurethane. These posts are elastic like rubber when hit or rolled over.

TEM-14215-FP  
0.69 kg  
1 Stk.  
300 mm

## Flexible shut-off post black 1000 mm with reflective stripes in yellow



The Flexipost® is a self-erecting barrier post made of extremely robust polyurethane. These posts are elastic like rubber when hit or rolled over.

TEM-14221-SG  
1.84 kg  
1 Stk.  
1.000 mm

## Flexible shut-off post black 1000 mm with reflective stripes



The Flexipost® is a self-erecting barrier post made of extremely robust polyurethane. These posts are elastic like rubber when hit or rolled over.

TEM-14221-SS  
1.84 kg  
1 Stk.  
1.000 mm

## Flexible shut-off post black 750 mm with reflective stripes in yellow



The Flexipost® is a self-erecting barrier post made of extremely robust polyurethane. These posts are elastic like rubber when hit or rolled over.

TEM-14222-SG  
1.32 kg  
1 Stk.  
750 mm

## Flexible shut-off post black 750 mm with reflective stripes



The Flexipost® is a self-erecting barrier post made of extremely robust polyurethane. These posts are elastic like rubber when hit or rolled over.

TEM-14222-SS  
1.32 kg  
1 Stk.  
750 mm

## Flexipost® yellow 1000 mm with reflective strips



The Flexipost® is a self-erecting barrier post made of extremely robust polyurethane. These posts are elastic like rubber when hit or rolled over.

TEM-14241-FP  
1.84 kg  
1 Stk.  
1.000 mm

## Flexible shut-off post orange 1000 mm with black stripes



The Flexipost® is a self-erecting barrier post made of extremely robust polyurethane. These posts are elastic like rubber when hit or rolled over.

TEM-14241-GS  
1.84 kg  
1 Stk.  
1.000 mm



# Flexipfosten

## Flexible shut-off post orange 750 mm with reflective stripes



The Flexipost® is a self-erecting barrier post made of extremely robust polyurethane. These posts are elastic like rubber when hit or rolled over.

TEM-14242-FP  
1.32 kg  
1 Stk.  
750 mm

## Flexible shut-off post orange 750 mm with black stripes



The Flexipost® is a self-erecting barrier post made of extremely robust polyurethane. These posts are elastic like rubber when hit or rolled over.

TEM-14242-GS  
1.32 kg  
1 Stk.  
750 mm

## Flexible shut-off post orange 450 mm with reflective stripes



The Flexipost® is a self-erecting barrier post made of extremely robust polyurethane. These posts are elastic like rubber when hit or rolled over.

TEM-14244-FP  
0.93 kg  
1 Stk.  
450 mm

## Flexible shut-off post orange 450 mm with black stripes



The Flexipost® is a self-erecting barrier post made of extremely robust polyurethane. These posts are elastic like rubber when hit or rolled over.

TEM-14244-GS  
0.93 kg  
1 Stk.  
450 mm

## Flexible shut-off post orange 300 mm with reflective stripes



The Flexipost® is a self-erecting barrier post made of extremely robust polyurethane. These posts are elastic like rubber when hit or rolled over.

TEM-14245-FP  
0.69 kg  
1 Stk.  
300 mm

## Flexible shut-off post orange 300 mm with black stripes



The Flexipost® is a self-erecting barrier post made of extremely robust polyurethane. These posts are elastic like rubber when hit or rolled over.

TEM-14245-GS  
0.69 kg  
1 Stk.  
300 mm

## Flexible shut-off post black 300 mm with reflective stripes in yellow



The Flexipost® is a self-erecting barrier post made of extremely robust polyurethane. These posts are elastic like rubber when hit or rolled over.

TEM-14282-SG  
0.69 kg  
1 Stk.  
300 mm



# Flexipfosten

## Flexible shut-off post black 300 mm with reflective stripes



The Flexipost® is a self-erecting barrier post made of extremely robust polyurethane. These posts are elastic like rubber when hit or rolled over.

TEM-14282-SS  
0.69 kg  
1 Stk.  
300 mm

## Flexible shut-off post black 450 mm with reflective stripes in yellow



The Flexipost® is a self-erecting barrier post made of extremely robust polyurethane. These posts are elastic like rubber when hit or rolled over.

TEM-14284-SG  
0.93 kg  
1 Stk.  
450 mm

## Flexible shut-off post black 450 mm with reflective stripes



The Flexipost® is a self-erecting barrier post made of extremely robust polyurethane. These posts are elastic like rubber when hit or rolled over.

TEM-14284-SS  
0.93 kg  
1 Stk.  
450 mm

## Flexible shut-off post white 1000 mm with blue reflective stripes



The Flexipost® is a self-erecting barrier post made of extremely robust polyurethane. These posts are elastic like rubber when hit or rolled over.

TEM-14931-BW  
1.48 kg  
1 Stk.  
1.000 mm

## Flexible shut-off post white 1000 mm with red reflective stripes



The Flexipost® is a self-erecting barrier post made of extremely robust polyurethane. These posts are elastic like rubber when hit or rolled over.

TEM-14931-UV  
1.48 kg  
1 Stk.  
1.000 mm

## Flexible shut-off post white 750 mm with blue reflective stripes



The Flexipost® is a self-erecting barrier post made of extremely robust polyurethane. These posts are elastic like rubber when hit or rolled over.

TEM-14932-BW  
1.32 kg  
1 Stk.  
750 mm

## Flexible shut-off post white 750 mm with red reflective stripes



The Flexipost® is a self-erecting barrier post made of extremely robust polyurethane. These posts are elastic like rubber when hit or rolled over.

TEM-14932-UV  
1.32 kg  
1 Stk.  
750 mm



# Flexipfosten

## Flexible shut-off post white 450 mm with blue reflective stripes



The Flexipost® is a self-erecting barrier post made of extremely robust polyurethane. These posts are elastic like rubber when hit or rolled over.

TEM-14934-BW  
0.93 kg  
1 Stk.  
450 mm

## Flexible shut-off post white 450 mm with red reflective stripes



The Flexipost® is a self-erecting barrier post made of extremely robust polyurethane. These posts are elastic like rubber when hit or rolled over.

TEM-14934-UV  
0.93 kg  
1 Stk.  
450 mm

## Flexible shut-off post white 300 mm with blue reflective stripes



The Flexipost® is a self-erecting barrier post made of extremely robust polyurethane. These posts are elastic like rubber when hit or rolled over.

TEM-14935-BW  
0.69 kg  
1 Stk.  
300 mm

## Flexible shut-off post white 300 mm with red reflective stripes



The Flexipost® is a self-erecting barrier post made of extremely robust polyurethane. These posts are elastic like rubber when hit or rolled over.

TEM-14935-UV  
0.69 kg  
1 Stk.  
300 mm



# Flexible Verkehrspoller



## Flexible city bollard anthracite

Design bollards for inner-city areas. Also available with your city or municipal coat of arms / logo.

**Color:** Olive green

**Material:** Plastic Plastic

**Mounting material:** Aluminum ground socket - PZ 1

ELB\_03.03.0519

1 Stk.  
800 mm



## Flexible pencil bollard - yellow

Ideal for schools and kindergartens.

**Color:** Yellow

**Material:** Plastic

**Mounting material:** Aluminum ground socket - PZ 1

ELB-03.03.0472

1 Stk.  
1.000 mm



## Flexible pencil bollard - blue

Ideal for schools and kindergartens.

**Color:** blue

**Material:** blue Plastic

**Mounting material:** Aluminum ground socket - PZ 1

ELB-03.03.0473

1 Stk.  
1.000 mm



## Flexible pencil bollard - green

Ideal for schools and kindergartens.

**Color:** green

**Material:** Plastic

**Mounting material:** Aluminum ground socket - PZ 1

ELB-03.03.0474

1 Stk.  
1.000 mm



## Flexible pencil bollard - green

Ideal for schools and kindergartens.

**Color:** red

**Material:** red Plastic

**Mounting material:** Aluminum ground socket - PZ 1

ELB-03.03.0475

1 Stk.  
1.000 mm



## Flexible bollard Bernd orange with white stripes - 1000 mm

Flexible bollard with a diameter of 80 mm for a wide range of applications, with white foil reflectors and glass bead reflectors.

**Color:** Orange

**Material:** Orange Plastic

**Mounting material:** Aluminum ground socket - PZ 1

ELB-03.03.0476

1.65 kg  
4 Stk.  
1.000 mm



## Flexible bollard BERND green with white stripes - 1000 mm

Flexible bollard with a diameter of 80 mm for a wide range of applications, with white foil reflectors and glass bead reflectors.

**Color:** Green

**Material:** Green Plastic

**Mounting material:** Aluminum ground socket - PZ 1

ELB-03.03.0478

1.65 kg  
4 Stk.  
1.000 mm



# Flexible Verkehrspoller



## Flexible bollard BERND white with blue stripes - 1000 mm

Flexible bollard with a diameter of 80 mm for a wide range of applications, with blue foil reflectors and glass bead reflectors.

**Color:** White

**Material:** White Plastic

**Mounting material:** Aluminum ground socket - PZ 1

ELB-03.03.0482  
1.65 kg  
4 Stk.  
1.000 mm



## Flexible bollard SUMO orange with white stripes

Flexible bollard with a large diameter of 130 mm for a wide range of applications, with white foil reflectors and glass bead reflectors.

**Color:** Orange

**Material:** Orange Plastic

**Mounting material:** Aluminum ground socket - PZ 1

ELB-03.03.0510  
1 Stk.  
800 mm



## Flexible bollard SUMO green with white stripes

Flexible bollard with a large diameter of 130 mm for a wide range of applications, with white foil reflectors and glass bead reflectors.

**Color:** Green

**Material:** Green Plastic

**Mounting material:** Aluminum ground socket - PZ 1

ELB-03.03.0512  
1 Stk.  
800 mm



## Flexible bollard SUMO black with white stripes

Flexible bollard with a large diameter of 130 mm for a wide range of applications, with white foil reflectors and glass bead reflectors.

**Color:** Black

**Material:** Black Plastic

**Mounting material:** Aluminum ground socket - PZ 1

ELB-03.03.0513  
1 Stk.  
800 mm



## Flexible bollard SUMO yellow with white stripes

Flexible bollard with a large diameter of 130 mm for a wide range of applications, with white foil reflectors and glass bead reflectors.

**Color:** Yellow

**Material:** Plastic

**Mounting material:** Aluminum ground socket - PZ 1

ELB-03.03.0515  
1 Stk.  
800 mm



## Flexible city bollard anthracite

Elegant city design for inner-city areas. With retroreflective foil and glass bead reflectors.

**Color:** Anthracite

**Material:** Plastic Plastic

**Mounting material:** Aluminum ground socket - PZ 1

ELB-03.03.0518  
1 Stk.  
800 mm



## Aluminum ground socket

For attaching flexible traffic bollards.

**Height:** 100 mm

**Diameter:** 22 mm

ELB-03.03.0520  
1 Stk.  
100 mm



# Flexible Verkehrspoller



## M16 steel ground socket

For attaching flexible traffic bollards.

ELB-03.03.0521

**Height:** 130 mm  
**Diameter:** 28 mm

1 Stk.  
130 mm



## Ground socket for aluminum bollards

For mounting flexible traffic bollards.

ELB-03.03.0522

[b | Material:[b/] Steel

1 Stk.



## Ground socket for aluminum bollards

For attaching flexible traffic bollards.

ELB-03.03.0523

**Height:** 70 mm  
**Diameter:** 50 mm

1 Stk.  
70 mm



## Flexible bollard BERND white with red stripes - 1000 mm

Flexible bollard with a diameter of 80 mm for a wide range of applications, with red foil reflectors and glass bead reflectors.

ELB-03.03.0528

**Color:** White

1.65 kg

**Material:** White Plastic

4 Stk.

**Mounting material:** Aluminum ground socket - PZ 1

1.000 mm





# Workshop and warehouse



## Cleaning station Clean Tower Flexi red

The CleanTower Flexi is ideal for all areas where different cleaning accessories are required.  
Includes broom, dustpan and hand brush,  
5 holes in the base plate for floor fixings or castors.

MYL-10001043  
25 kg  
1 Stk.  
40 x 190 cm



## Cleaning station Clean Tower Flexi black

The CleanTower Flexi is ideal for all areas where different cleaning accessories are required.  
Includes broom, dustpan and hand brush,  
5 holes in the base plate for floor fixings or castors.

MYL-10001044  
25 kg  
1 Stk.  
40 x 190 cm



## Cleaning station Clean Tower Flexi silver

The CleanTower Flexi is ideal for all areas where different cleaning accessories are required.  
Includes broom, dustpan and hand brush,  
5 holes in the base plate for floor fixings or castors.

MYL-10001045  
25 kg  
1 Stk.  
40 x 190 cm



## Cleaning station Clean Tower Flexi yellow

The CleanTower Flexi is ideal for all areas where different cleaning accessories are required.  
Includes broom, dustpan and hand brush,  
5 holes in the base plate for floor fixings or castors.

MYL-10001046  
25 kg  
1 Stk.  
40 x 190 cm



## Safety clothing



jackets



Pants



T-shirts and sweatshirts



# jackets



## REFLECTIQ High-Vis work jacket PSA 2 - warning yellow/anthracite

- with EasyBrand function thanks to certified finishing option on the back
- Contrasting elements: side inserts on front and back, back, front and sleeve hems, upper arm insert
- Zippers and press studs: black for all color combinations
- Reflective elements: on the upper arm, reflective look in Body Language (5 cm wide) running vertically over the shoulder, 1 reflective stripe on the torso and 2 reflective stripes on each sleeve all the way round

KUB\_1207 8340-3497

1 Stk.



## REFLECTIQ High-Vis work jacket PSA 2 - warning orange/dark blue

- with body-hugging cut
- with EasyBrand chest pocket - for easier customization
- Contrasting elements: hem area on torso and sleeves, front and back yoke, CORDURA® reinforcements
- Stretch: Black color for all color combinations

KUB\_1207 8340-3748

1 Stk.



## REFLECTIQ High-Vis work jacket PSA 2 - warning orange/anthracite

- with EasyBrand function thanks to certified finishing option on the back
- Contrasting elements: side inserts on front and back, back, front and sleeve hems, upper arm insert
- Zippers and press studs: black for all color combinations
- Reflective elements: on the upper arm, reflective look in Body Language (5 cm wide) running vertically over the shoulder, 1 reflective stripe on the torso and 2 reflective stripes on each sleeve all the way round

KUB\_1207 8340-3797

1 Stk.



## REFLECTIQ High-Vis work jacket PSA 2 - warning red/anthracite

- with body-hugging cut
- with EasyBrand chest pocket - for easier customization
- Contrasting elements: hem area on torso and sleeves, front and back yoke, CORDURA® reinforcements
- Stretch: Black color for all color combinations

KUB\_1207 8341-5499

1 Stk.



## REFLECTIQ High-Vis weather jacket Sympatex® PSA 2 - warning yellow/anthracite

- with body-hugging cut
- Contrasting elements: In the hem area on the torso and sleeves, front and back yoke, inner collar, CORDURA® reinforcements, volume pleat on chest pocket
- Pocket flaps are reinforced with black ribbed tape

KUB\_1307 8332-3497

1 Stk.



## REFLECTIQ High-Vis weather jacket Sympatex® PSA 2 - warning orange/dark blue

- with body-hugging cut
- Contrasting elements: In the hem area on the torso and sleeves, front and back yoke, inner collar, CORDURA® reinforcements, volume pleat on chest pocket
- Pocket flaps are reinforced with black ribbed tape

KUB\_1307 8332-3748

1 Stk.



# jackets



## REFLECTIQ High-Vis weather jacket Sympatex® PSA 2 - warning orange/anthracite

- with body-hugging cut
- Contrasting elements: In the hem area on the torso and sleeves, front and back yoke, inner collar, CORDURA® reinforcements, volume pleat on chest pocket
- Pocket flaps are reinforced with black ribbed tape

KUB\_1307 8332-3797

1 Stk.



## REFLECTIQ High-Vis hardshell jacket PSA 2 - warning yellow/anthracite

- Modern look thanks to ripstop Oxford fabric
- Contrasting elements: lower front and back sections, shoulder and sleeve inserts
- Reflective elements: reflective look in body language, reflective stripes around torso (5 cm wide),

KUB\_1327 82313-3497

1 Stk.



## REFLECTIQ High-Vis hardshell jacket PSA 2 - warning orange/dark blue

- Modern look thanks to ripstop Oxford fabric
- Contrasting elements: lower front and back sections, shoulder and sleeve inserts
- Reflective elements: reflective look in body language, reflective stripes around torso (5 cm wide),

KUB\_1327 8231-3748

1 Stk.



## REFLECTIQ High-Vis hardshell jacket PSA 2 - warning orange/anthracite

- Modern look thanks to ripstop Oxford fabric
- Contrasting elements: lower front and back sections, shoulder and sleeve inserts
- Reflective elements: reflective look in body language, reflective stripes around torso (5 cm wide),

KUB\_1327 8231-3797

1 Stk.



## REFLECTIQ High-Vis work jacket ARC1 PSA 3 - warning yellow/anthracite

- with EasyBrand function thanks to certified finishing option on the back
- Contrasting elements: side inserts on front and back, back, front and sleeve hems, upper arm insert
- Zippers and press studs: black for all color combinations
- Reflective elements: on the upper arm, reflective look in Body Language (5 cm wide) running vertically over the shoulder, 1 reflective stripe on the torso and 2 reflective stripes on each sleeve all the way round

KUB\_1393 8345-3497

1 Stk.



## REFLECTIQ High-Vis work jacket ARC1 PSA 3 - warning orange/anthracite

- with EasyBrand function thanks to certified finishing option on the back
- Contrasting elements: side inserts on front and back, back, front and sleeve hems, upper arm insert
- Zippers and press studs: black for all color combinations
- Reflective elements: on the upper arm, reflective look in Body Language (5 cm wide) running vertically over the shoulder, 1 reflective stripe on the torso and 2 reflective stripes on each sleeve all the way round

KUB\_1393 8345-3797

1 Stk.



## REFLECTIQ High-Vis work jacket ARC2 PSA 3 - warning yellow/anthracite

- with EasyBrand function thanks to certified decoration option on the back
- The inner lining is mottled gray
- Contrasting elements: side inserts on the front and back, back, front and sleeve hems, upper arm insert
- Zippers and press studs: black for all color combinations

KUB\_1394 8420-3497

1 Stk.



# jackets



## REFLECTIQ High-Vis work jacket ARC2 PSA 3 - warning orange/anthracite

- with EasyBrand function thanks to certified decoration option on the back
- The inner lining is mottled gray
- Contrasting elements: side inserts on the front and back, back, front and sleeve hems, upper arm insert
- Zippers and press studs: black for all color combinations

KUB\_1394 8420-3797

1 Stk.



## REFLECTIQ High-Vis fleece jacket PSA 2 - warning yellow

- with body-hugging cut
- Reflective elements: reflective look in body language, 2 reflective stripes around the torso and sleeves, additional reflective stripes over the shoulder and on the chest and upper back (5 cm wide)

KUB\_1407 8339-34

1 Stk.



## REFLECTIQ High-Vis fleece jacket PSA 2 - warning orange

- with body-hugging cut
- Reflective elements: reflective look in body language, 2 reflective stripes around the torso and sleeves, additional reflective stripes over the shoulder and on the chest and upper back (5 cm wide)

KUB\_1407 8339-37

1 Stk.



## REFLECTIQ High-Vis fleece jacket PSA 2 - warning red

- with body-hugging cut
- Reflective elements: reflective look in body language, 2 reflective stripes around the torso and sleeves, additional reflective stripes over the shoulder and on the chest and upper back (5 cm wide)

KUB\_1407 8339-54

1 Stk.



## REFLECTIQ High-Vis ladies jacket ARC1 PSA 3 - warning yellow/anthracite

- Tailored cut
- EasyBrand function thanks to certified finishing option on the back
- Contrasting elements: side inserts on front and back, back, front and sleeve hems, upper arm insert
- Zippers and press studs: black for all color combinations
- Reflective elements: on the upper arm, reflective look in body language (5 cm wide) running vertically over the shoulder, 1 reflective stripe on the

KUB\_1493 8345-3497

1 Stk.



## REFLECTIQ High-Vis ladies jacket ARC1 PSA 3 - warning orange/anthracite

- Tailored cut
- EasyBrand function thanks to certified finishing option on the back
- Contrasting elements: side inserts on front and back, back, front and sleeve hems, upper arm insert
- Zippers and press studs: black for all color combinations
- Reflective elements: on the upper arm, reflective look in body language (5 cm wide) running vertically over the shoulder, 1 reflective stripe on the

KUB\_1493 8345-3797

1 Stk.



## REFLECTIQ High-Vis ladies jacket ARC2 PSA 3 - warning yellow/anthracite

- Tailored cut
- EasyBrand function thanks to certified decoration option on the back
- The inner lining is mottled gray
- Contrasting elements: side inserts on the front and back, back, front and sleeve hems, upper arm insert

KUB\_1494 8420-3497

1 Stk.

# jackets



## REFLECTIQ High-Vis ladies jacket ARC2 PSA 3 - warning orange/anthracite

- Tailored cut
- EasyBrand function thanks to certified finishing option on the back
- Contrasting elements: side inserts on front and back, back, front and sleeve hems, upper arm insert
- Zippers and press studs: black for all color combinations
- Reflective elements: on the upper arm, reflective look in body language (5 cm wide) running vertically over the shoulder, 1 reflective stripe on the

KUB\_1494 8420-3797

1 Stk.



## REFLECTIQ High-Vis softshell jacket PSA 2 - warning yellow/anthracite

- with body-hugging cut
- Contrasting elements: hem area on torso and sleeves, front and back yoke, inner collar, CORDURA® reinforcements
- Stretch: Black color for all color combinations

KUB\_1507 8427-3448

1 Stk.



## REFLECTIQ High-Vis softshell jacket PSA 2 - warning orange/dark blue

- with body-hugging cut
- Contrasting elements: hem area on torso and sleeves, front and back yoke, inner collar, CORDURA® reinforcements
- Stretch: Black color for all color combinations

KUB\_1507 8427-3748

1 Stk.



## REFLECTIQ High-Vis softshell jacket PSA 2 - warning orange/anthracite

- with body-hugging cut
- Contrasting elements: hem area on torso and sleeves, front and back yoke, inner collar, CORDURA® reinforcements
- Stretch: Black color for all color combinations

KUB\_1507 8427-3797

1 Stk.



## REFLECTIQ High-Vis women's softshell jacket PSA 2 - warning yellow/anthracite

- Tailored cut
- Stretch: Black color for all color positions
- Reflective elements: reflective look in body language, segmented and full-length reflective tape combined, 2 reflective strips around the torso and sleeves, additional reflective strips over the shoulder and on the chest and upper back (5 cm wide)

KUB\_1509 8427-34

1 Stk.



## REFLECTIQ High-Vis women's softshell jacket PSA 2 - warning orange/anthracite

- Tailored cut
- Stretch: Black color for all color positions
- Reflective elements: reflective look in body language, segmented and full-length reflective tape combined, 2 reflective strips around the torso and sleeves, additional reflective strips over the shoulder and on the chest and upper back (5 cm wide)

KUB\_1509 8427-37

1 Stk.



# jackets



## SAFETY 7 High-Vis work jacket PSA 3 - warning yellow/anthracite

- Contrasting elements: front part-shoulder, lower front part, waistband, sleeve hem
- Reflective elements: reflective stripes in body language look (5 cm wide) running vertically over the shoulder, on the upper and lower arm, around the torso and 2 reflective stripes on each sleeve

KUB\_1779 8420-3497

1 Stk.



## SAFETY 7 High-Vis work jacket PSA 3 - warning orange/anthracite

- Contrasting elements: front part-shoulder, lower front part, waistband, sleeve hem
- Reflective elements: reflective stripes in body language look (5 cm wide) running vertically over the shoulder, on the upper and lower arm, around the torso and 2 reflective stripes on each sleeve

KUB\_1779 8420-3797

1 Stk.



## REFLECTIQ High-Vis weather parka PSA 2 - warning orange

- Reflective elements: reflective look in body language, segmented and continuous reflective tape combined, 2 reflective strips around the torso and sleeves (7 cm wide), additional reflective strips over the shoulders (5 cm wide)

KUB\_1975 5228-37

1 Stk.



## REFLECTIQ High-Vis weather parka PSA 2 - warning yellow

- Reflective elements: reflective look in body language, segmented and continuous reflective tape
- 2 all-round reflective strips on the torso and sleeves (approx. 7 cm wide)
- Additional reflective strips over the shoulders (approx. 5 cm wide)

KUB\_1975 8228-34

1 Stk.



## REFLECTIQ High-Vis weather blouson PSA 2 - warning yellow

- Reflective elements: reflective look in body language, segmented and continuous reflective tape combined, 2 reflective strips around the torso and sleeves (7 cm wide), additional reflective strips over the shoulders (5 cm wide)

KUB\_1977 8228-34

1 Stk.



## REFLECTIQ High-Vis weather blouson PSA 2 - warning orange

- Reflective elements: reflective look in body language, segmented and continuous reflective tape combined, 2 reflective strips around the torso and sleeves (7 cm wide), additional reflective strips over the shoulders (5 cm wide)

KUB\_1977 8228-37

1 Stk.



## REFLECTIQ High-Vis vest PSA 2 - warning yellow/anthracite

- with body-hugging cut
- Reflective elements: reflective look in body language, segmented and sewn reflective tape combined
- 2 reflective strips around the torso, additional reflective strips over the shoulder and on the chest and upper back (5 cm wide)

KUB\_7207 8340-3497

1 Stk.



# jackets



## REFLECTIQ High-Vis vest PSA 2 - warning orange/dark blue

- with body-hugging cut
- Reflective elements: reflective look in body language, segmented and sewn reflective tape combined
- 2 reflective strips around the torso, additional reflective strips over the shoulder and on the chest and upper back (5 cm wide)

KUB\_7207 8340-3748

1 Stk.



## REFLECTIQ High-Vis vest PSA 2 - warning orange/anthracite

- with body-hugging cut
- Reflective elements: reflective look in body language, segmented and sewn reflective tape combined
- 2 reflective strips around the torso, additional reflective strips over the shoulder and on the chest and upper back (5 cm wide)

KUB\_7207 8340-3797

1 Stk.





# Pants



## REFLECTIQ High-Vis trousers PSA 2 - warning yellow/anthracite

- Contrasting elements: hem area, side pockets, pocket flaps, CORDURA® reinforcements
- Stretch: Black color for all color combinations
- Reflective elements: reflective emblem in the knee area, segmented and continuous reflective tape combined

KUB\_2207 8340-3497

1 Stk.



## REFLECTIQ High-Vis trousers PSA 2 - warning orange/dark blue

- Contrasting elements: hem area, side pockets, pocket flaps, CORDURA® reinforcements
- Stretch: Black color for all color combinations
- Reflective elements: reflective emblem in the knee area, segmented and continuous reflective tape combined

KUB\_2207 8340-3748

1 Stk.



## REFLECTIQ High-Vis trousers PSA 2 - warning orange/anthracite

- Contrasting elements: hem area, side pockets, pocket flaps, CORDURA® reinforcements
- Stretch: Black color for all color combinations
- Reflective elements: reflective emblem in the knee area, segmented and continuous reflective tape combined

KUB\_2207 8340-3797

1 Stk.



## REFLECTIQ High-Vis Shorts PSA 2 - warning yellow/anthracite

- Contrasting elements: side pockets, pocket flap, CORDURA® reinforcements
- Reflective elements: segmented and continuous reflective tape combined
- 2 reflective strips around the leg (5 cm wide)

KUB\_2307 8340-3497

1 Stk.



## REFLECTIQ High-Vis Shorts PSA 2 - warning orange/dark blue

- Contrasting elements: side pockets, pocket flap, CORDURA® reinforcements
- Reflective elements: segmented and continuous reflective tape combined
- 2 reflective strips around the leg (5 cm wide)

KUB\_2307 8340-3748

1 Stk.



## REFLECTIQ High-Vis Shorts PSA 2 - warning orange/anthracite

- Contrasting elements: side pockets, pocket flap, CORDURA® reinforcements
- Reflective elements: segmented and continuous reflective tape combined
- 2 reflective strips around the leg (5 cm wide)

KUB\_2307 8340-3797

1 Stk.



## REFLECTIQ High-Vis summer trousers PSA 2 - warning yellow/anthracite

- Contrasting elements: hem area, side pockets, pocket flaps, CORDURA® reinforcements
- Stretch: black for all color combinations
- Ventilation fabric: back of knee, crotch and inner thigh

KUB\_2407 8343-3497

1 Stk.



# Pants



## REFLECTIQ High-Vis summer trousers PSA 2 - warning orange/dark blue

- Contrasting elements: hem area, side pockets, pocket flaps, CORDURA® reinforcements
- Stretch: black for all color combinations
- Ventilation fabric: back of the knee, crotch and inner thigh

KUB\_2407 8343-3748

1 Stk.



## REFLECTIQ High-Vis summer trousers PSA 2 - warning orange/anthracite

- Contrasting elements: hem area, side pockets, pocket flaps, CORDURA® reinforcements
- Stretch: black for all color combinations
- Ventilation fabric: back of the knee, crotch and inner thigh

KUB\_2407 8343-3797

1 Stk.



## REFLECTIQ High-Vis rain trousers PSA 2 - warning yellow

- 2 reflective strips (7 cm wide) on each leg

KUB\_2995 8228-34

1 Stk.



## REFLECTIQ High-Vis rain trousers PSA 2 - warning orange

- 2 reflective strips (7 cm wide) on each leg

KUB\_2995 8228-37

1 Stk.



## REFLECTIQ High-vis weather trousers, bib and brace trousers PSA 2 - warning yellow

- Modern look thanks to ripstop Oxford fabric
- Reflective elements: 2 reflective strips around the leg (7 cm wide)

KUB\_2996 8231-34

1 Stk.



## REFLECTIQ High-vis weather trousers, bib and brace trousers PSA 2 - warning orange

- Modern look thanks to ripstop Oxford fabric
- Reflective elements: 2 reflective strips around the leg (7 cm wide)

KUB\_2996 8231-37

1 Stk.



# T-shirts and sweatshirts



## REFLECTIQ High-Vis polo shirt PSA 2 - warning yellow

- Short sleeve
- with 3-hole button placket
- with segmented reflective stripes in body language for optimum visibility

KUB\_5042 8227-34

1 Stk.



## REFLECTIQ High-Vis polo shirt PSA 2 - warning orange

- Short sleeve
- with 3-hole button placket
- with segmented reflective stripes in body language for optimum visibility

KUB\_5042 8227-37

1 Stk.



## REFLECTIQ High-Vis polo shirt PSA 2 - warning red

- Short sleeve
- with 3-hole button placket
- with segmented reflective stripes in body language for optimum visibility

KUB\_5042 8227-54

1 Stk.



## REFLECTIQ High-Vis T-Shirt PSA 2 - warning yellow

- Short sleeve
- Round neckline
- with segmented reflective stripes in body language for optimum visibility

KUB\_5043 8227-34

1 Stk.



## REFLECTIQ High-Vis T-Shirt PSA 2 - warning orange

- Short sleeve
- Round neckline
- with segmented reflective stripes in body language for optimum visibility

KUB\_5043 8227-37

1 Stk.



## REFLECTIQ High-Vis T-Shirt PSA 2 - warning red

- Short sleeve
- Round neckline
- with segmented reflective stripes in body language for optimum visibility

KUB\_5043 8227-54

1 Stk.



## REFLECTIQ High-Vis Longsleeve PSA 2 - warning yellow

- Long sleeve
- with round neckline
- with segmented reflective stripes in body language and on the sleeves for optimum visibility

KUB\_5045 8227-34

1 Stk.



# T-shirts and sweatshirts



## REFLECTIQ High-Vis Longsleeve PSA 2 - warning orange

- Long sleeve
- with round neckline
- with segmented reflective stripes in body language and on the sleeves for optimum visibility

KUB\_5045 8227-37

1 Stk.



## REFLECTIQ High-Vis Longsleeve PSA 2 - warning red

- Long sleeve
- with round neckline
- with segmented reflective stripes in body language and on the sleeves for optimum visibility

KUB\_5045 8227-54

1 Stk.



## Safety shoes



Shoes

Accessories



# Shoes



## FIJI - Safety low shoes made of WRU water-repellent, scratch-resistant and coated leather

Safety half shoe made of WRU water-repellent, scratch-resistant and coated leather with a thickness of 1.8 - 2.0 mm.  
Lining made of highly breathable and abrasion-resistant textile material.

GIA-3H142EV  
535 g  
1 Stk.



## BALI - High safety shoes made of WRU water-repellent, scratch-resistant and coated leather

High safety shoes, made of WRU water-repellent, scratch-resistant and coated leather with a thickness of 1.8 - 2.0 mm.  
Lining made of highly breathable and abrasion-resistant textile material.  
Reinforced heel STABILITY SUPPORT made of PU (polyurethane).

GIA-3H149EV  
550 g  
1 Stk.



## MARMOLADA - Calf-high safety boots made from WPA water-repellent, scratch-resistant coated leather

Calf-high safety boots, WPA water-repellent scratch-resistant coated leather thickness 1.8 to 2.0 mm.  
Lining and tongue made of felt with antibacterial WinTherm® safety micro-film.

GIA-3RUB179E  
690 g  
1 Stk.



## LOBBIA - Safety shoes made from WPA water-repellent full-grain leather

Safety shoes made of EPA water-repellent full-grain IDROTECH® leather, thickness 1.8 to 2.0 mm.  
PU-coated, high-strength, abrasion-resistant heel.  
CE EN ISO 20345:2022 S7S FO CI HI HRO SC SR

GIA-3RUB451L  
580 g  
1 Stk.



## STELVIO NEW - Safety shoes made from WPA water-repellent full-grain leather

Safety shoes made of EPA water-repellent full-grain IDROTECH® leather, thickness 1.8 to 2.0 mm.  
PU-coated, high-strength, abrasion-resistant heel.  
CE EN ISO 20345:2022 S7S FO CI HI HRO SC SR

GIA-3RUB452L  
580 g  
1 Stk.



## TRIGLAV - Safety shoes made from WPA water-repellent full-grain leather

High safety shoes made of EPA water-repellent full-grain IDROTECH® leather, thickness 1.8 to 2.0 mm.  
PU-coated, high-strength, abrasion-resistant heel.  
CE EN ISO 20345:2022 S7S FO CI HI HRO SC SR

GIA-3RUB458L  
580 g  
1 Stk.



## AROLLA - High safety shoes made of WPA water-repellent full-grain leather

High safety shoes made of EPA water-repellent full-grain IDROTECH® leather, thickness 1.8 to 2.0 mm.  
PU-coated, high-strength, abrasion-resistant heel.  
CE EN ISO 20345:2022 S7S FO CI HI HRO SC SR

GIA-3RUB459L  
640 g  
1 Stk.



# Shoes



## DEFENDER - Safety shoes high, made of WPA water-repellent leather with ankle protection

High safety shoes, made of WPA water-repellent leather, thickness 1.8 - 2.0 mm  
PU-coated, high-strength, abrasion-resistant heel. With ankle protection.  
CE EN ISO 20345:2022 S7S FO CI AN SC SR

GIA-3U159D  
630 g  
1 Stk.



## ZIRCON - Low shoe made from WPA water-repellent leather

Low shoe made from 1.8 - 2.0 mm WPA water-repellent leather.  
Lining made of highly breathable and abrasion-resistant textile material.  
Shoe with reflective insert

GIA-3U481D  
530 g  
1 Stk.



## TOPAZ - Lace-up boots made from WPA water-repellent leather

Lace-up boot made from WPA water-repellent leather with a thickness of 1.8 - 2.0 mm.  
Lining made of highly breathable and abrasion-resistant textile material.  
Shoe with reflective insert

GIA-3U488D  
530 g  
1 Stk.



# Accessories



## 4001 Comfort insole / insole

Comfort insole / insole

GIA-4001

1 Stk.



## 5000 - Insole / insole

Three-material, extra comfortable.

GIA-5000

1 Stk.



## Dielectric - insole / insole

Dielectric insole, two-material extra-comfort insole with activated carbon.

GIA-Dielectric

1 Stk.



## Shoelaces, black, round, 90 cm long

Round, original Giasco shoelaces, black Length 90 cm  
10 pairs per box

GIA-G153-10

1 Stk.

90 cm



## Shoelaces, black, round, 110 cm long

Round, original Giasco shoelaces, black Length 110 cm  
10 pairs per box

GIA-G514-10

1 Stk.

110 cm



## 4001 Comfort insole / insole

Comfort insole / insole

GIA-Memory

1 Stk.



## YEAH insole / insole

An extra comfortable insole made of closed-cell polyurethane with patented DryGo!® compound.

GIA-Yeah

1 Stk.





# Used marking technology

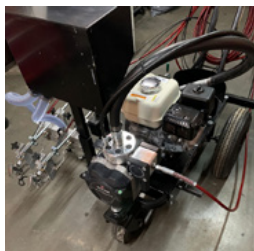


## Hofmann H11

Hofmann H11 for sale.  
The machine is equipped with 2 paint tanks. It can be operated with two different colors or with 1:1 spray plastic.  
The machine is as good as new with approx. 10 operating hours.  
A more powerful drive has also been installed.

used\_014

1 Stk.

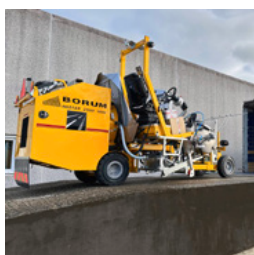


## used PowrLiner 4500

Titan Powrliner 4500 as good as new for sale!

used\_015

1 Stk.

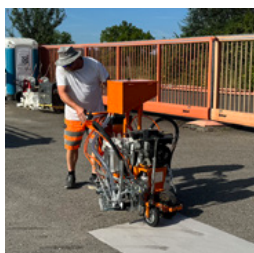


## Borum - BM 2500 CP T D AG

Hofmann H11 for sale.  
The machine is equipped with 2 paint tanks. It can be operated with two different colors or with 1:1 spray plastic.  
The machine is as good as new with approx. 10 operating hours.  
A more powerful drive has also been installed.

used\_016

1 Stk.



## Refurbished 2-color airless machine

Refurbished 2-color marking machine from CMC.

used\_017

1 Stk.



## Additional information



### Additional information

Any prices quoted are valid for 2 months from the date of issue.  
Prices are net prices. Delivery ex works (Incoterm - EXW)  
We assume no liability for the topicality, correctness and completeness of the information.  
Our general terms and conditions apply!  
[https://shop.stramat.com/data/dokumente/AGB\\_de.pdf](https://shop.stramat.com/data/dokumente/AGB_de.pdf)

STR\_zz\_§

