

## CMC AR 30 Pro-P-G H - Inverted airless road marking machine with piston pump 6,17 L/min and Honda



Item number:  
CMC-MTLAR30PROPG-H

Length:  
130 cm

Width:  
65 cm

Height:  
100 cm

Weight:  
110 kg

Created on 17.11.2023



## Description

Especially designed Road marking machine / Linestriper for easy marking of curves. The short wheel-base and special construction with two wheels at the front and a steerable rear wheel make it the ideal machine for marking narrow radii. The AR 30 Pro-G is a simple, easy and uncomplicated road marking machine for small jobs for professionals or in municipal areas! Equipped with a piston-pump.

### Gasoline engine:

- power 6 HP
- self-winding pull start

### Parking brake

on front wheel

### Swivel rear wheel

to stripe very tight curves. It can be locked or unlocked during the work by a lever on handlebars. Steering hardness is adjustable by proper regulator.

# Description

## Telescopic pointer

for easily following pre-marking or precisely matching existing line

## Handlebars

with adjustable height

## Holder for paint bucket

(max diam. 32 cm)

## Airless piston-pump:

- max. working pressure 210 bar
- max. vol.flow 6,14 l/min

## Removable paint gun

can be used as manual gun (for stenciling) or as automatic gun controlled by lever (for line). Standard nozzle for 10-20 cm line. (Line width can be ranged from 5 cm to 30 cm by changing nozzle and adjusting gun height)

## Gun support with wheel

to follow the road 10 m paint hose

## MAX. LINE WIDTH:

- 50 cm (achievable only with proper optional equipment)

## Applications:

- Marking of plastic sport tracks (tartan tracks)
- Roadmarking in inner city / municipal areas
- Marking of symbols or surfaces such as protection routes
- parking marks
- Purchasing markets
- forwarding areas
- storage areas

## Spare parts



### Paint guns Plug-in filter 100 mesh (yellow)

Item number: BER-2004

Paint spray gun plug-in filter 100 mesh (yellow).  
For filtering the marking paint in the paint spray gun.

---



### Suction Filter 28 x 1,5 IG 60 Mesh

Item number: BER-22906

Suction filter 28 x 1.5 IG 60 mesh.  
Suction filter short. Reinforced version.

---



### Paint guns Plug-in filter 50 mesh (white)

Item number: BER-FM2002

Paint spray gun insert filter 50 mesh (white).  
For filtering your marking paint in the paint spray gun.

---



### ball valve 3/8"

Item number: CMC-05177

For switching from the backwash function to the marking function.

---

## Spare parts



### Paint hose 10 meters long

Item number: CMC-10H

---



### Airless Spray Tip for Stenceling 219

Item number: CMC-200-219

---



### Airless Spray Tip for Line Marking 319

Item number: CMC-202-319

---



### Flange

Item number: CMC-AR30PRO-02-006

Flange for fixing the front wheel.  
Suitable for AR 30 Pro models.

---

## Spare parts



### Bottle of 250 ml of lubricating oil

Item number: CMC-BIO46

Fluido Bio 46

Suitable for CMC piston pumps.

The special oil prevents premature wear on the pump.

---



### Piston Filter 50 Mesh C94 white

Item number: CMC-C94-009

---



### Nozzle extension 45 cm

Item number: CMC-C94-017

Nozzle extension 45 cm long for easy application of surfaces or even symbols.

---



### Manual airless gun short - Model C94

Item number: CMC-C94N

Airless gun C94 short.

Connection: 1/4 inch

Without hand guard, Without nozzle holder, Without airless nozzle

---



# Spare parts



## Locking pin for marker

Item number: CMC-CDK90-01-007  
suitable for CMC marking machine

Cotter pin included



## Kit Prime Valve 3/8 inch

Item number: CMC-KIT00018

Conversion kit ball valve to new main valve.

Consisting of:

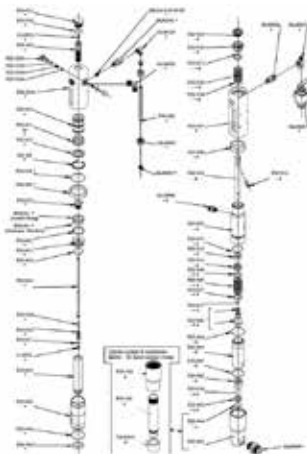
- VS38-000 main valve
- swivel fitting with return hose (with metal end)
- T-fitting for manometer



## CMC P20 Airless Pump

Item number: CMC-P20

Suitable for CMC airless pump P20.

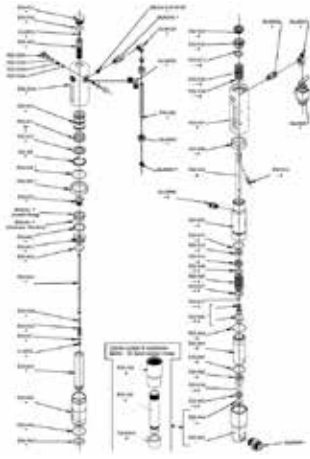


## Ball seat ø 25 for P20

Item number: CMC-P20-002

Suitable for CMC airless pump P20.

# Spare parts

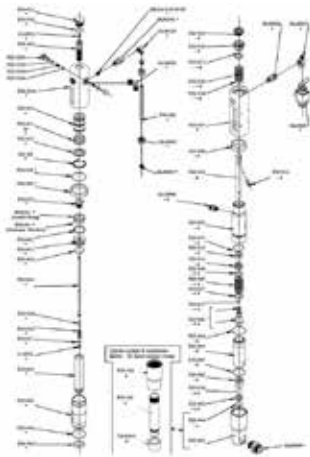


## ø 25 ball cage

Item number: CMC-P20-003

Suitable for CMC airless pump P20.

---

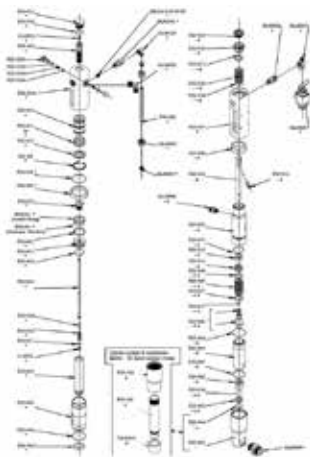


## Spindle bushing

Item number: CMC-P20-019

Suitable for CMC airless pump P20.

---

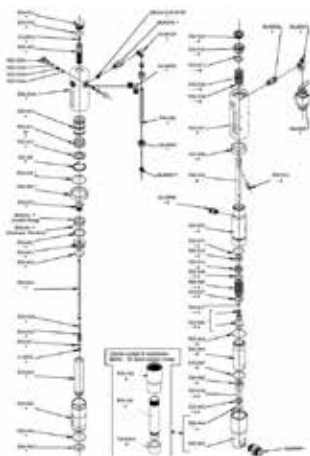


## Spindle bushing

Item number: CMC-P20-033

Suitable for CMC airless pump P20.

---



## Ball

Item number: CMC-P20-034

Suitable for CMC airless pump P20.

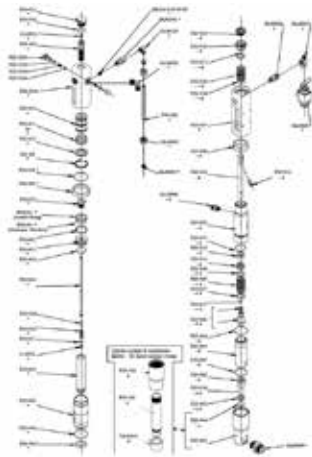
---

# Spare parts



## Packing to CMC Airlesspump P20.

Item number: CMC-P20-039



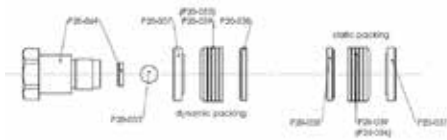
## O-ring 2112 in PTFE

Item number: CMC-P20-044

Suitable for CMC airless pump P20.

## Gasket set color gaskets

Item number: CMC-P20-092



## Hydraulic-Oil-Filter for AR 30 Pro P

Item number: CMC-P21-015

Kein Bild verfügbar!

Bitte beachten Sie die  
Dokumente unter  
Downloads / Pdf Docs

No picture available!

Please have a look for the  
documents you will find under  
Downloads / Pdf Docs



# Spare parts



## Plastic tool box

Item number: CMC-PI00004

Plastic tool box

suitable for CMC marking machines.

---



## Plastic handle

Item number: CMC-PL0007

suitable for CMC marking machine

---



## Manometer / Pressure gauge 400 bar

Item number: CMC-PN00211

Pressure gauge with a maximum pressure indication of 400 bar.

---



## Cable for gun release 2.500 mm

Item number: CMC-SU00021

Length: 2,500 mm

Suitable for AR30E, AR30Pro, AR30 2C

---

# Spare parts



Code/Year	Description	Quantity
10	CON. PRO. MARK. LAMP	MARKER TO MARK & INDICATE THE POSITION OF THE POINT
11	RELEASER OF SPRING BUSH	TO RELEASE THE SPRING
12	SPRING	TO RELEASE THE SPRING
13	FORN. GEAR	FORN. GEAR
14	FORN. GEAR	FORN. GEAR
15	FORN. GEAR	FORN. GEAR
16	FORN. GEAR	FORN. GEAR
17	FORN. GEAR	FORN. GEAR
18	FORN. GEAR	FORN. GEAR
19	FORN. GEAR	FORN. GEAR
20	FORN. GEAR	FORN. GEAR
21	FORN. GEAR	FORN. GEAR
22	FORN. GEAR	FORN. GEAR
23	FORN. GEAR	FORN. GEAR
24	FORN. GEAR	FORN. GEAR

## Marking-unit with wheel

Item number: CMC-SU00030

Marker unit with plastic wheel - to keep the distance between the paint gun and the substrate always at the same level.



## Cable sheath for gun release cable SU00021

Item number: CMC-SU00132

Length: 2,500 mm  
Suitable for AR30E, AR30Pro, AR30 2C

## Lever for triggering the paint pistol or the rotary wheel

Item number: CMC-SU00156  
suitable for AR 30 Pro series



## Suction hose

Item number: CMC-TV1ASPAR30  
Suction hose for AR 30 series with diaphragm pumps.

# Spare parts



## High pressure paint hose 1/4" 10 meter

Item number: CMC-TVAPR1/410MT

High-pressure paint hose

Length: 10 meters

Connection: 1/4 inch

---



## Circulation hose

Item number: CMC-TVAPR1/41100I

High pressure circulation hose suitable for new changeover valve VS38-000

---



## High pressure colour filter 60 mesh

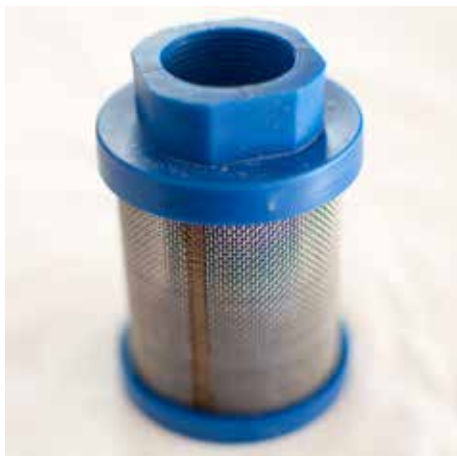
Item number: CMC-VE00062

suitable for CMC marking machine

Length: 145 mm

diameter 25 mm

---



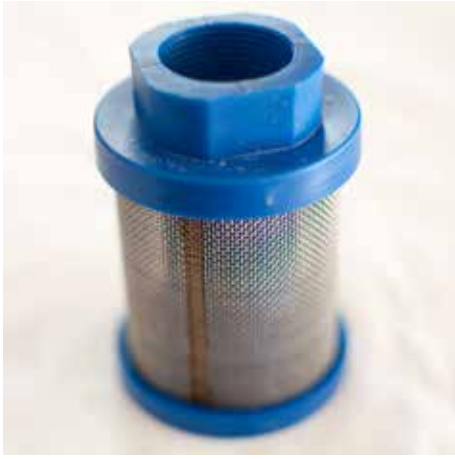
## Suction filter blue

Item number: CMC-VE00064

Suitable for CMC machines.

---

# Spare parts



## Suction filter blue

Item number: CMC-VE00064

Suitable for CMC machines.

---



## Suction Filter short

Item number: CMC-VE00067



## High pressure paint filter 30 mesh

Item number: CMC-VE00110

suitable for CMC marking machine

Length: 145 mm

Diameter: 25 mm

---



## Prime Valve 3/8 inch

Item number: CMC-VS38-000

For switching from backwash to the gun.

Suitable for the CMC AR 30 series.

---



## Accessories/Extensions



### Airless Spray Tip for Stenceling 219

Item number: CMC-200-219

---



### Nozzle holder for airless nozzle

Item number: CMC-200-998

---



### Airless Spray Tip for Line Marking 319

Item number: CMC-202-319

---



### Second manual paint gun

Item number: CMC-2PAR30

Second manual airless gun with suspension, hose and cable release.

---



## Accessories/Extensions



### Bottle of 250 ml of lubricating oil

Item number: CMC-BIO46

Fluido Bio 46

Suitable for CMC piston pumps.

The special oil prevents premature wear on the pump.



### Manual Paint gun C94 including 10 m Hose

Item number: CMC-C94+10H

In order to also be able to carry out area markings over greater distances.



### Nozzle extension 45 cm

Item number: CMC-C94-017

Nozzle extension 45 cm long for easy application of surfaces or even symbols.



### Paint-Bucket with Lid made of Stainless-Steel

Item number: CMC-CONTINOX30C

Stainless steel paint container with lid to match AR 30 series.

Diameter: 33 cm

Height: 40 cm

Capacity: Approx. 30 liters

# Accessories/Extensions

Kein Bild verfügbar!

Bitte beachten Sie die Dokumente unter Downloads / Pdf Docs

No picture available!

Please have a look for the documents you will find under Downloads / Pdf Docs

## Gravity glass bead dispenser 15 cm

**Item number:** CMC-DISPERLAR30-1515

Double gravity glass bead spreader for CMC hand-held marking machines.

Maximum spreading width: 15 cm



## Gravity glass bead dispenser 15 cm

**Item number:** CMC-DISPERLAR30-20

Gravity glass bead spreader for CMC hand-held marking machines.

Maximum spreading width: 15 cm



## Gravity Glass bead dispenser 30 cm

**Item number:** CMC-DISPERLAR30-30

Gravity glass bead spreader for CMC hand-held marking machines.

Maximum spreading width: 30 cm



## Glass beads system with conical glass beads spreader

**Item number:** CMC-DISPERLAR30-CON

Gravity glass bead scattering system with special outlet system.

This prevents the reflex glass beads from blowing away due to the apron and thus reduces the amount of material used.

# Accessories/Extensions



## 50 liters plastic paint tank

Item number: CMC-KITCONT50

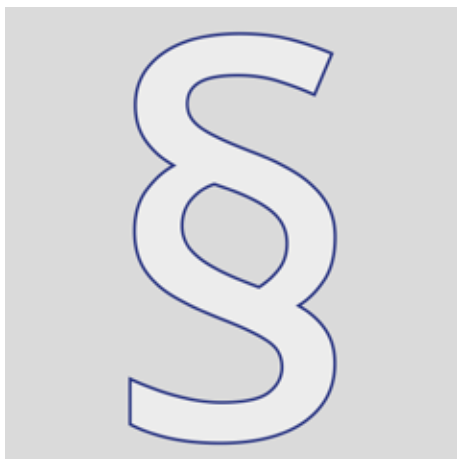


## Marking-unit with wheel

Item number: CMC-SU00030

Marker unit with plastic wheel - to keep the distance between the paint gun and the substrate always at the same level.

Code	Quantity	Description	Remarks
01	1	MARKING UNIT	MARKING UNIT WITH PLASTIC WHEEL
02	1	WHEEL	PLASTIC WHEEL OF THE MARKING UNIT
03	1	WHEEL MOUNTING	WHEEL MOUNTING OF THE MARKING UNIT
04	1	WHEEL MOUNTING	WHEEL MOUNTING OF THE MARKING UNIT
05	1	WHEEL MOUNTING	WHEEL MOUNTING OF THE MARKING UNIT
06	1	WHEEL MOUNTING	WHEEL MOUNTING OF THE MARKING UNIT
07	1	WHEEL MOUNTING	WHEEL MOUNTING OF THE MARKING UNIT
08	1	WHEEL MOUNTING	WHEEL MOUNTING OF THE MARKING UNIT
09	1	WHEEL MOUNTING	WHEEL MOUNTING OF THE MARKING UNIT
10	1	WHEEL MOUNTING	WHEEL MOUNTING OF THE MARKING UNIT
11	1	WHEEL MOUNTING	WHEEL MOUNTING OF THE MARKING UNIT
12	1	WHEEL MOUNTING	WHEEL MOUNTING OF THE MARKING UNIT



## Additional information

Item number: zz\_§

Any prices quoted are valid for 2 months from the date of issue. Prices are net prices. Delivery ex works (Incoterm - EXW) We assume no liability for the topicality, correctness and completeness of the information.

Our general terms and conditions apply!

[https://shop.stramat.com/data/dokumente/AGB\\_de.pdf](https://shop.stramat.com/data/dokumente/AGB_de.pdf)