

CMC AR 30 Pro-H - Airless road marking machine with diaphragm pump 5,9 L/min with Honda engine



Item number:
CMC-MTLAR30PRO-H

Length:
162 cm

Width:
65 cm

Height:
100 cm

Weight:
110 kg

Created on 24.02.2025



Description

Simple, light and uncomplicated hand-guided road marking machine for small markings in the professional or municipal field! Equipped with a diaphragm pump.

Gasoline engine:

- Honda
- Power 6 HP
- Manual starter

In a few minutes you can quickly replace the gasoline engine with the appropriate electric motor. (See the following articles)

Hand-launched machine:

It is also possible to equip the AR 30 Pro with an HMC or HMC-C, the hydraulic drive carriages. (Note the follow up articles)

Parking brake:

on the rear wheel

Adjustable front wheel,

Description

to mark tight radii. It can be locked or unlocked during work by a lever on the handlebar. Steering hardness is adjustable by a dedicated control.

Telescopic visor:

For easy initial marking or precise re-marking of existing lines.

Handlebars:

Is adjustable in height.

Holder for paint bucket:

(diameter max. 32 cm)

Airless diaphragm pump:

- max. operating pressure 210 bar
- max. volume flow 5,9 l / min

Removable paint gun:

This can be used as a manual gun for stencils or surface markings, or by a trigger handle as a gun for lines. Standard nozzle for 10-20 cm line. (Line width can vary from 5 cm to 30 cm by changing the nozzle and/or adjusting the gun height).

Marker with wheel:

To keep the distance between the paint gun and the roadway the same. (Optional)

MAX. LINES WIDTH:

- 50 cm (Only possible with suitable accessories).

Fields of application:

- Ground markings in urban/municipal areas
- Marking of symbols or areas such as safety paths
- parking lot markings
- shopping markets
- forwarding areas
- storage areas
- Marking works without emission by an electric motor (optional)

Spare parts



Paint guns Plug-in filter 100 mesh (yellow)

Item number: BER-2004

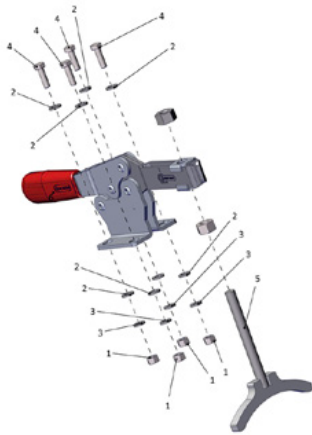
Paint gun plug-in filter 100 mesh (yellow).
For filtering the marking paint in the paint spray gun.
Ideal for polyurethane paints.



Paint guns Plug-in filter 50 mesh (white)

Item number: BER-FM2002

Paint spray gun insert filter 50 mesh (white).
For filtering your marking paint in the paint spray gun.



Parking brake complete

Item number: CMC -KIT00047

For the AR series and the HMC drive trolley.

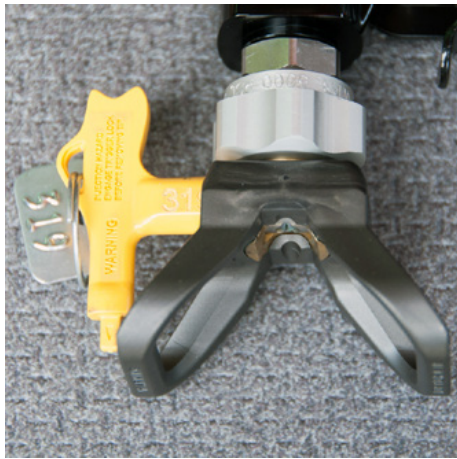


ball valve 3/8"

Item number: CMC-00085

For switching from the backwash function to the marking function.

Spare parts



Nozzle holder for airless nozzle 11/16 " (17.4 mm) for airless nozzles

Item number: CMC-289391

Nozzle holder 11/16 " (17.4 mm) for airless nozzles



Airless nozzle for surface markings 219

Item number: CMC-662-219

TITAN airless nozzle for marking surfaces, symbols, etc.

Spray angle: 20 degrees

Bore: 0.019 inch



Airless nozzle for surface marking 421

Item number: CMC-662-421

TITAN airless nozzle for marking surfaces, symbols, etc.

Spray angle: 40 degrees

Bore: 0.021 inch



Airless nozzle for surface marking 423

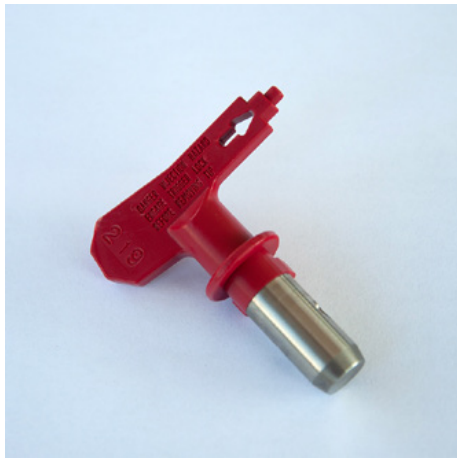
Item number: CMC-662-423

TITAN airless nozzle for marking surfaces, symbols, etc.

Spray angle: 40 degrees

Bore: 0.023 inch

Spare parts



Airless nozzle for surface markings 519

Item number: CMC-662-519

TITAN airless nozzle for marking surfaces, symbols, etc.

Spray angle: 50 degrees

Bore: 0.019 inch



Airless nozzle for surface marking 521

Item number: CMC-662-521

TITAN airless nozzle for marking surfaces, symbols, etc.

Spray angle: 50 degrees

Bore: 0.021 inch



Airless nozzle for line marking 213

Item number: CMC-697-213

TITAN airless nozzle for marking sharp lines.

Spray angle: 20 degrees

Bore: 0.013 inch



Airless nozzle for line markings 215

Item number: CMC-697-215

TITAN airless nozzle for marking sharp lines.

Spray angle: 20 degrees

Bore: 0.015 inch

Spare parts



Airless nozzle for line marking 217

Item number: CMC-697-217

TITAN airless nozzle for marking sharp lines.

Spray angle: 20 degrees

Bore: 0.017 inch



Airless nozzle for line markings 419

Item number: CMC-697-419

TITAN airless nozzle for marking sharp lines.

Spray angle: 40 degrees

Bore: 0.019 inch



Airless nozzle for line markings 421

Item number: CMC-697-421

Titanium airless nozzle for marking sharp lines.

Spray angle: 40 degrees

Bore: 0.021 inch



Airless nozzle for line markings 423

Item number: CMC-697-423

TITAN airless nozzle for marking sharp lines.

Spray angle: 40 degrees

Bore: 0.023 inch

Spare parts



Airless nozzle for line markings 621

Item number: CMC-697-621

TITAN airless nozzle for marking sharp lines.

Spray angle: 60 degrees

Bore: 0.021 inch



Airless nozzle for line markings 627

Item number: CMC-697-627

TITAN airless nozzle for marking sharp lines.

Spray angle: 60 degrees

Bore: 0.027 inch



Airless nozzle for line marking 631

Item number: CMC-697-631

TITAN airless nozzle for marking sharp lines.

Spray angle: 60 degrees

Bore: 0.031 inch



Flange

Item number: CMC-AR30PRO-02-006

Flange for fixing the front wheel.

Suitable for AR 30 Pro models.

Spare parts



Nozzle extension 45 cm

Item number: CMC-C94-017

Nozzle extension 45 cm long for easy application of surfaces or even symbols.



Nozzle extension 60 cm

Item number: CMC-C94-018

Nozzle extension 60 cm long for easy application of surfaces or even symbols.



CMC Model C 94 N - Manual airless gun short

Item number: CMC-C94N

Airless gun C94 short.

Connection: 1/4 inch

Without hand guard, Without nozzle holder, Without airless nozzle



Locking pin for marker

Item number: CMC-CDK90-01-007

suitable for CMC marking machine

Cotter pin included

Spare parts



Anti-pulsation hose

Item number: CMC-EXIT2100

Length = 2,100 mm
F 3/8 - F 3/8
for AR 30 Pro with round chassis



Anti-pulsation hose

Item number: CMC-EXIT2400

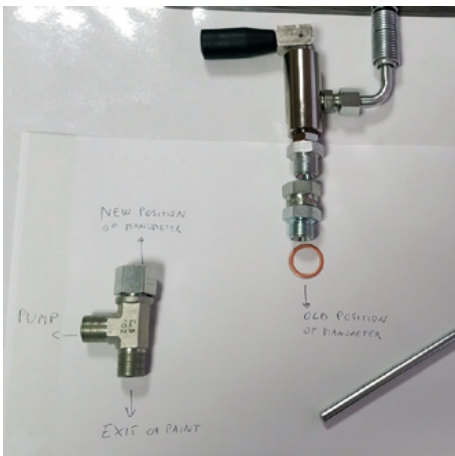
Length = 2,400 mm
F 3/8
F90 3/8
for AR 30 Pro



Anti-pulsation hose

Item number: CMC-EXIT2550

Length = 2,550 mm
F-F
For device that holds the pulsation hose together with black straps.



Kit Prime Valve 3/8 inch

Item number: CMC-KIT00018

Conversion kit ball valve to new main valve.

Consisting of:

- VS38-000 main valve
- swivel fitting with return hose (with metal end)
- T-fitting for manometer

Spare parts



Copper sealing ring 1/2 " 21 x 27 x 1.5)

Item number: CMC-OL00190



Copper Washer 3/8" (17 x 23 x 1,5)

Item number: CMC-OL00191



Connector DIR M 1/4 - F GIR 3/8

Item number: CMC-P00-027



Suction valve complete

Item number: CMC-P01-000

Complete suction valve for AR 30 series with diaphragm pump.

Spare parts



Pressure regulator valve complete

Item number: CMC-P02-000

Pressure control valve for AR 30 diaphragm pump series!



Ball valve complete (return valve)

Item number: CMC-P03-000

Ball valve for AR 30 Pro series with diaphragm pump.



Support for Diaphragm

Item number: CMC-P05-009

Pre-assembled in connection with diaphragm. For CMC diaphragm pumps.



Diaphragm pre-mounted for AR 30

Item number: CMC-P05-016

Pre-assembled diaphragm for the AR 30 pumps.
In addition, the bracket for the diaphragm is also necessary.

Spare parts



Plastic tool box

Item number: CMC-PI00004

Plastic tool box

suitable for CMC marking machines.



Plastic handle

Item number: CMC-PL0007

suitable for CMC marking machine



Manometer / Pressure gauge 400 bar

Item number: CMC-PN00211

Pressure gauge with a maximum pressure indication of 400 bar.



Pneumatic wheel (front wheel) 8/3.00X4

Item number: CMC-RU00058

Front wheel for the AR 30 series with rim.

The rubber wheel ideally compensates for slight irregularities.

Dimension: 8/3.00X4

Spare parts



Cable for gun release 2.200 mm

Item number: CMC-SU00016

Length: 2,200 mm

Suitable for AR30E, AR30Pro, AR30 2C



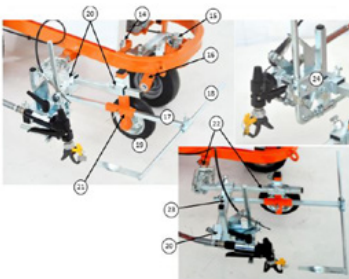
Cable for gun release 2.500 mm

Item number: CMC-SU00021

Length: 2,500 mm

Suitable for AR30E, AR30Pro, AR30 2C

Handle with plastic part



Marking-unit with wheel

Item number: CMC-SU00030

Marker unit with plastic wheel - to keep the distance between the paint gun and the substrate always at the same level.

Code - Code	Description	Description
14	VITE PISANOLO GARNER	SCREW TO BRACK & PROTECTION
15	ELEMENTO DI ASTEIO PISTOLA ATTREZZI	REDUCTION SAUCE OF THE PISTOL WHEEL
16	FORNAREGGIO	FORNAREGGIO
17	BRZIO ARZIO	FRONT BRICE
18	BRZIO ARZIO	FRONT BRICE
19	RUOTA	WHEEL OF THE GUN SUPPORT
20	STR-00-111	CROSS-SUPPORT
21	ARZIO-00-004	SUPPORT OF THE WHEEL AND OF THE PISTOL
22	CS00-00-000	COMPLETE SPECIAL SUPPORT
23	TUBO 2x2x3	SUPPORT OF THE GUN GROUP
24	GRUPPO PISTOLA	GUN GROUP



Cable sheath for gun release cable SU00021

Item number: CMC-SU00132

Length: 2,500 mm

Suitable for AR30E, AR30Pro, AR30 2C

Spare parts



Lever for triggering the paint pistol or the rotary wheel

Item number: CMC-SU00156
suitable for AR 30 Pro series



Intake hose

Item number: CMC-TV1ASPAR30
Intake hose for the AR 30 series with diaphragm pumps.



Suction hose for vertical diaphragm pump

Item number: CMC-TV1ASPAR30-V
Intake hose for the AR 30 series with vertical diaphragm pump.



High pressure paint hose 1/4" 10 meter

Item number: CMC-TVAPR1/410MT
High-pressure paint hose

Length: 10 meters
Connection: 1/4 inch

Spare parts



Circulation hose

Item number: CMC-TVAPR1/41100I

High-pressure circulation hose suitable for new changeover valve VS38-000



High-pressure paint hose 1/4" 15 meters long

Item number: CMC-TVAPR1/415MT

High-pressure paint hose

Length: 15 meters

Connection: 1/4 inch



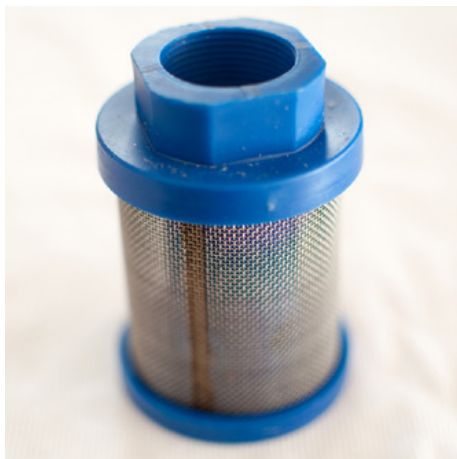
High pressure color filter 60 Mesh

Item number: CMC-VE00062

suitable for CMC marking machine

Length: 145 mm

diameter 25 mm



Suction filter blue

Item number: CMC-VE00064

Suitable for CMC machines.

Spare parts



Set of suction hose and circulation hose

Item number: CMC-VE00081

Fits AR 30 Pro series with diaphragm pumps.



High pressure paint filter 30 mesh

Item number: CMC-VE00110

suitable for CMC marking machine

Length: 145 mm

Diameter: 25 mm



Prime Valve 3/8 inch

Item number: CMC-VS38-000

For switching from backwash to the gun.

Suitable for the CMC AR 30 series.



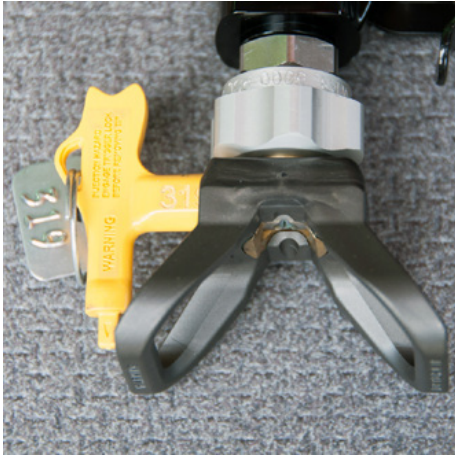
RMCD - Intake filter 28 x 1.5 mm - 60 mesh

Item number: RMCD-22906

Suction filter 28 x 1.5 IG 60 mesh.

Suction filter short. Reinforced version.

Accessories/Extensions



Nozzle holder for airless nozzle 1 1/16 " (17.4 mm) for airless nozzles

Item number: CMC-289391

Nozzle holder 1 1/16 " (17.4 mm) for airless nozzles



Second manual paint gun

Item number: CMC-2PAR30

Second manual airless gun with suspension, hose and cable release.



Airless nozzle for surface markings 219

Item number: CMC-662-219

TITAN airless nozzle for marking surfaces, symbols, etc.

Spray angle: 20 degrees

Bore: 0.019 inch



Airless nozzle for surface marking 421

Item number: CMC-662-421

TITAN airless nozzle for marking surfaces, symbols, etc.

Spray angle: 40 degrees

Bore: 0.021 inch



Airless nozzle for surface marking 423

Item number: CMC-662-423

TITAN airless nozzle for marking surfaces, symbols, etc.

Spray angle: 40 degrees

Bore: 0.023 inch



Airless nozzle for surface markings 519

Item number: CMC-662-519

TITAN airless nozzle for marking surfaces, symbols, etc.

Spray angle: 50 degrees

Bore: 0.019 inch



Airless nozzle for surface marking 521

Item number: CMC-662-521

TITAN airless nozzle for marking surfaces, symbols, etc.

Spray angle: 50 degrees

Bore: 0.021 inch



Airless nozzle for line marking 213

Item number: CMC-697-213

TITAN airless nozzle for marking sharp lines.

Spray angle: 20 degrees

Bore: 0.013 inch

Accessories/Extensions



Airless nozzle for line markings 215

Item number: CMC-697-215

TITAN airless nozzle for marking sharp lines.

Spray angle: 20 degrees

Bore: 0.015 inch



Airless nozzle for line marking 217

Item number: CMC-697-217

TITAN airless nozzle for marking sharp lines.

Spray angle: 20 degrees

Bore: 0.017 inch



Airless nozzle for line markings 419

Item number: CMC-697-419

TITAN airless nozzle for marking sharp lines.

Spray angle: 40 degrees

Bore: 0.019 inch



Airless nozzle for line markings 421

Item number: CMC-697-421

Titanium airless nozzle for marking sharp lines.

Spray angle: 40 degrees

Bore: 0.021 inch



Airless nozzle for line markings 423

Item number: CMC-697-423

TITAN airless nozzle for marking sharp lines.

Spray angle: 40 degrees

Bore: 0.023 inch



Airless nozzle for line markings 621

Item number: CMC-697-621

TITAN airless nozzle for marking sharp lines.

Spray angle: 60 degrees

Bore: 0.021 inch



Airless nozzle for line markings 627

Item number: CMC-697-627

TITAN airless nozzle for marking sharp lines.

Spray angle: 60 degrees

Bore: 0.027 inch



Airless nozzle for line marking 631

Item number: CMC-697-631

TITAN airless nozzle for marking sharp lines.

Spray angle: 60 degrees

Bore: 0.031 inch

Accessories/Extensions



Holder for HMC for AR 30 PRO, AR 30 PRO-2C, L 40 and MAXX

Item number: CMC-AR30PRO-02-035

Bracket for trailer hitch.



CMC C 94 Manual gun with 10 meter hose

Item number: CMC-C94+10H

In order to also be able to carry out area markings over greater distances.



CMC C 94 Manual gun with nozzle extension and 10 meter hose

Item number: CMC-C94+P+10H

In order to also be able to carry out area markings over greater distances.

Including 45 cm nozzle extension



Nozzle extension 45 cm

Item number: CMC-C94-017

Nozzle extension 45 cm long for easy application of surfaces or even symbols.

Accessories/Extensions



Nozzle extension 60 cm

Item number: CMC-C94-018

Nozzle extension 60 cm long for easy application of surfaces or even symbols.



Paint-Bucket with Lid made of Stainless-Steel

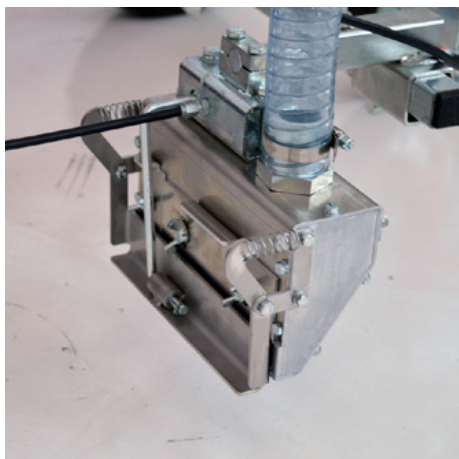
Item number: CMC-CONTINOX30C

Stainless steel paint container with lid to match AR 30 series.

Diameter: 33 cm

Height: 40 cm

Capacity: Approx. 30 liters



Gravity glass bead dispenser 15 cm

Item number: CMC-DISPERLAR30-20

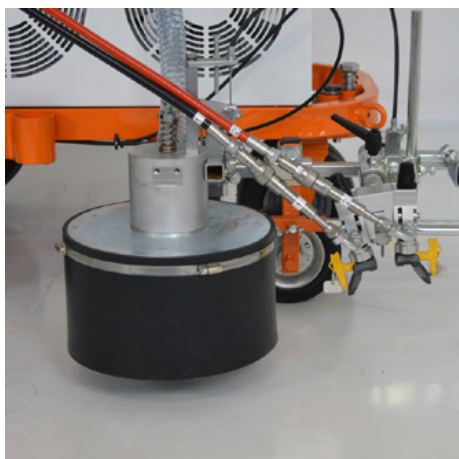
Gravity glass bead spreader for CMC hand-held marking machines. Maximum spreading width: 15 cm



Gravity Glass bead dispenser 30 cm

Item number: CMC-DISPERLAR30-30

Gravity glass bead spreader for CMC hand-held marking machines. Maximum spreading width: 30 cm



Glass beads system with conical glass beads spreader

Item number: CMC-DISPERLAR30-CON

Gravity glass bead scattering system with special outlet system.

This prevents the reflex glass beads from blowing away due to the apron and thus reduces the amount of material used.



CMC - HMC drive carriage with hydraulic drive for road marking machines

Item number: CMC-HMC-B

Expand your productivity with the HMC hydraulically driven drive carriage from CMC. This can be mounted behind your hand-held road marking machine with a hitch. With Briggs and Stratton engine.



Kit 5 liter tank

Item number: CMC-KIT00007

suitable for AR 30 Pro



Electric motor for AR 30 Pro / Electric Floormarkingmachine

Item number: CMC-KITELAR30

For easy and quick conversion from a combustion engine to an electric drive of the airless pump.

Power: 3 hp, single phase

Pump capacity: 5.9 L/min.

Accessories/Extensions



50 liter plastic paint tank

Item number: CMC-PL00199

For the extended performance kit of your marking works. 50 liter paint tank for your CMC marking machine. Made of plastic with lid.



Marking-unit with wheel

Item number: CMC-SU00030

Marker unit with plastic wheel - to keep the distance between the paint gun and the substrate always at the same level.

Code / Code	Description	Description
14	UTILE PISAGGIO CARTER	SCREW TO HELD IN PROTECTION
15	BARILETTA DI RIVESTIMENTO ANTERIORE	PROTECTIVE DEVICE OF THE FRONT BODY
16	FORNELLA D'INFERRE	FRONT POSE
17	SEZZO MESSIO	POINTER PIECE
18	SEZZO MESSIO	POINTER PIECE
19	RUOTA A SUPPORTO VERTICALE	WHEEL OF THE GUN SUPPORT
20	STECCO A CROCE	CROSS SUPPORT
21	SUPPORTO RUOTINO E BASTINO	SUPPORT OF THE WHEEL AND OF THE POINTER
22	SUPPORTO SPECIALE CARNOCIALE COLLETTA	COLLETS SPECIAL SUPPORT
23	SUPPORTO VERTICALE	SUPPORT OF THE GUN GROUP
24	GRUPPO PISTOLA	GUN GROUP



Suspension for paint gun with rotating wheel (Markeur)

Item number: CMC-SU00220

To level out uneven surfaces. Equipped with a rotating air wheel to draw perfect lines even in curves.



Hose reel for airless devices

Item number: CMC-VE00113

Hose reel for airless road marking machines. (without hose)

Holds 10 meters of 1/4 inch hose or 12 meters of 3/8 inch hose.

Accessories/Extensions

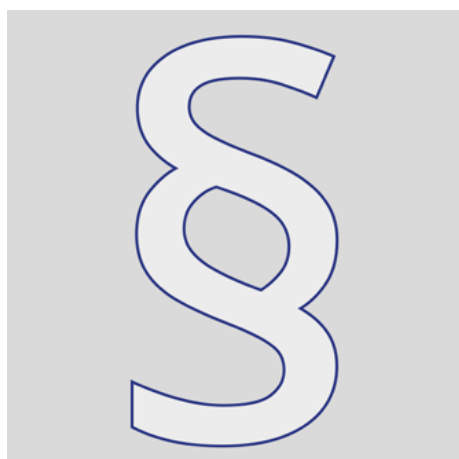


RMCD-LIGHT

Item number: RMCD-Light

RMCD Light for controlling:

- Speed
- color printing
- Recording of marking work with color display



Additional information

Item number: STR_zz_§

Any prices quoted are valid for 2 months from the date of issue.

Prices are net prices. Delivery ex works (Incoterm - EXW)

We assume no liability for the topicality, correctness and completeness of the information.

Our general terms and conditions apply!

https://shop.stramat.com/data/dokumente/AGB_de.pdf