

CMC AR 30 PROP-H - Airless road marking machine with piston pump 6,17 L/min and Honda engine

Item number:
CMC-MTLAR30PROP-H

Length:
155 cm

Width:
75 cm

Height:
101 cm

Weight:
142 kg

Created on 10.09.2024



Description

Simple, light and uncomplicated hand-guided road marking machine for small markings in the professional or municipal area! Equipped with a piston pump.

Petrol engine:

- Honda
- Power 6 HP
- Manual starter

(In a few minutes you can quickly replace the petrol engine with the appropriate electric motor. (See the following articles)

Hand-launched machine:

It is also possible to equip the AR 30 Pro with the HMC or HMC-C, a hydraulic drive carriage. (See the following articles)

Parking brake

on the rear wheel

Adjustable front wheel,

Description

to mark tight radii. It can be locked or unlocked during work by a lever on the handlebar. Steering hardness can be adjusted by a dedicated control.

Telescopic visor

for easy initial marking or precise re-marking of existing lines.

Handlebar

is adjustable in height

Holder for paint bucket

(diameter max. 32 cm)

Airless hydraulic piston pump

- max. operating pressure 210 bar

- max. volume flow 6,17 l / min

Removable paint gun:

This can be used as a manual gun for stencils or surface markings, or by a trigger handle as a gun for lines. Standard nozzle for 10-20 cm line. (Line width can vary from 5 cm to 30 cm by changing the nozzle and/or adjusting the gun height).

Marker with wheel:

To keep the distance between the paint gun and the roadway the same.

MAX. LINE WIDTH:

50 cm (Only possible with suitable accessories).

Spare parts



Paint guns Plug-in filter 100 mesh (yellow)

Item number: BER-2004

Paint gun plug-in filter 100 mesh (yellow).
For filtering the marking paint in the paint spray gun.
Ideal for polyurethane paints.



Suction Filter 28 x 1,5 IG 60 Mesh

Item number: BER-22906

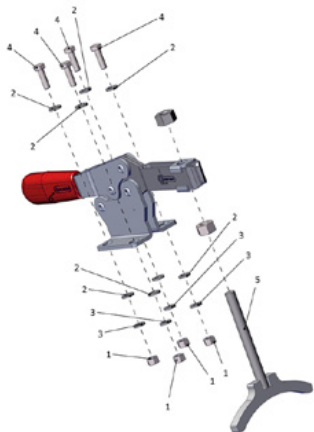
Suction filter 28 x 1.5 IG 60 mesh.
Suction filter short. Reinforced version.



Paint guns Plug-in filter 50 mesh (white)

Item number: BER-FM2002

Paint spray gun insert filter 50 mesh (white).
For filtering your marking paint in the paint spray gun.



Parking brake complete

Item number: CMC -KIT00047

For the AR series and the HMC drive trolley.

Spare parts



ball valve 3/8"

Item number: CMC-05177

For switching from the backwash function to the marking function.



Paint hose 10 meters long

Item number: CMC-10H



Airless Spray Tip for Stenceling 219

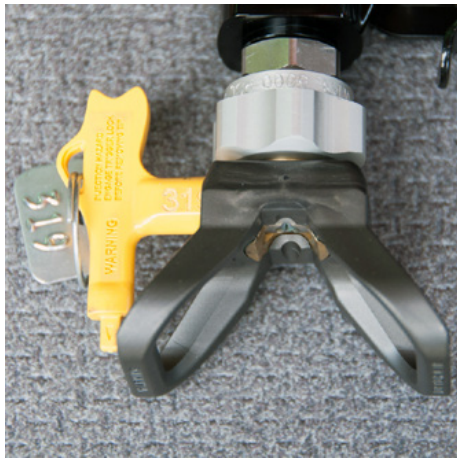
Item number: CMC-200-219



Airless Spray Tip for Line Marking 321

Item number: CMC-202-321

Spare parts



Nozzle holder for airless nozzle 11/16 " (17.4 mm) for airless nozzles

Item number: CMC-289391

Nozzle holder 11/16 " (17.4 mm) for airless nozzles



Airless nozzle for surface markings 219

Item number: CMC-662-219

TITAN airless nozzle for marking surfaces, symbols, etc.

Spray angle: 20 degrees

Bore: 0.019 inch



Airless nozzle for surface marking 421

Item number: CMC-662-421

TITAN airless nozzle for marking surfaces, symbols, etc.

Spray angle: 40 degrees

Bore: 0.021 inch



Airless nozzle for surface marking 423

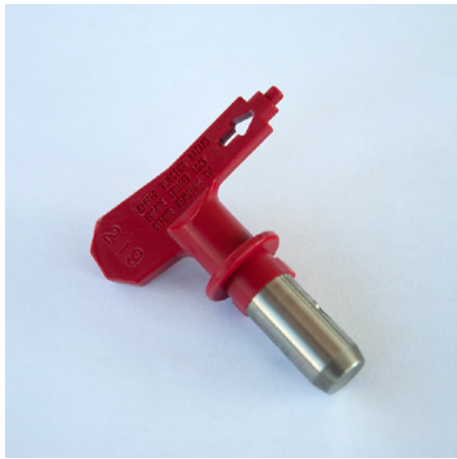
Item number: CMC-662-423

TITAN airless nozzle for marking surfaces, symbols, etc.

Spray angle: 40 degrees

Bore: 0.023 inch

Spare parts



Airless nozzle for surface markings 519

Item number: CMC-662-519

TITAN airless nozzle for marking surfaces, symbols, etc.

Spray angle: 50 degrees

Bore: 0.019 inch



Airless nozzle for surface marking 521

Item number: CMC-662-521

TITAN airless nozzle for marking surfaces, symbols, etc.

Spray angle: 50 degrees

Bore: 0.021 inch



Airless nozzle for line markings 215

Item number: CMC-697-215

TITAN airless nozzle for marking sharp lines.

Spray angle: 20 degrees

Bore: 0.015 inch



Airless nozzle for line marking 217

Item number: CMC-697-217

TITAN airless nozzle for marking sharp lines.

Spray angle: 20 degrees

Bore: 0.017 inch

Spare parts



Airless nozzle for line markings 419

Item number: CMC-697-419

TITAN airless nozzle for marking sharp lines.

Spray angle: 40 degrees

Bore: 0.019 inch



Airless nozzle for line markings 421

Item number: CMC-697-421

Titanium airless nozzle for marking sharp lines.

Spray angle: 40 degrees

Bore: 0.021 inch



Airless nozzle for line markings 423

Item number: CMC-697-423

TITAN airless nozzle for marking sharp lines.

Spray angle: 40 degrees

Bore: 0.023 inch



Airless nozzle for line markings 621

Item number: CMC-697-621

TITAN airless nozzle for marking sharp lines.

Spray angle: 60 degrees

Bore: 0.021 inch

Spare parts



Airless nozzle for line markings 627

Item number: CMC-697-627

TITAN airless nozzle for marking sharp lines.

Spray angle: 60 degrees

Bore: 0.027 inch



Airless nozzle for line marking 631

Item number: CMC-697-631

TITAN airless nozzle for marking sharp lines.

Spray angle: 60 degrees

Bore: 0.031 inch



Flange

Item number: CMC-AR30PRO-02-006

Flange for fixing the front wheel.

Suitable for AR 30 Pro models.



Bottle of 250 ml of lubricating oil

Item number: CMC-BIO46

Fluido Bio 46

Suitable for CMC piston pumps.

The special oil prevents premature wear on the pump.

Spare parts



Nozzle extension 45 cm

Item number: CMC-C94-017

Nozzle extension 45 cm long for easy application of surfaces or even symbols.



Manual airless gun short - Model C94

Item number: CMC-C94N

Airless gun C94 short.

Connection: 1/4 inch

Without hand guard, Without nozzle holder, Without airless nozzle



Locking pin for marker

Item number: CMC-CDK90-01-007

suitable for CMC marking machine

Cotter pin included



Anti-pulsation hose

Item number: CMC-EXIT2100

Length = 2,100 mm

F 3/8 - F 3/8

for AR 30 Pro with round chassis

Spare parts



Anti-pulsation hose

Item number: CMC-EXIT2400

Length = 2,400 mm

F 3/8

F90 3/8

for AR 30 Pro



Anti-pulsation hose

Item number: CMC-EXIT2550

Length = 2,550 mm

F-F

For device that holds the pulsation hose together with black straps.



Hydraulic oil filter for AR 30 Pro P

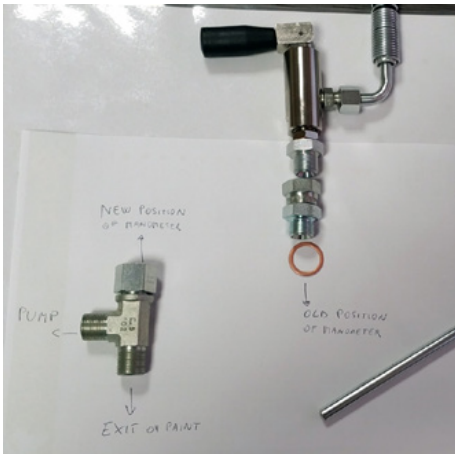
Item number: CMC-FO-0379V

suitable for CMC marking machine

- AR 30 ITPP

- AR 30 Pro P MAXX

- AR 180



Kit Prime Valve 3/8 inch

Item number: CMC-KIT00018

Conversion kit ball valve to new main valve.

Consisting of:

- VS38-000 main valve

- swivel fitting with return hose (with metal end)

- T-fitting for manometer

Spare parts



Copper sealing ring 1/2 " 21 x 27 x 1.5)

Item number: CMC-OL00190



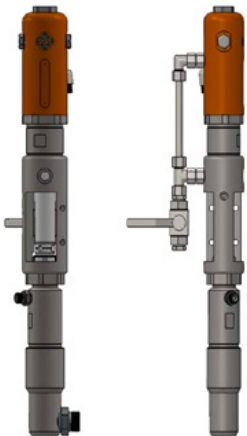
Copper Washer 3/8" (17 x 23 x 1,5)

Item number: CMC-OL00191



Connector DIR M 1/4 - F GIR 3/8

Item number: CMC-P00-027

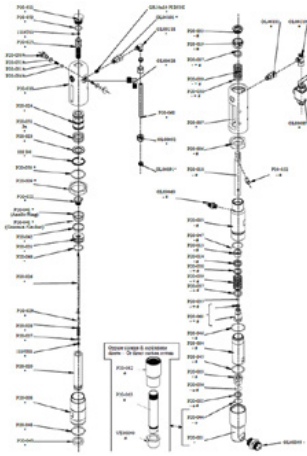


CMC P20 Airless Pump

Item number: CMC-P20

Suitable for CMC airless pump P20.

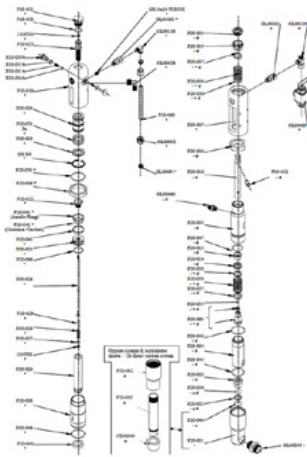
Spare parts



Ball seat \varnothing 25 for P20

Item number: CMC-P20-002

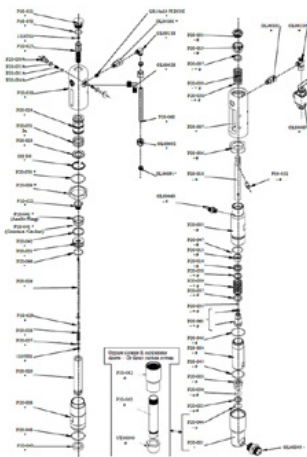
Suitable for CMC airless pump P20.



\varnothing 25 ball cage

Item number: CMC-P20-003

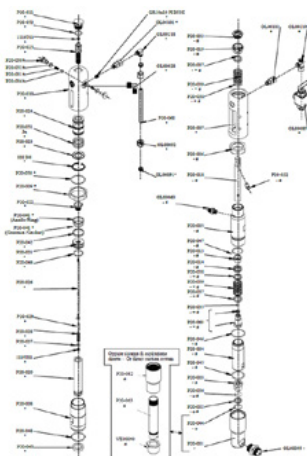
Suitable for CMC airless pump P20.



Spindle bushing

Item number: CMC-P20-019

Suitable for CMC airless pump P20.

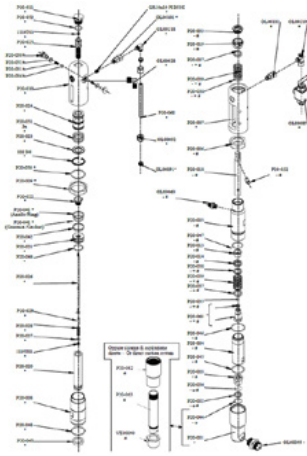


Spindle bushing

Item number: CMC-P20-033

Suitable for CMC airless pump P20.

Spare parts



Ball

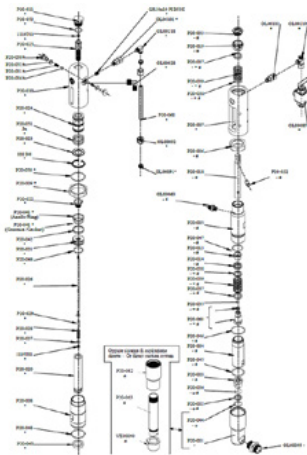
Item number: CMC-P20-034

Suitable for CMC airless pump P20.



Packing to CMC Airlesspump P20.

Item number: CMC-P20-039



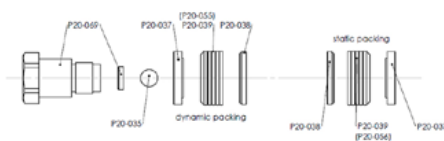
O-ring 2112 in PTFE

Item number: CMC-P20-044

Suitable for CMC airless pump P20.

Gasket set color gaskets

Item number: CMC-P20-092



Spare parts

Kein Bild verfügbar!

Bitte beachten Sie die
Dokumente unter
Downloads / Pdf Docs

No picture available!

Please have a look for the
documents you will find under
Downloads / Pdf Docs

Hydraulic-Oil-Filter for AR 30 Pro P

Item number: CMC-P21-015



Plastic tool box

Item number: CMC-PI00004

Plastic tool box

suitable for CMC marking machines.



Plastic handle

Item number: CMC-PL0007

suitable for CMC marking machine



Manometer / Pressure gauge 400 bar

Item number: CMC-PN00211

Pressure gauge with a maximum pressure indication of 400 bar.

Spare parts

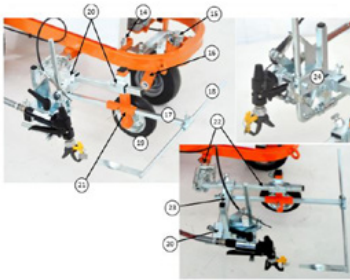


Pneumatic wheel (front wheel) 8/3.00X4

Item number: CMC-RU00058

Front wheel for the AR 30 series with rim.
The rubber wheel ideally compensates for slight irregularities.

Dimension: 8/3.00X4



Marking-unit with wheel

Item number: CMC-SU00030

Marker unit with plastic wheel - to keep the distance between the paint gun and the substrate always at the same level.

Code / Code	Description	Description
14	UTILE PISAGGIO CARTER	SCREW TO KEELON PROTECTION
15	BARNOCCIOLE AVVIO/ARRESTO ANTIPOLVERE	REVERSE ENDS OF THE FRONT SPRING
16	FORCELLA AVVERSO	FRONT FORK
17	ALZACCI	ROOSTER PIECE
18	ALZACCI	ROOSTER PIECE
19	BRUCIATI	WHEEL OF THE GUN SUPPORT
20	STECCO LIA	CROSS-SUPPORT
21	ALZACCI-04	SUPPORT OF THE WHEEL AND OF THE POINTER
22	CONSOLE-080	COMPLETE SPECIAL SUPPORT
23	TRUSSO ZINCATO	SUPPORT OF THE GUN GROUP
24	GRUPPI	GUN GROUP

Lever for triggering the paint pistol or the rotary wheel



Item number: CMC-SU00156

suitable for AR 30 Pro series



Intake hose

Item number: CMC-TV1ASPAR30

Intake hose for the AR 30 series with diaphragm pumps.

Spare parts



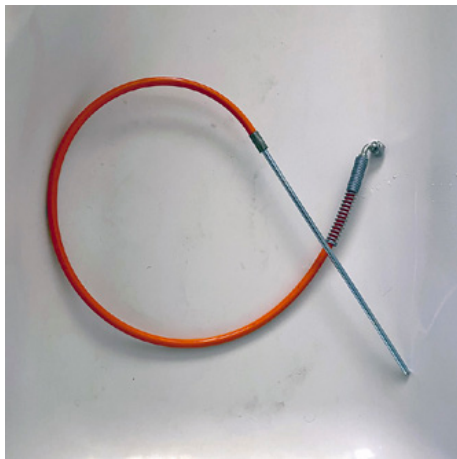
High pressure paint hose 1/4" 10 meter

Item number: CMC-TVAPR1/410MT

High-pressure paint hose

Length: 10 meters

Connection: 1/4 inch



Circulation hose

Item number: CMC-TVAPR1/41100I

High-pressure circulation hose suitable for new changeover valve VS38-000



High-pressure paint hose 1/4" 15 meters long

Item number: CMC-TVAPR1/415MT

High-pressure paint hose

Length: 15 meters

Connection: 1/4 inch



High pressure color filter 60 Mesh

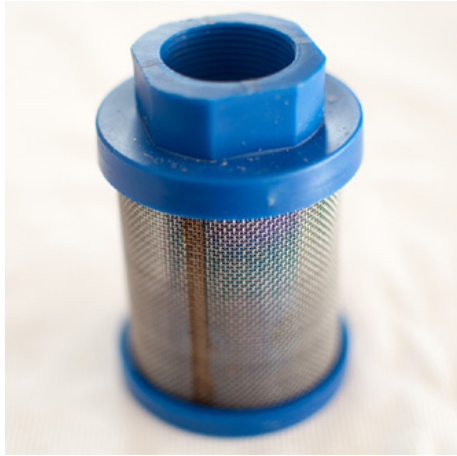
Item number: CMC-VE00062

suitable for CMC marking machine

Length: 145 mm

diameter 25 mm

Spare parts



Suction filter blue

Item number: CMC-VE00064

Suitable for CMC machines.



High pressure paint filter 30 mesh

Item number: CMC-VE00110

suitable for CMC marking machine

Length: 145 mm

Diameter: 25 mm



Prime Valve 3/8 inch

Item number: CMC-VS38-000

For switching from backwash to the gun.

Suitable for the CMC AR 30 series.

Accessories/Extensions



Airless Spray Tip for Stenceling 219

Item number: CMC-200-219



Airless Spray Tip for Line Marking 321

Item number: CMC-202-321



Nozzle holder for airless nozzle 11/16 " (17.4 mm) for airless nozzles

Item number: CMC-289391

Nozzle holder 11/16 " (17.4 mm) for airless nozzles



Second manual paint gun

Item number: CMC-2PAR30

Second manual airless gun with suspension, hose and cable release.



Airless nozzle for surface markings 219

Item number: CMC-662-219

TITAN airless nozzle for marking surfaces, symbols, etc.

Spray angle: 20 degrees

Bore: 0.019 inch



Airless nozzle for surface marking 421

Item number: CMC-662-421

TITAN airless nozzle for marking surfaces, symbols, etc.

Spray angle: 40 degrees

Bore: 0.021 inch



Airless nozzle for surface marking 423

Item number: CMC-662-423

TITAN airless nozzle for marking surfaces, symbols, etc.

Spray angle: 40 degrees

Bore: 0.023 inch



Airless nozzle for surface markings 519

Item number: CMC-662-519

TITAN airless nozzle for marking surfaces, symbols, etc.

Spray angle: 50 degrees

Bore: 0.019 inch



Airless nozzle for surface marking 521

Item number: CMC-662-521

TITAN airless nozzle for marking surfaces, symbols, etc.

Spray angle: 50 degrees

Bore: 0.021 inch



Airless nozzle for line markings 215

Item number: CMC-697-215

TITAN airless nozzle for marking sharp lines.

Spray angle: 20 degrees

Bore: 0.015 inch



Airless nozzle for line marking 217

Item number: CMC-697-217

TITAN airless nozzle for marking sharp lines.

Spray angle: 20 degrees

Bore: 0.017 inch



Airless nozzle for line markings 419

Item number: CMC-697-419

TITAN airless nozzle for marking sharp lines.

Spray angle: 40 degrees

Bore: 0.019 inch

Accessories/Extensions



Airless nozzle for line markings 421

Item number: CMC-697-421

Titanium airless nozzle for marking sharp lines.

Spray angle: 40 degrees

Bore: 0.021 inch



Airless nozzle for line markings 423

Item number: CMC-697-423

TITAN airless nozzle for marking sharp lines.

Spray angle: 40 degrees

Bore: 0.023 inch



Airless nozzle for line markings 621

Item number: CMC-697-621

TITAN airless nozzle for marking sharp lines.

Spray angle: 60 degrees

Bore: 0.021 inch



Airless nozzle for line markings 627

Item number: CMC-697-627

TITAN airless nozzle for marking sharp lines.

Spray angle: 60 degrees

Bore: 0.027 inch

Accessories/Extensions



Airless nozzle for line marking 631

Item number: CMC-697-631

TITAN airless nozzle for marking sharp lines.

Spray angle: 60 degrees

Bore: 0.031 inch



Holder HMC for AR 30 Pro-P, AR 30 Pro P-25

Item number: CMC-AR30P-03-015

Suitable for the following CMC road marking machines:

AR 30 Pro P

AR 30 Pro P-25



Bottle of 250 ml of lubricating oil

Item number: CMC-BIO46

Fluido Bio 46

Suitable for CMC piston pumps.

The special oil prevents premature wear on the pump.



Nozzle extension 45 cm

Item number: CMC-C94-017

Nozzle extension 45 cm long for easy application of surfaces or even symbols.

Accessories/Extensions



Paint-Bucket with Lid made of Stainless-Steel

Item number: CMC-CONTINOX30C

Stainless steel paint container with lid to match AR 30 series.

Diameter: 33 cm

Height: 40 cm

Capacity: Approx. 30 liters

Kein Bild verfügbar!

Bitte beachten Sie die Dokumente unter Downloads / Pdf Docs

No picture available!

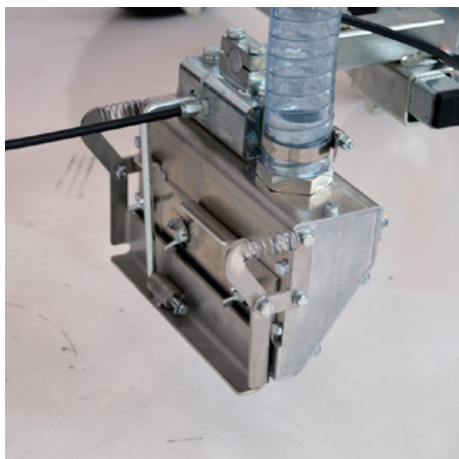
Please have a look for the documents you will find under Downloads / Pdf Docs

Gravity glass bead dispenser 15 cm

Item number: CMC-DISPERLAR30-1515

Double gravity glass bead spreader for CMC hand-held marking machines.

Maximum spreading width: 15 cm



Gravity glass bead dispenser 15 cm

Item number: CMC-DISPERLAR30-20

Gravity glass bead spreader for CMC hand-held marking machines.

Maximum spreading width: 15 cm



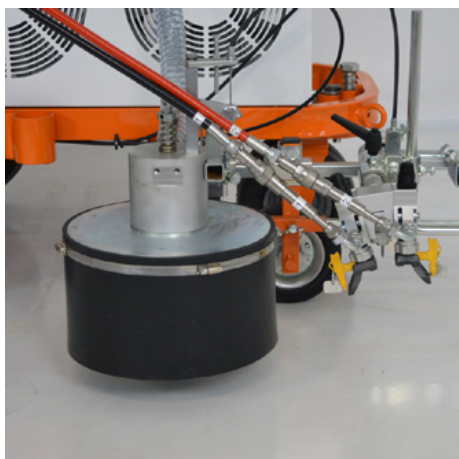
Gravity Glass bead dispenser 30 cm

Item number: CMC-DISPERLAR30-30

Gravity glass bead spreader for CMC hand-held marking machines.

Maximum spreading width: 30 cm

Accessories/Extensions



Glass beads system with conical glass beads spreader

Item number: CMC-DISPERLAR30-CON

Gravity glass bead scattering system with special outlet system.

This prevents the reflex glass beads from blowing away due to the apron and thus reduces the amount of material used.



CMC - HMC drive carriage with hydraulic drive for road marking machines

Item number: CMC-HMC-B

Expand your productivity with the HMC hydraulically driven drive carriage from CMC. This can be mounted behind your hand-held road marking machine with a hitch. With Briggs and Stratton engine.



50 liters plastic paint tank

Item number: CMC-KITCONT50



Electric motor for AR 30 Pro / Electric Floormarkingmachine

Item number: CMC-KITELAR30

For easy and quick conversion from a combustion engine to an electric drive of the airless pump.

Power: 3 hp, single phase

Pump capacity: 5.9 L/min.

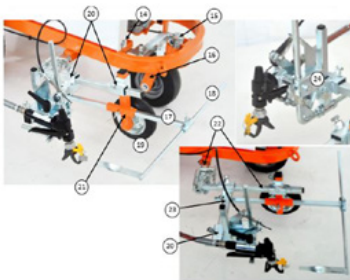
Accessories/Extensions



50 liter plastic paint tank

Item number: CMC-PL00199

For the extended performance kit of your marking works.
50 liter paint tank for your CMC marking machine.
Made of plastic with lid.



Marking-unit with wheel

Item number: CMC-SU00030

Marker unit with plastic wheel - to keep the distance between the paint gun and the substrate always at the same level.

Code / Code	Description	Description
14	UTILE PISAGGIO CARTER	SCREW TO HELD IN PROTECTION
15	BARROTORRE BYRINOPISTOLA	REVISION DEVICE OF THE RIGHT SIDE
16	FORNELLA AEROSOL	RIGHT POSE
17	SEZZO MERENO	POINTER PIECE
18	SEZZO MERENO	POINTER PIECE
19	SEZZO MERENO	WHEEL OF THE GUN SUPPORT
20	STUPO A CROCE	CROSS SUPPORT
21	APPUNTO DI CROCE E MERENO	SUPPORT OF THE WHEEL AND OF THE POINTER
22	APPUNTO SPECIALE CARNOCCIALE COLLETO	COLLETS SPECIAL SUPPORT
23	STUPO 2INCHI	SUPPORT OF THE GUN GROUP
24	GRUPPO PISTOLA	GUN GROUP



Suspension for paint gun with rotating wheel (Markeur)

Item number: CMC-SU00220

To level out uneven surfaces. Equipped with a rotating air wheel to draw perfect lines even in curves.



Hose reel for airless devices

Item number: CMC-VE00113

Hose reel for airless road marking machines.
(without hose)
Holds 10 meters of 1/4 inch hose or 12 meters of 3/8 inch hose.



Additional information

Item number: STR_zz_§

Any prices quoted are valid for 2 months from the date of issue.

Prices are net prices. Delivery ex works (Incoterm - EXW)

We assume no liability for the topicality, correctness and completeness of the information.

Our general terms and conditions apply!

https://shop.stramat.com/data/dokumente/AGB_de.pdf
