

CMC AR30ITPP - Airless road marking machine with hydraulic drive and piston pump

RMCD

Item number:
CMC-MTLAR30ITPP

Length:
165 cm

Width:
60 cm

Height:
105 cm

Weight:
265 kg

Created on 01.01.2025



Description

Self-propelled airless road marking machine with hydraulic drive. Ideal for marking municipalities and towns or even larger parking lots. The machine can also be equipped with spray plastic systems.

Petrol engine:

- Power 7 HP
- Manual starter
- Centrifugal disk

Hydraulic drive with:

- 2 motors directly on rear wheels
- Handle control: steers forwards, backwards and neutral
- VARIABLE-FLOW PUMP: guarantees more safety for the driver and better performance. Enables marking even on steep roads

Parking

- Brake on the rear wheel

C 8000

Description

Automatic line / gap marker or

RMCD - Road Marking Control Device

Probably the easiest to operate system for road marking!
With high-resolution color display and the unique RMCD-Drive!

See our YouTube videos and the link to the RMCD website.

Front wheel with stabilizer springs - for marking very tight radii. It can be locked or unlocked during work by a pneumatic control on the dashboard. It is also possible to remove the springs completely and adjust the steering hardness using the correct controller

Telescopic visor

for easy initial marking or precise re-marking of existing lines.

Engine cut-off device

when the driver lets go of the handlebars.

Plastic container for paint

Capacity 30 l. Container is interchangeable with paint bucket (maximum diameter 32 cm)

Airless piston pump:

- max. vol. flow rate 6.17 l / min

Single-stage single-cylinder compressor:

- Flow rate 215 l / min

- with pressure relief valve

Automatic gun

Standard nozzle for 10 - 20 cm line. (Line width can be adjusted from 5 cm to 30 cm by changing the nozzle and/or adjusting the gun height)

Gun support with the marker:

Manual marker can be replaced by pneumatic marker (see accessories).

High pressure color filter

MAX. LINE WIDTH: 50 cm

(Only possible with matching accessories)

Spare parts



Paint guns Plug-in filter 100 mesh (yellow)

Item number: BER-2004

Paint gun plug-in filter 100 mesh (yellow).
For filtering the marking paint in the paint spray gun.
Ideal for polyurethane paints.



Suction Filter 28 x 1,5 IG 60 Mesh

Item number: BER-22906

Suction filter 28 x 1.5 IG 60 mesh.
Suction filter short. Reinforced version.



Paint guns Plug-in filter 50 mesh (white)

Item number: BER-FM2002

Paint spray gun insert filter 50 mesh (white).
For filtering your marking paint in the paint spray gun.



Airless nozzle for surface markings 219

Item number: CMC-662-219

TITAN airless nozzle for marking surfaces, symbols, etc.
Spray angle: 20 degrees
Bore: 0.019 inch



Airless nozzle for surface marking 421

Item number: CMC-662-421

TITAN airless nozzle for marking surfaces, symbols, etc.

Spray angle: 40 degrees

Bore: 0.021 inch



Airless nozzle for surface marking 423

Item number: CMC-662-423

TITAN airless nozzle for marking surfaces, symbols, etc.

Spray angle: 40 degrees

Bore: 0.023 inch



Airless nozzle for surface markings 519

Item number: CMC-662-519

TITAN airless nozzle for marking surfaces, symbols, etc.

Spray angle: 50 degrees

Bore: 0.019 inch



Airless nozzle for surface marking 521

Item number: CMC-662-521

TITAN airless nozzle for marking surfaces, symbols, etc.

Spray angle: 50 degrees

Bore: 0.021 inch

Spare parts



Airless nozzle for line markings 215

Item number: CMC-697-215

TITAN airless nozzle for marking sharp lines.

Spray angle: 20 degrees

Bore: 0.015 inch



Airless nozzle for line marking 217

Item number: CMC-697-217

TITAN airless nozzle for marking sharp lines.

Spray angle: 20 degrees

Bore: 0.017 inch



Airless nozzle for line markings 419

Item number: CMC-697-419

TITAN airless nozzle for marking sharp lines.

Spray angle: 40 degrees

Bore: 0.019 inch



Airless nozzle for line markings 421

Item number: CMC-697-421

Titanium airless nozzle for marking sharp lines.

Spray angle: 40 degrees

Bore: 0.021 inch

Spare parts



Airless nozzle for line markings 423

Item number: CMC-697-423

TITAN airless nozzle for marking sharp lines.

Spray angle: 40 degrees

Bore: 0.023 inch



Airless nozzle for line markings 621

Item number: CMC-697-621

TITAN airless nozzle for marking sharp lines.

Spray angle: 60 degrees

Bore: 0.021 inch



Airless nozzle for line markings 627

Item number: CMC-697-627

TITAN airless nozzle for marking sharp lines.

Spray angle: 60 degrees

Bore: 0.027 inch



Airless nozzle for line marking 631

Item number: CMC-697-631

TITAN airless nozzle for marking sharp lines.

Spray angle: 60 degrees

Bore: 0.031 inch

Spare parts



Bottle of 250 ml of lubricating oil

Item number: CMC-BIO46

Fluido Bio 46

Suitable for CMC piston pumps.

The special oil prevents premature wear on the pump.



Nozzle extension 45 cm

Item number: CMC-C94-017

Nozzle extension 45 cm long for easy application of surfaces or even symbols.



Yellow rotating beacon

Item number: CMC-FRRTG

Yellow rotating light / warning light for your marking machine.

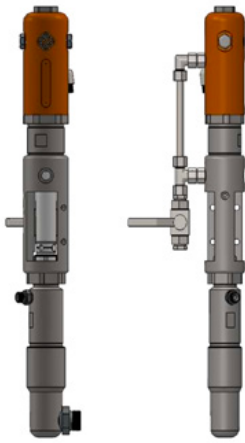


Pneumatic cylinder for marking unit

Item number: CMC-GD05

suitable for CMC marking machine

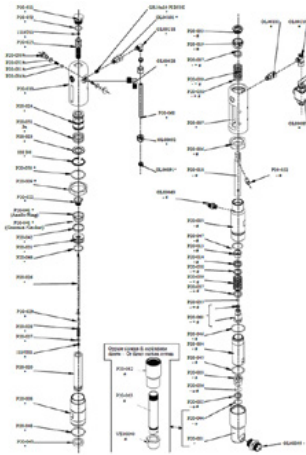
Spare parts



CMC P20 Airless Pump

Item number: CMC-P20

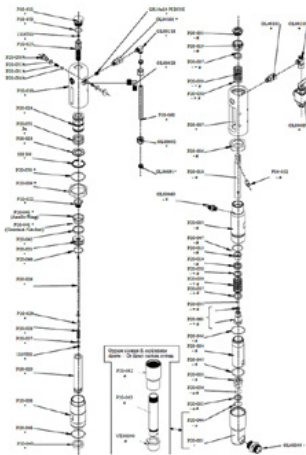
Suitable for CMC airless pump P20.



Ball seat \varnothing 25 for P20

Item number: CMC-P20-002

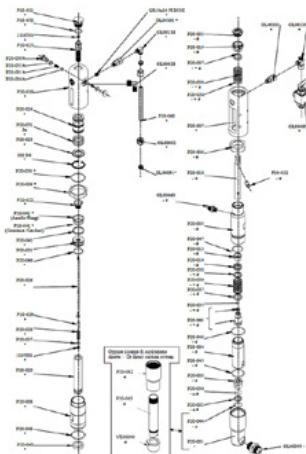
Suitable for CMC airless pump P20.



\varnothing 25 ball cage

Item number: CMC-P20-003

Suitable for CMC airless pump P20.

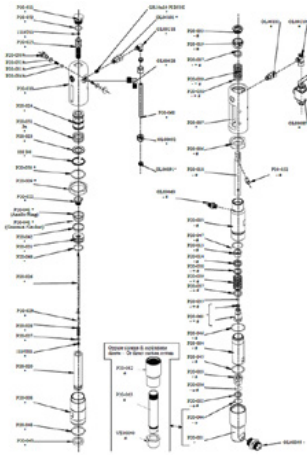


Spindle bushing

Item number: CMC-P20-033

Suitable for CMC airless pump P20.

Spare parts



Ball

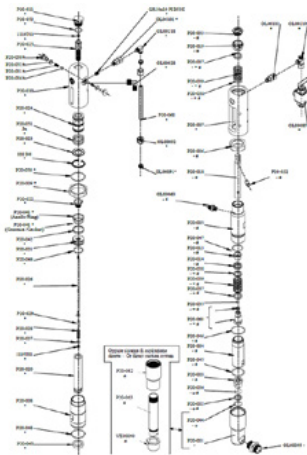
Item number: CMC-P20-034

Suitable for CMC airless pump P20.



Packing to CMC Airlesspump P20.

Item number: CMC-P20-039



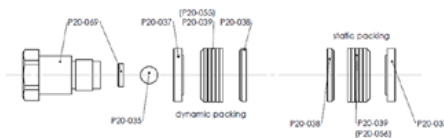
O-ring 2112 in PTFE

Item number: CMC-P20-044

Suitable for CMC airless pump P20.

Gasket set color gaskets

Item number: CMC-P20-092



Spare parts



Water separator

Item number: CMC-PN00008



Pneumatic switch for front wheel

Item number: CMC-PN00039

suitable for CMC marking machine



Pressure regulator 1/4 inch for color or pressure system

Item number: CMC-PN00064

For switching from the backwash function to the marking function.



Pickup wheel for encoder

Item number: CMC-SU00031

For switching from the backwash function to the marking function.

Spare parts



High pressure paint hose 1/4" 10 meter

Item number: CMC-TVAPR1/410MT

High-pressure paint hose

Length: 10 meters

Connection: 1/4 inch



High-pressure paint hose 1/4" 15 meters long

Item number: CMC-TVAPR1/415MT

High-pressure paint hose

Length: 15 meters

Connection: 1/4 inch



High pressure color filter 60 Mesh

Item number: CMC-VE00062

suitable for CMC marking machine

Length: 145 mm

diameter 25 mm



High pressure paint filter 30 mesh

Item number: CMC-VE00110

suitable for CMC marking machine

Length: 145 mm

Diameter: 25 mm



Nozzle holder for airless nozzle

Item number: CMC-200-998

Nozzle holder for airless nozzles for road marking.
Suitable for GRACO, Trittech, TITAN nozzles

Kein Bild verfügbar!

Bitte beachten Sie die
Dokumente unter
Downloads / Pdf Docs

No picture available!

Please have a look for the
documents you will find under
Downloads / Pdf Docs

Second automatic glass bead gun with independent delay regulator

Item number: CMC-2PP



Airless nozzle for surface markings 219

Item number: CMC-662-219

TITAN airless nozzle for marking surfaces, symbols, etc.

Spray angle: 20 degrees

Bore: 0.019 inch



Airless nozzle for surface marking 421

Item number: CMC-662-421

TITAN airless nozzle for marking surfaces, symbols, etc.

Spray angle: 40 degrees

Bore: 0.021 inch



Airless nozzle for surface marking 423

Item number: CMC-662-423

TITAN airless nozzle for marking surfaces, symbols, etc.

Spray angle: 40 degrees

Bore: 0.023 inch



Airless nozzle for surface markings 519

Item number: CMC-662-519

TITAN airless nozzle for marking surfaces, symbols, etc.

Spray angle: 50 degrees

Bore: 0.019 inch



Airless nozzle for surface marking 521

Item number: CMC-662-521

TITAN airless nozzle for marking surfaces, symbols, etc.

Spray angle: 50 degrees

Bore: 0.021 inch



Airless nozzle for line markings 215

Item number: CMC-697-215

TITAN airless nozzle for marking sharp lines.

Spray angle: 20 degrees

Bore: 0.015 inch



Airless nozzle for line marking 217

Item number: CMC-697-217

TITAN airless nozzle for marking sharp lines.

Spray angle: 20 degrees

Bore: 0.017 inch



Airless nozzle for line markings 419

Item number: CMC-697-419

TITAN airless nozzle for marking sharp lines.

Spray angle: 40 degrees

Bore: 0.019 inch



Airless nozzle for line markings 421

Item number: CMC-697-421

Titanium airless nozzle for marking sharp lines.

Spray angle: 40 degrees

Bore: 0.021 inch



Airless nozzle for line markings 423

Item number: CMC-697-423

TITAN airless nozzle for marking sharp lines.

Spray angle: 40 degrees

Bore: 0.023 inch

Accessories/Extensions



Airless nozzle for line markings 621

Item number: CMC-697-621

TITAN airless nozzle for marking sharp lines.

Spray angle: 60 degrees

Bore: 0.021 inch



Airless nozzle for line markings 627

Item number: CMC-697-627

TITAN airless nozzle for marking sharp lines.

Spray angle: 60 degrees

Bore: 0.027 inch



Airless nozzle for line marking 631

Item number: CMC-697-631

TITAN airless nozzle for marking sharp lines.

Spray angle: 60 degrees

Bore: 0.031 inch



Bottle of 250 ml of lubricating oil

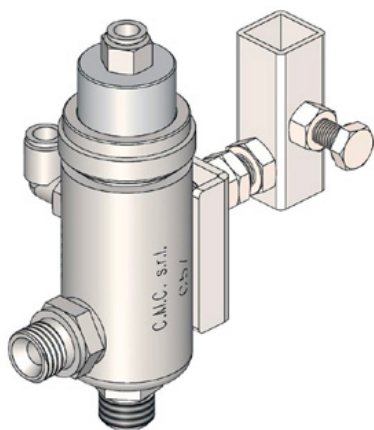
Item number: CMC-BIO46

Fluido Bio 46

Suitable for CMC piston pumps.

The special oil prevents premature wear on the pump.

Accessories/Extensions



Automatic airless gun - Model C57

Item number: CMC-C57

C57 automatic airless gun

The gun opens and closes by means of pneumatic control.



Manual Paint gun C94 including 10 m Hose

Item number: CMC-C94+10H

In order to also be able to carry out area markings over greater distances.



Manual Paint gun Short C94 including 10 m Hose and Extension

Item number: CMC-C94+P+10H

In order to also be able to carry out area markings over greater distances.

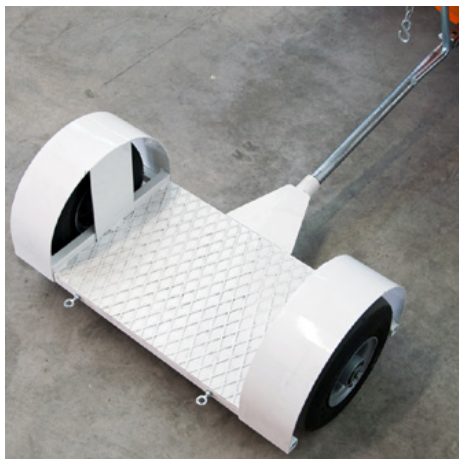
Including 45 cm nozzle extension



Nozzle extension 45 cm

Item number: CMC-C94-017

Nozzle extension 45 cm long for easy application of surfaces or even symbols.



Trailer with standing driver

Item number: CMC-CRPROP

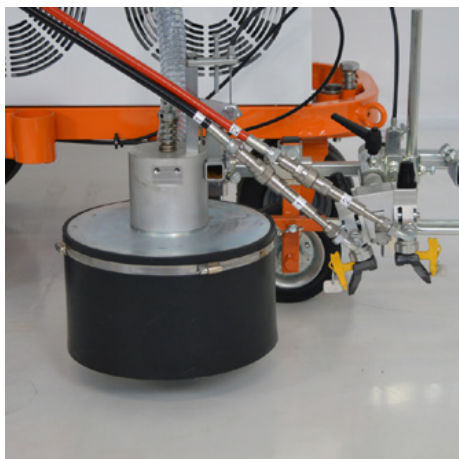
Trailer for standing driver - hitchable to CMC machines with hydraulic drive.
Foldable with a chain system.



Glas bead system with pressurized tank 15,5 l and glass bead gun

Item number: CMC-DISPERL254050

Glass bead system consisting of:
Pressure tank for glass beads with a capacity of 15.5 liters.
Glass bead gun for the safe and easy insertion of glass beads into the marking paint.



Glass beads system with conical glass beads spreader

Item number: CMC-DISPERLAR30-CON

Gravity glass bead scattering system with special outlet system.

This prevents the reflex glass beads from blowing away due to the apron and thus reduces the amount of material used.



Electronic spacing device C8000

Item number: CMC-EL00032

C8000 Line Gap Automatic:
CMC line gap machine for CMC marking machines.
See also the products of RMCD - Road Marking Control Device.

Accessories/Extensions



Electronic spacing device with pump stroke measurement C9000

Item number: CMC-EL00039

C9000 - Line Gap Machine

CMC line gap automat with pump stroke measurement for CMC marking machines.

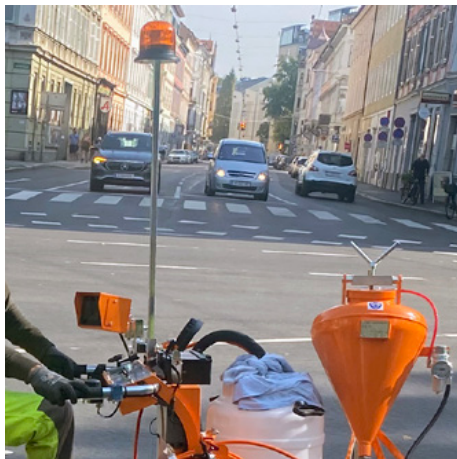
See also the products of RMCD - Road Marking Control Device.



Headlight / working light

Item number: CMC-FRDIPR

Suitable for HMC and a wide variety of marking devices.



Yellow rotating beacon

Item number: CMC-FRRTG

Yellow rotating light / warning light for your marking machine.



Kit for Online-System

Item number: CMC-KITONLINE

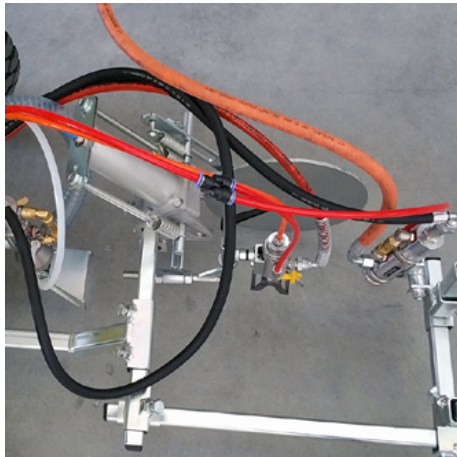
Accessories/Extensions



50 liter plastic paint tank

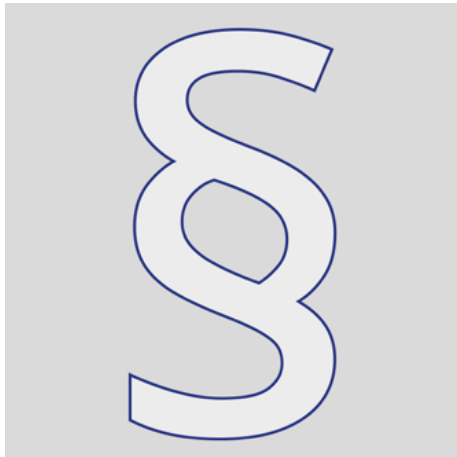
Item number: CMC-PL00199

For the extended performance kit of your marking works.
50 liter paint tank for your CMC marking machine.
Made of plastic with lid.



pneumatic support for paint gun (one disc)

Item number: CMC-SPSK84CN



Additional information

Item number: STR_zz_§

Any prices quoted are valid for 2 months from the date of issue.
Prices are net prices. Delivery ex works (Incoterm - EXW)
We assume no liability for the topicality, correctness and completeness of the information.

Our general terms and conditions apply!

https://shop.stramat.com/data/dokumente/AGB_de.pdf
