

CMC AR 100 G - Airless road marking machine with hydraulic drive - 2 Wheels in front



Item number:
CMC-MTLAR100-G

Length:
185 cm

Width:
75 cm

Height:
160 cm

Weight:
540 kg

Created on 01.01.2025



Description

Self-propelled airless road marking machine with hydraulic drive. Ideal for marking municipalities and cities or even larger parking lots. The machine can also be equipped with spray plastic systems. Two front wheels, one steerable rear wheel.

Petrol engine:

- Power 16 HP
- Electric starter
- Alternator for charging the battery
- Centrifugal disk

Hydraulic drive with:

- 2 motors directly on front wheels
- Joystick control: steers forwards, backwards and neutral
- VARIABLE-FLOW PUMP: guarantees more safety for the driver and better performance. Enables marking even on steep roads.

Rear wheel with 3 adjustment options:

fixed, semi-fixed with spring support, free - to mark radii.

Description

It can be locked or unlocked during work by 2 pneumatic controls on the dashboard.

Line/gap automat:

- C9000 with pump stroke measurement or

RMCD - Road Marking Control Device

Probably the easiest to operate system for road marking!

With high-resolution color display and the unique RMCD-Drive!

See our YouTube videos and the link to the RMCD website.

Telescopic pointer for simple initial marking or precise re-marking of existing lines.

Engine shut-off device when the driver lets go of the handlebars.

Holder for paint bucket

Airless piston pump

- max. vol. flow rate 6.17 l / min

Pulsation damper

Single-stage single-cylinder compressor:

- Flow rate 394 l / min

- with pressure relief valve

Automatic gun. Mounted on a fixed L-profile, height-adjustable.

Standard nozzle for 10 - 20 cm line. (Line width can be adjusted from 5 cm to 30 cm by changing the nozzle and/or adjusting the gun height)

High pressure color filter

MAX. LINE WIDTH: 50 cm

(Only possible with matching accessories)

Spare parts



Paint guns Plug-in filter 100 mesh (yellow)

Item number: BER-2004

Paint gun plug-in filter 100 mesh (yellow).
For filtering the marking paint in the paint spray gun.
Ideal for polyurethane paints.



Suction Filter 28 x 1,5 IG 60 Mesh

Item number: BER-22906

Suction filter 28 x 1.5 IG 60 mesh.
Suction filter short. Reinforced version.



Paint guns Plug-in filter 50 mesh (white)

Item number: BER-FM2002

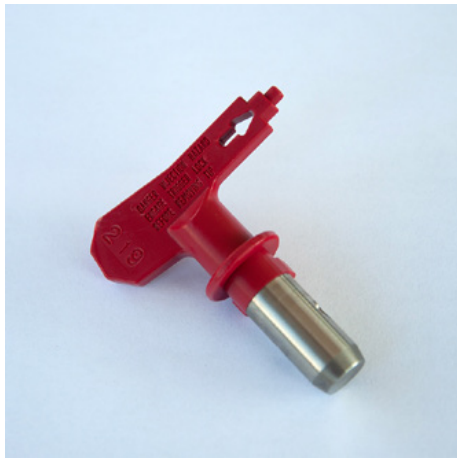
Paint spray gun insert filter 50 mesh (white).
For filtering your marking paint in the paint spray gun.



Airless nozzle for surface markings 219

Item number: CMC-662-219

TITAN airless nozzle for marking surfaces, symbols, etc.
Spray angle: 20 degrees
Bore: 0.019 inch



Airless nozzle for surface marking 421

Item number: CMC-662-421

TITAN airless nozzle for marking surfaces, symbols, etc.

Spray angle: 40 degrees

Bore: 0.021 inch



Airless nozzle for surface marking 423

Item number: CMC-662-423

TITAN airless nozzle for marking surfaces, symbols, etc.

Spray angle: 40 degrees

Bore: 0.023 inch



Airless nozzle for surface markings 519

Item number: CMC-662-519

TITAN airless nozzle for marking surfaces, symbols, etc.

Spray angle: 50 degrees

Bore: 0.019 inch



Airless nozzle for surface marking 521

Item number: CMC-662-521

TITAN airless nozzle for marking surfaces, symbols, etc.

Spray angle: 50 degrees

Bore: 0.021 inch

Spare parts



Airless nozzle for line markings 215

Item number: CMC-697-215

TITAN airless nozzle for marking sharp lines.

Spray angle: 20 degrees

Bore: 0.015 inch



Airless nozzle for line marking 217

Item number: CMC-697-217

TITAN airless nozzle for marking sharp lines.

Spray angle: 20 degrees

Bore: 0.017 inch



Airless nozzle for line markings 419

Item number: CMC-697-419

TITAN airless nozzle for marking sharp lines.

Spray angle: 40 degrees

Bore: 0.019 inch



Airless nozzle for line markings 421

Item number: CMC-697-421

Titanium airless nozzle for marking sharp lines.

Spray angle: 40 degrees

Bore: 0.021 inch

Spare parts



Airless nozzle for line markings 423

Item number: CMC-697-423

TITAN airless nozzle for marking sharp lines.

Spray angle: 40 degrees

Bore: 0.023 inch



Airless nozzle for line markings 621

Item number: CMC-697-621

TITAN airless nozzle for marking sharp lines.

Spray angle: 60 degrees

Bore: 0.021 inch



Airless nozzle for line markings 627

Item number: CMC-697-627

TITAN airless nozzle for marking sharp lines.

Spray angle: 60 degrees

Bore: 0.027 inch



Airless nozzle for line marking 631

Item number: CMC-697-631

TITAN airless nozzle for marking sharp lines.

Spray angle: 60 degrees

Bore: 0.031 inch

Spare parts



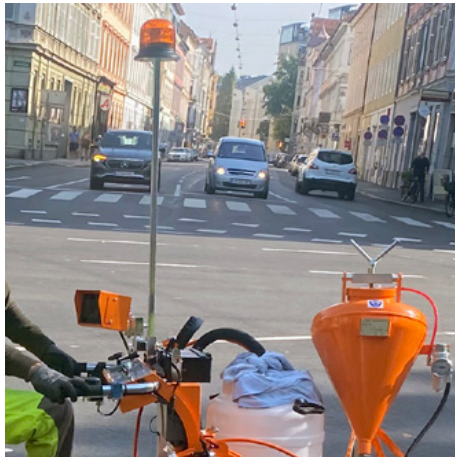
Bottle of 250 ml of lubricating oil

Item number: CMC-BIO46

Fluido Bio 46

Suitable for CMC piston pumps.

The special oil prevents premature wear on the pump.



Yellow rotating beacon

Item number: CMC-FRRTG

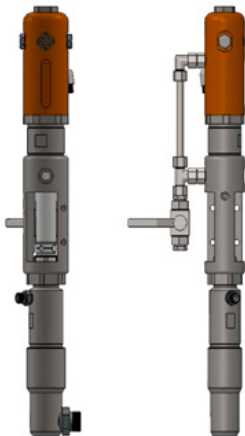
Yellow rotating light / warning light for your marking machine.



Pneumatic cylinder for marking unit

Item number: CMC-GD05

suitable for CMC marking machine



CMC P20 Airless Pump

Item number: CMC-P20

Suitable for CMC airless pump P20.

Spare parts

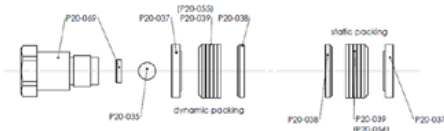


Packing to CMC Airlesspump P20.

Item number: CMC-P20-039

Gasket set color gaskets

Item number: CMC-P20-092



Pressure regulator 1/4 inch for color or pressure system

Item number: CMC-PN00064

For switching from the backwash function to the marking function.



Pickup wheel for encoder

Item number: CMC-SU00031

For switching from the backwash function to the marking function.

Spare parts



High pressure color filter 60 Mesh

Item number: CMC-VE00062

suitable for CMC marking machine

Length: 145 mm

diameter 25 mm



High pressure paint filter 30 mesh

Item number: CMC-VE00110

suitable for CMC marking machine

Length: 145 mm

Diameter: 25 mm

Kein Bild verfügbar!

Bitte beachten Sie die Dokumente unter Downloads / Pdf Docs

No picture available!

Please have a look for the documents you will find under Downloads / Pdf Docs

Second automatic glass bead gun with independent delay regulator

Item number: CMC-2PP



Airless nozzle for surface markings 219

Item number: CMC-662-219

TITAN airless nozzle for marking surfaces, symbols, etc.

Spray angle: 20 degrees

Bore: 0.019 inch



Airless nozzle for surface marking 421

Item number: CMC-662-421

TITAN airless nozzle for marking surfaces, symbols, etc.

Spray angle: 40 degrees

Bore: 0.021 inch



Airless nozzle for surface marking 423

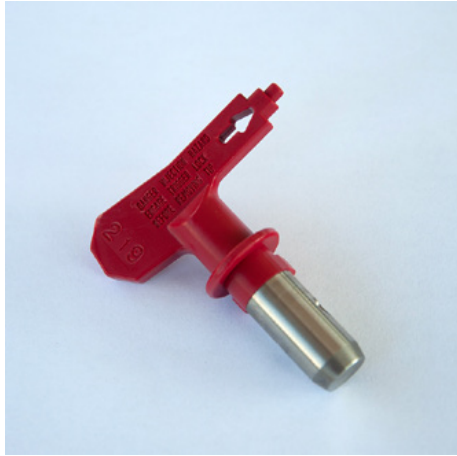
Item number: CMC-662-423

TITAN airless nozzle for marking surfaces, symbols, etc.

Spray angle: 40 degrees

Bore: 0.023 inch

Accessories/Extensions



Airless nozzle for surface markings 519

Item number: CMC-662-519

TITAN airless nozzle for marking surfaces, symbols, etc.

Spray angle: 50 degrees

Bore: 0.019 inch



Airless nozzle for surface marking 521

Item number: CMC-662-521

TITAN airless nozzle for marking surfaces, symbols, etc.

Spray angle: 50 degrees

Bore: 0.021 inch



Airless nozzle for line markings 215

Item number: CMC-697-215

TITAN airless nozzle for marking sharp lines.

Spray angle: 20 degrees

Bore: 0.015 inch



Airless nozzle for line marking 217

Item number: CMC-697-217

TITAN airless nozzle for marking sharp lines.

Spray angle: 20 degrees

Bore: 0.017 inch



Airless nozzle for line markings 419

Item number: CMC-697-419

TITAN airless nozzle for marking sharp lines.

Spray angle: 40 degrees

Bore: 0.019 inch



Airless nozzle for line markings 421

Item number: CMC-697-421

Titanium airless nozzle for marking sharp lines.

Spray angle: 40 degrees

Bore: 0.021 inch



Airless nozzle for line markings 423

Item number: CMC-697-423

TITAN airless nozzle for marking sharp lines.

Spray angle: 40 degrees

Bore: 0.023 inch



Airless nozzle for line markings 621

Item number: CMC-697-621

TITAN airless nozzle for marking sharp lines.

Spray angle: 60 degrees

Bore: 0.021 inch

Accessories/Extensions



Airless nozzle for line markings 627

Item number: CMC-697-627

TITAN airless nozzle for marking sharp lines.

Spray angle: 60 degrees

Bore: 0.027 inch



Airless nozzle for line marking 631

Item number: CMC-697-631

TITAN airless nozzle for marking sharp lines.

Spray angle: 60 degrees

Bore: 0.031 inch



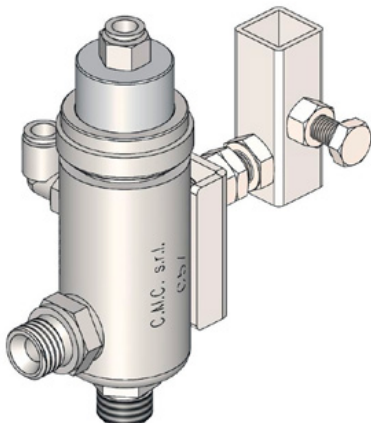
Bottle of 250 ml of lubricating oil

Item number: CMC-BIO46

Fluido Bio 46

Suitable for CMC piston pumps.

The special oil prevents premature wear on the pump.



Automatic airless gun - Model C57

Item number: CMC-C57

C57 automatic airless gun

The gun opens and closes by means of pneumatic control.

Accessories/Extensions



Manual Paint gun C94 including 10 m Hose

Item number: CMC-C94+10H

In order to also be able to carry out area markings over greater distances.

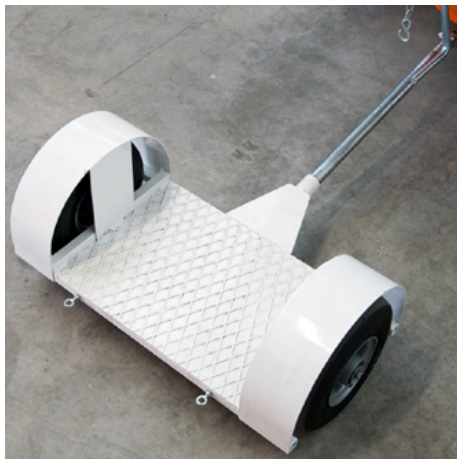


Manual Paint gun Short C94 including 10 m Hose and Extension

Item number: CMC-C94+P+10H

In order to also be able to carry out area markings over greater distances.

Including 45 cm nozzle extension



Trailer with standing driver

Item number: CMC-CRPROP

Trailer for standing driver - hitchable to CMC machines with hydraulic drive.

Foldable with a chain system.



Trailer with driving seat

Item number: CMC-CRSED

Trailer with seat - can be coupled to CMC machines with hydraulic drive.

Accessories/Extensions

Kein Bild verfügbar!

Bitte beachten Sie die Dokumente unter Downloads / Pdf Docs

No picture available!

Please have a look for the documents you will find under Downloads / Pdf Docs

Glass-Beads-System with 38,5 Liter with conic tank

Item number: CMC-DISPERL120

Glass bead system 38.5 liters with conical pressure tank and gun.



Glass-Bead-System with 20 Liter with conic tank

Item number: CMC-DISPERL90

Glass bead system 20 liters with conical pressure tank and gun.



Headlight / working light

Item number: CMC-FRDIPR

Suitable for HMC and a wide variety of marking devices.

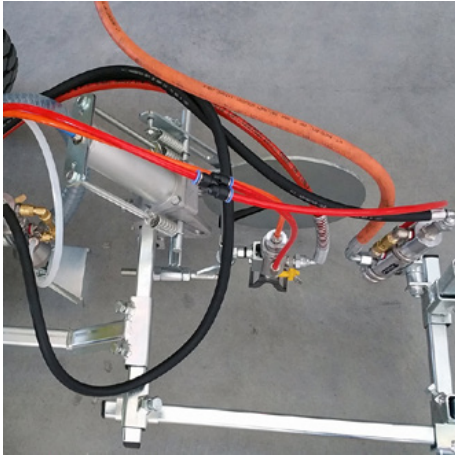


Yellow rotating beacon

Item number: CMC-FRRTG

Yellow rotating light / warning light for your marking machine.

Accessories/Extensions



pneumatic support for paint gun (one disc)

Item number: CMC-SPSK84CN



Additional information

Item number: STR_zz_§

Any prices quoted are valid for 2 months from the date of issue.
Prices are net prices. Delivery ex works (Incoterm - EXW)
We assume no liability for the topicality, correctness and completeness of the information.

Our general terms and conditions apply!

https://shop.stramat.com/data/dokumente/AGB_de.pdf